

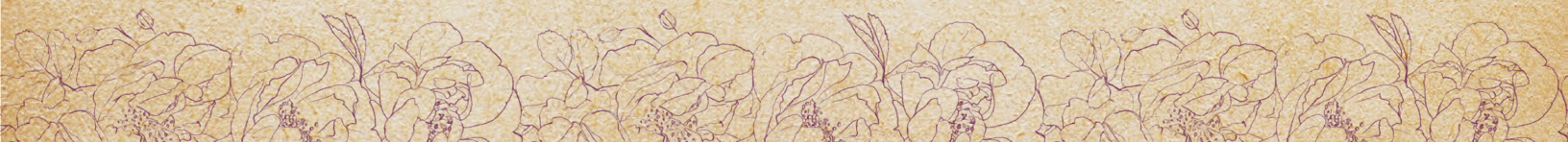


White Christmas

PEGGY BODICE EXPANSION

A PATREON EXCLUSIVE PATTERN

© 2023 Charm Patterns by Gertie



This dress has been on Team Charm's pattern wishlist for years!

Designed by Edith Head and worn by Rosemary Clooney in the movie *White Christmas*, the inspiration dress is a green velvet wonder, with a full overskirt belted over a slim pencil skirt.

Our version calls for a full circle skirt and modified sweetheart neckline, hacked off of the Peggy Bodice, and a lining instead of the neckline facings. Full details of how we created this dress can be found in the Winter 2023 issue of *Vintage by Gertie* magazine, but we wanted to share this pattern hack with you as a gift!

xoxo, Gertie



Fabric Notes

The fabrics recommended in the Peggy Bodice instructions will work for this dress, but of course, we recommend a dark green woven velveteen with green silk charmeuse for the neckline straps. We lined ours in a black cotton lawn, but any lining fabric would work.

Materials & Notions

- Fabric for the bodice and skirt
- Fabric for the neckline straps
- Lining fabric for the bodice (and skirt, if desired)
- 14-inch regular zipper
- All other supplies from the Peggy Bodice instructions and skirt pattern instructions

Resources

Here are some of the fabrics I used for the sample. There are lots of places to purchase fabric, so this is solely a guide you can use as a reference:

[Green Velveteen](#)

[Green Silk Charmeuse](#)

Fit Notes

The White Christmas Dress has the same fit and silhouette as the Peggy Bodice with a Charm Circle Skirt.

Use the Finished Measurements Chart from the original Peggy Bodice pattern for bodice measurements and ease information, and the original Charm Circle Skirt pattern (or any Lamour-series skirt pattern of your choice) for skirt measurements.

PATTERN PIECES NEEDED

Use the Bodice Front and Bodice Back of the White Christmas Peggy Bodice Expansion, as well as all other pattern pieces from the original Peggy Bodice except for the Front Neck Facing (5) and Back Neck Facing (6). You'll also need the pattern pieces for your chosen skirt pattern, excluding the waistband or waist facings.

For the bodice, follow the pattern piece cutting instructions below:

- 1. Bodice Front (White Christmas Expansion)**
Cut 1 fabric on fold, 1 lining on fold
- 2. Bodice Back (White Christmas Expansion)**
Cut 2 fabric, 2 lining
- 3. Midriff Front (Peggy Bodice)**
Cut 1 fabric on fold, 1 lining on fold
- 4. Midriff Back (Peggy Bodice)**
Cut 2 fabric, 2 lining on fold
- 5. Front Neck Facing (Peggy Bodice)**
Do not use
- 6. Back Neck Facing (Peggy Bodice)**
Do not use
- 7. Front Underarm Gusset (Peggy Bodice)**
Cut 2 fabric, 2 lining
- 8. Back Underarm Gusset (Peggy Bodice)**
Cut 2 fabric, 2 lining

SEWING INSTRUCTIONS

NOTES

- 5/8-in (1.5 cm) seam allowances are included on all pattern pieces, except where otherwise noted.
- Follow the original Peggy Bodice instructions to mark your fabric and apply interfacing. The bodice seams will be fully enclosed, so only skirt seam finishing will be necessary.
- Do not iron velvet! Instead, hover your iron over the surface and steam the fabric, finger-pressing as needed.

SEW THE DRESS

Bodice

Follow the Peggy Bodice instructions and complete Step 1 (Staystitch neckline) through Step 6 (Sew bodice back to midriff) of the Bodice section, then continue below

1. Sew shoulder and sleeve seam: staystitch the Bodice Front (1) shoulder from the neckline to the upper sleeve notch, using a 1/2-in (1.3 cm) seam allowance. Clip into the seam allowance every 1/2 in. Pin bodice front to Bodice Back (2) at upper sleeve seam, right sides (RS) together, matching notches and easing the bodice front as needed. Stitch. Press seam allowances open. **NOTE:** some sizes will require more clipping and easing than others.

Neckline Bias Tubes

We decided to highlight the front neckline detail only; however, the original dress worn by Rosemary Clooney in the movie has this same detail repeated at the back neckline. To mimic the original, double the length of bias tubing and alter the following instructions accordingly. For an easier option, you can use green cording or velvet ribbon.

1. Cut fabric for bias tubes: measure the distance between the circle and the shoulder seam of your bodice front. Add 3 in (7.6 cm) to that measurement and cut two lengths of fabric on the bias measuring that length by 1 3/4 in (4.4 cm) wide.

2. Sew the bias tubes: pin each bias tube in half lengthwise, RS together. Stitch with a 5/8-in (1.5 cm) seam allowance, leaving both short edges unsewn.

Trim seam allowances carefully to 1/8 in (3 mm), or even less. Turn RS out, very carefully. **NOTE:** because they are so narrow, it is necessary to use a fabric tube turner to turn the bias tubes RS out.

3. Attach bias tubes at the front neckline: pin one end of a bias tube to the bodice front circle, RS together, aligning raw edges. Baste in place to secure. Repeat for the other bias tube.

Lining

Repeat all Bodice section steps for the lining pieces, then continue below.

1. Prepare to attach lining with clean finish

method: pin lining to outer bodice around neckline, RS together, sandwiching bias tubes inside. At zipper opening's top edge, working with bodice back lining up, fold seam allowances as follows: on right half of opening (the underlap), fold both seam allowances 1/2 in (1.3 cm) to lining's wrong side (WS). The lining seam allowance nests inside the outer fabric seam allowance. On opening's left half (the overlap), fold lining seam allowance 7/8 in (2.2 cm) to WS. Fold outer fabric seam allowance 5/8 in (1.5 cm) to WS. The seam allowances nest inside each other with a 1/4-in (6 mm) gap between the two.

2. Sew lining to bodice neckline: stitch around the neckline, starting at one folded edge and ending at the other folded edge. Break your stitches by backstitching at each side of the shoulder seam, leaving a gap of 1/4 in (6 mm). Pivot exactly at the center front (CF). Clip into the CF seam allowance. Grade seam allowances so those on the bodice are widest and those on the lining are narrowest. Clip into curves every 1/2 in (1.3 cm).

3. Attach bias tubing: turn bodice to RS. Thread the free end of each bias tube through the gap at the shoulder seam, making sure the tubes cross at CF. Try on the bodice and adjust the length of the bias tube: you will want it taut to help hold the shoulder into place. Pin to secure with the bias tubing sandwiched between the fabric and the lining exactly at the shoulder seam. Turn the bodice WS out, and stitch across the shoulder seam to secure the bias tubing. Trim any excess tubing if necessary.

4. Understitch neckline: with lining opened out and seam allowances underneath, stitch along lining RS 1/8 in (3 mm) from the seamline, catching seam allowances in stitching. Press lining to inside of bodice, rolling seamline slightly to WS so it is hidden.

5. Stitch sleeve hem: turn lining back to bodice RS. Pin lining sleeve hem to bodice sleeve hem, RS together, matching notches and shoulder seams. Stitch each sleeve hem. Grade seam allowances so those on the bodice are wider.

6. Turn lining to WS: turn the bodice RS out by reaching through each front shoulder and pulling bodice backs through.

7. Understitch sleeve hem: understitch each sleeve hem as for neckline. Press sleeve hem edge, rolling seamline to WS.

8. Sew underarm and side seams: pin bodice front unit to bodice back unit at side seam and underarm sleeve seam, RS together, matching notches, gusset seams, and midriff seam. Starting at the bodice waistline and ending at the lining waistline, stitch underarm and side seams in one pass. Reinforce underarm seam by stitching within the seam allowance 1/8 in (3 mm) from seamline. Press seam allowances

open. Turn bodice to RS. Press lining waistline edge 5/8 in (1.5 cm) to WS.

Garment Assembly and Zipper

Follow the instructions on your chosen Lamour-series pattern to sew the skirt, without a waistband or waist facing. Line the skirt (if desired) and baste the skirt lining to the skirt fabric at the waistline.

1. Sew bodice to skirt: pin bodice to skirt, RS together, matching seams and keeping bodice lining free. Stitch. Grade seam allowances so bodice's is widest. Clip into waistline seam allowance every 1/2 in (1.3 cm) at the curviest part of the waist. Press seam allowances towards bodice.

2. Insert zipper: follow the instructions of your chosen skirt pattern to insert a lapped zipper. Finish the hem according to the skirt instructions.

3. Attach lining to zipper: turn under seam allowances of lining at zipper opening and pin to zipper tape, tucking in upper ends of zipper tape and enclosing between lining and dress. Slipstitch in place by hand.

Enjoy your festive new White Christmas Dress!

PATTERN PIECE LOCATION GUIDE

Here is a list to help you locate the pattern pieces on the letter-size tiled pages and AO pattern sheets. The tiled pieces and AO sheets are included as separate pdf files as part of this digital pattern.

SIZES 2-20

PC#	Piece Name	Tiled	AO
1	Bodice Front, A Cup	3-5, 9-10	2
1	Bodice Front, B/C Cup	11-12, 16-18	1
1	Bodice Front, D/DD Cup	13-15, 19-20	2
1	Bodice Front, F/G Cup	21-23, 26-28	1
1	Bodice Front, H Cup	23-25, 28-30	1
2	Bodice Back	1-3, 6-8	1

SIZES 18-34

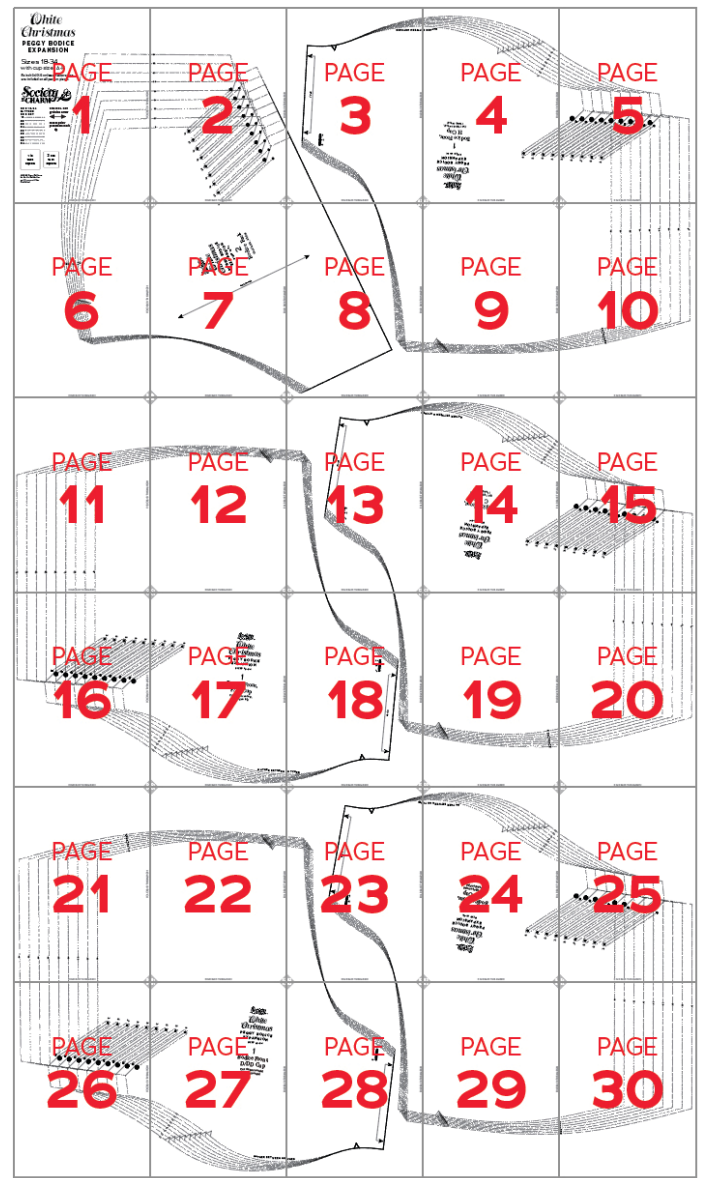
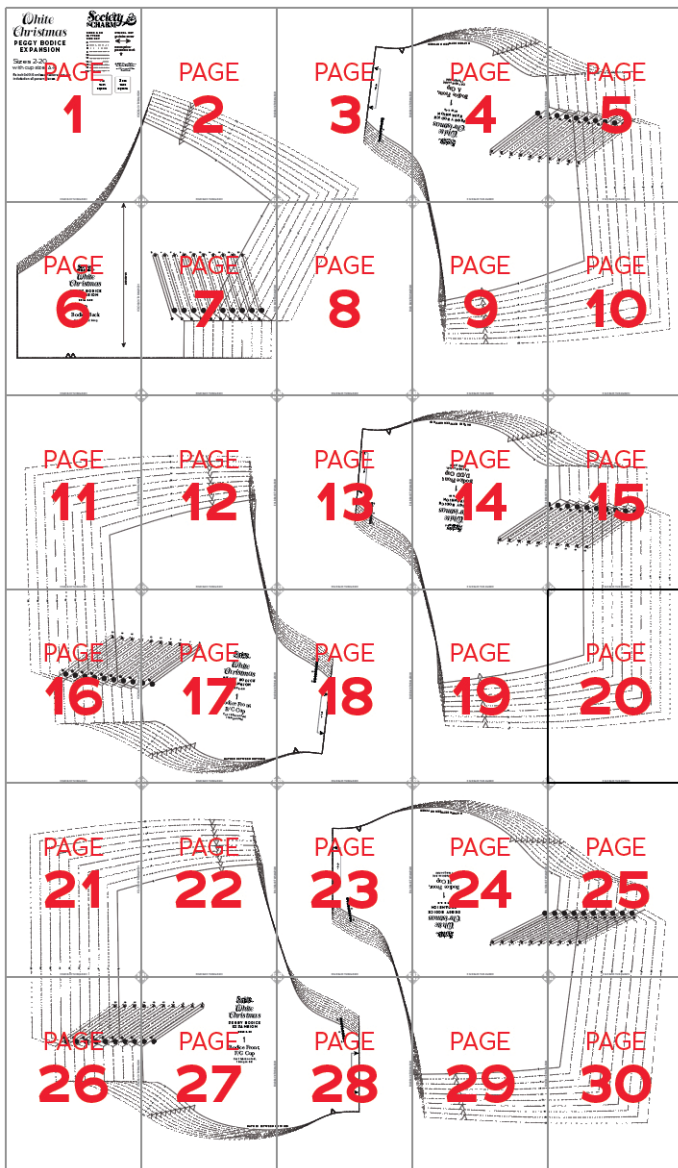
PC#	Piece Name	Tiled	AO
1	Bodice Front, A/B Cup	23-25, 28-30	2
1	Bodice Front, C Cup	13-15, 18-20	2
1	Bodice Front, D/DD Cup	21-23, 26-18	1
1	Bodice Front, F/G Cup	11-13, 16-18	2
1	Bodice Front, H Cup	3-5, 8-10	1
2	Bodice Back	1-3, 6-8	1



TILING MAPS

Sizes 2-20

Sizes 18-34



HOW TO USE THIS PATTERN

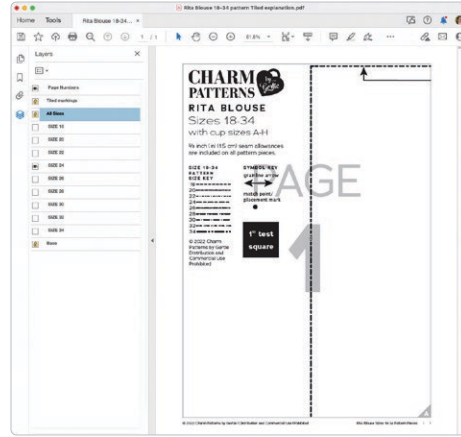
The pattern pieces are tiled so you can print them on Letter (8½" x 11") or A4 size paper. You can also send the A0 pattern sheet PDF to a local or online printer (like ThePlottedPattern.com) to print on large sheets (36" x 48" for U.S. or A0 for international).

This pattern includes size layers. To get the best results, open either the Tiled or A0 pattern pieces PDF in [Acrobat Reader](#).

Open the Layers Palette (View>Show/Hide>Navigation Panes>Layers) and hide all of the layer(s) except for the ones you want to print by clicking on the eye icon.

The All Sizes and Tiled Markings layers have general pattern information and will always print.

You may choose to turn off the Page Numbers layer. The page numbers will still appear at the bottom of each page in the footer.



WORKING WITH THE TILED PIECES

Go to File>Print and change the page range to the pages you need for the pieces you've chosen (see Pattern Pieces Printing Index). Make sure the Page Sizing settings to 100% or Actual Size. Test this after printing by measuring the 1" test box on the first page of the pattern pieces.

Cut apart any pattern pieces that share a page, then fold back or cut off the page margins on each page as marked.

Match the letters in the gray corner diamonds. Tape the pages together, butting up the folded or cut page edges with the gray margin lines.

MORE FROM GERTIE

[At CharmPatterns.com](http://CharmPatterns.com): Shop my sewing patterns and accessories.

[On YouTube](#): Learn beginner and advanced sewing skills and techniques through my tutorials and watch episodes of my Gertie's World series.

[On Instagram](#): Stay in the loop and get inspired.

[On Patreon](#): Access monthly patterns and tutorial videos.

