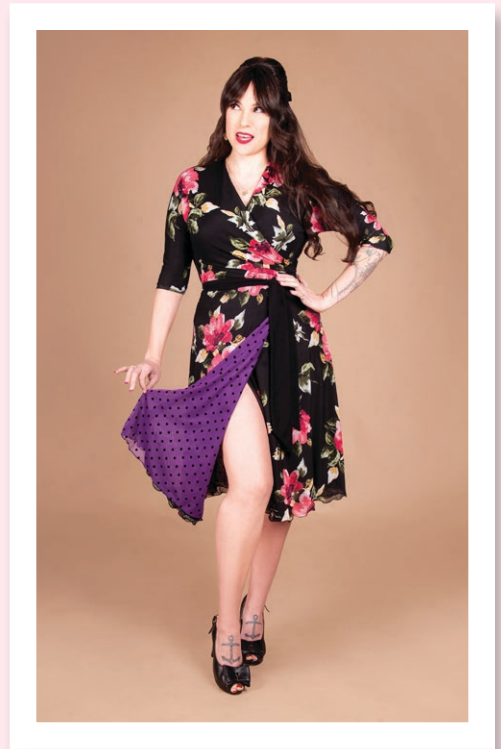




A PATREON EXCLUSIVE BY CHARM PATTERNS



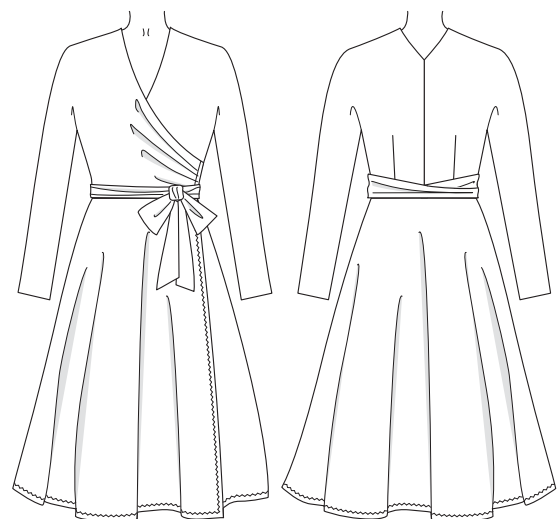
EXTRA CREDIT WRAP SKIRT



A wrap top is lovely, but a wrap dress is even better! The Extra Credit Wrap Skirt is an extension pattern for the Extra Credit Wrap Top, which you can use to create a classic wrap knit dress.

This pattern is designed to be paired with the Extra Credit Wrap Top; however, creative Charm School students could add an interfaced waistband and ties instead to create a separate wrap skirt!

xoxo, Gertie



SIZE CHART

The Extra Credit Wrap Skirt expansion is sized in women's US 2–20 and 18–34 sizes. Please use the Extra Credit Wrap Top size chart and the chart below to pick your size. Take the Waist measurement at the smallest part of your torso and the Hip measurement at the widest part of your hips.

Not sure which size range to choose? Learn more about our [two size ranges here!](#)



Sizes

2-20	2	4	6	8	10	12	14	16	18	20
High Bust	29 in 73.7 cm	31 in 78.7 cm	33 in 83.8 cm	35 in 88.9 cm	37 in 94 cm	39 in 99 cm	41 in 104.1 cm	43 in 109.2 cm	45 in 114.3 cm	47 in 119.4 cm
Bust A cup	30.5 in 77.5 cm	32.5 in 82.5 cm	34.5 in 87.6 cm	36.5 in 92.7 cm	38.5 in 97.8 cm	40.5 in 102.9 cm	42.5 in 108 cm	44.5 in 113 cm	46.5 in 118.1 cm	48.5 in 123.2 cm
Bust B/C cup	31 in 78.7 cm	33 in 83.8 cm	35 in 88.9 cm	37 in 94 cm	39 in 99 cm	41 in 104.1 cm	43 in 109.2 cm	45 in 114.3 cm	47 in 119.4 cm	49 in 124.5 cm
Bust D/DD cup	32 in 81.3 cm	34 in 86.4 cm	36 in 91.4 cm	38 in 96.5 cm	40 in 101.6 cm	42 in 106.7 cm	44 in 111.8 cm	46 in 116.8 cm	48 in 121.9 cm	50 in 127 cm
Bust F/G cup	33 in 83.8 cm	35 in 88.9 cm	37 in 94 cm	39 in 99 cm	41 in 104.1 cm	43 in 109.2 cm	45 in 114.3 cm	47 in 119.4 cm	49 in 124.5 cm	51 in 129.5 cm
Bust H cup	34 in 86.4 cm	36 in 91.4 cm	38 in 96.5 cm	40 in 101.6 cm	42 in 106.7 cm	44 in 111.8 cm	46 in 116.8 cm	48 in 121.9 cm	50 in 127 cm	52 in 132.1 cm
Waist	24 in 61 cm	26 in 66 cm	28 in 71.1 cm	30 in 76.2 cm	32 in 81.3 cm	34 in 86.4 cm	36 in 91.4 cm	38 in 96.5 cm	40 in 101.6 cm	42 in 106.7 cm
Hips	36 in 91.4 cm	38 in 96.5 cm	40 in 101.6 cm	42 in 106.7 cm	44 in 111.8 cm	46 in 116.8 cm	48 in 121.9 cm	50 in 127 cm	52 in 132.1 cm	54 in 137.2 cm

Sizes

18-34	18	20	22	24	26	28	30	32	34
High Bust	39.5 in 100.3 cm	41.5 in 105.4 cm	43.5 in 110.5 cm	45.5 in 115.6 cm	47.5 in 120.7 cm	49.5 in 125.7 cm	51.5 in 130.8 cm	53.5 in 135.9 cm	55.5 in 141 cm
Bust A/B cup	42.5 in 108 cm	44.5 in 113 cm	46.5 in 118.1 cm	48.5 in 123.2 cm	50.5 in 128.3 cm	52.5 in 133.4 cm	54.5 in 138.4 cm	56.5 in 143.5 cm	58.5 in 148.6 cm
Bust C cup	43 in 109.2 cm	45 in 114.3 cm	47 in 119.4 cm	49 in 124.5 cm	51 in 129.5 cm	53 in 134.6 cm	55 in 139.7 cm	57 in 144.8 cm	59 in 149.9 cm
Bust D/DD cup	44 in 111.8 cm	46 in 116.8 cm	48 in 121.9 cm	50 in 127 cm	52 in 132.1 cm	54 in 137.2 cm	56 in 142.2 cm	58 in 147.3 cm	60 in 152.4 cm
Bust F/G cup	45 in 114.3 cm	47 in 119.4 cm	49 in 124.5 cm	51 in 129.5 cm	53 in 134.6 cm	55 in 139.7 cm	57 in 144.8 cm	59 in 149.9 cm	61 in 154.9 cm
Bust H cup	46 in 116.8 cm	48 in 121.9 cm	50 in 127 cm	52 in 132.1 cm	54 in 137.2 cm	56 in 142.2 cm	58 in 147.3 cm	60 in 152.4 cm	62 in 157.5 cm
Waist	40 in 101.6 cm	42 in 106.7 cm	44 in 111.8 cm	46 in 116.8 cm	48 in 121.9 cm	50 in 127 cm	52 in 132.1 cm	54 in 137.2 cm	56 in 142.2 cm
Hips	48 in 121.9 cm	50 in 127 cm	52 in 132.1 cm	54 in 137.2 cm	56 in 142.2 cm	58 in 147.3 cm	60 in 152.4 cm	62 in 157.5 cm	64 in 162.6 cm



Pick the right level for you

The Extra Credit Wrap Skirt is an expansion pattern for the Extra Credit Wrap Top used to create a dress.

BEGINNER

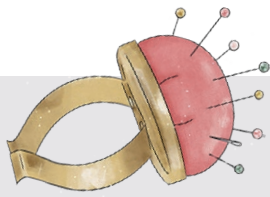
Follow the written instructions along with the companion video to create a dress. For an added challenge, sew the bodice lining in the same fabric as the dress, but be sure to label your pattern pieces well.

INTERMEDIATE

Sew the wrap dress following the instructions and/or video, using a twin needle for a professional-looking hem. For an added challenge, extend the skirt pattern pieces to create a floor-length gown.

ADVANCED

Make the wrap dress reversible by cutting an additional two skirt fronts and one skirt back out of contrast fabric for the lining. Stitch the skirt fabric to the skirt lining right sides (RS) together along the sides seams and hem, turn RS out, and attach to the top at the waist. Finish the dress nicely at the waist by slipstitching the skirt lining to the top lining by hand. For an alternative look, hem the skirt and lining separately and use a lettuce hem finish.



FABRIC NOTES

We recommend light-to medium-weight 4-way stretch knit fabrics with 70–75% stretch. Spandex blends work well in wool, cotton, rayon, or polyester.

If using stretch velvet, sequins, or similar for the main fabric, choose a lining like jersey that is softer next to the skin.

If using a fabric with more or less stretch, you may need to adjust the fit of the pattern (stretchier fabrics will result in a looser fit and vice versa).

MATERIALS & NOTIONS

- Fabric for the dress
- Thread to match

RESOURCES

Here are some of the fabrics we used for the samples. There are lots of places to purchase fabric, so this is solely a guide you can use as a reference:

[ITY Knit Jersey](#)

[Flocked Dot Mesh](#)
underlined with [Black](#)

[Sheer Mesh](#)

[Floral Mesh](#)

PATTERN PIECES

1. Skirt Front

Cut 2 fabric

2. Skirt Back

Cut 1 fabric on fold

FIT NOTES

The Extra Credit Wrap Skirt is an A-line wrap skirt extension for the Extra Credit Wrap Top to create a dress. Follow the bust and waist measurements for the Extra Credit Wrap Top pattern. The dress is designed to fit with negative ease in the bust, waist, and hips. Because of the wrap natural of the garment, the amount of ease is adjustable.

See the charts below for finished garment measurements. The finished measurements are given as if the dress was laid flat, and do not reflect the garment's ease or accurate measurements of the garment when worn. **It is highly recommended that you make a muslin (toile) of the garment to determine the fit for your body.**

FINISHED MEASUREMENTS

Sizes

2-20	2	4	6	8	10	12	14	16	18	20
Waist	33 in 83.8 cm	34.75 in 88.3 cm	36.5 in 92.7 cm	38.25 in 97.2 cm	40 in 101.6 cm	41.75 in 106 cm	43.5 in 110.5 cm	45.25 in 114.9 cm	47 in 119.4 cm	48.75 in 123.8 cm
Hips	40.25 in 102.2 cm	42 in 106.7 cm	43.75 in 111.1 cm	45.5 in 115.6 cm	47.25 in 120 cm	49 in 124.5 cm	50.75 in 128.9 cm	52.5 in 133.4 cm	54.25 in 137.8 cm	56 in 142.2 cm
Sweep - Total	89.5 in 227.3 cm	91.5 in 232.4 cm	93.5 in 237.5 cm	95.5 in 242.6 cm	97.5 in 247.7 cm	99.5 in 252.7 cm	101.5 in 257.8 cm	103.5 in 262.9 cm	105.5 in 268 cm	107.5 in 273.1 cm

Sizes

18-34	18	20	22	24	26	28	30	32	34
Waist	38.5 in 97.8 cm	40.25 in 102.2 cm	42 in 106.7 cm	43.75 in 111.1 cm	45.5 in 115.6 cm	47.25 in 120 cm	49 in 124.5 cm	50.75 in 128.9 cm	52.5 in 133.4 cm
Hips	53 in 134.6 cm	54.75 in 139.1 cm	56.5 in 143.5 cm	58.25 in 148 cm	60 in 152.4 cm	61.75 in 156.8 cm	63.5 in 161.3 cm	65.25 in 165.7 cm	67 in 170.2 cm
Sweep - Total	104 in 264.2 cm	106 in 269.2 cm	108 in 274.3 cm	110 in 279.4 cm	112 in 284.5 cm	114 in 289.6 cm	116 in 294.6 cm	118 in 299.7 cm	120 in 304.8 cm

REQUIRED YARDAGE & CUTTING LAYOUTS

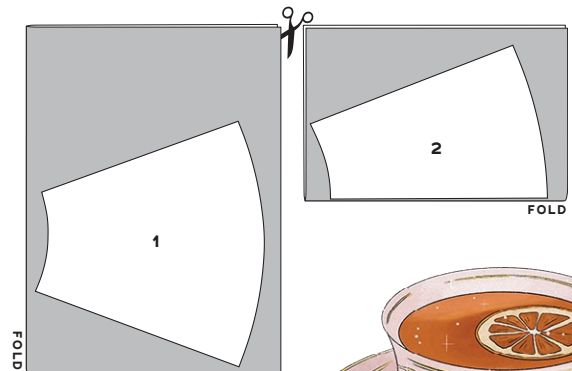
NOTE: All pattern pieces are shown in a “without nap” layout. You may need additional yardage for directional prints, stripes, plaids, and other prints that need to be matched across seamlines.

Skirt, Fabric (1,2)

All sizes	
All widths	2¾ yd 2.5 m

NOTE: First cut piece 1 on a crosswise layout, as shown; open up the full width of the fabric and make a fold perpendicular to the selvages.

Then cut the fabric and fold parallel to the selvages to cut piece 2 on the fold.



SEWING INSTRUCTIONS

BEFORE SEWING

Transferring marks: use dressmaker's tracing paper and a tracing wheel to transfer all pattern markings to the wrong side (WS) of your fabric. Mark pattern notches by snipping into the seam allowance with the tip of your scissors.

Seam Finishing: knits typically do not fray, so seam finishing is not necessary.

NOTES

- 5/8-in (1.5 cm) seam allowances are included on all pattern pieces, except where otherwise noted.
- Use a stretch, ballpoint, or jersey needle to avoid skipped stitches.
- Use a narrow zigzag stitch on seams to provide some stretch (about 2.5 mm wide by 2.5 mm long).
- Press your stitching lines after every step, even when not specified in the instructions. You do not need to press basting or gathering stitches.

SEW THE DRESS

The Extra Credit Wrap Skirt attaches to the Extra

CHARM SCHOOL
SKILL-BUILDING EXERCISE

Using a Twin Needle

A twin needle is an easy way to get a professional-looking hem on knit garments. Follow your sewing machine instructions, if provided, for using a twin needle.

We recommend a twin needle size 4.0/75.

You will need two spools for thread and a separate spool holder (if your machine doesn't have two spool holders). Use a sewing machine needle plate with a wide opening, such as used for a zigzag stitch.

Thread the left needle first and then the right, following the usual threading path for each. Make sure the threads don't get twisted.

Sew as usual, using a straight stitch.

Credit Wrap Top at the waistline. Use the cropped-length cutting line on the Extra Credit Wrap Top and follow the Wrap Top instructions through Step 9 (Sew sleeve hems), then begin here.

BODICE

1. Baste waistline: with WS together, pin top to top lining along waistline edge, matching darts, notches, and side seams. Baste together with a 1/2-in (1.3 cm) seam allowance.

SKIRT

1. Sew side seams: pin Skirt Fronts (1) to Skirt Back (2) at side seams, right sides (RS) together, matching notches. Stitch from waistline edge to hem. Trim seam allowances and press toward the skirt back.

2. Attach skirt to bodice: pin skirt unit to bodice unit along waistline edge, RS together, matching notches, circles, and side seams. Stitch. Trim seam

allowance and press towards bodice.

Return to Step 12 (Finish side seam tie opening) of the Extra Credit Wrap Top instructions, and then enjoy your classic Extra Credit Wrap Dress!

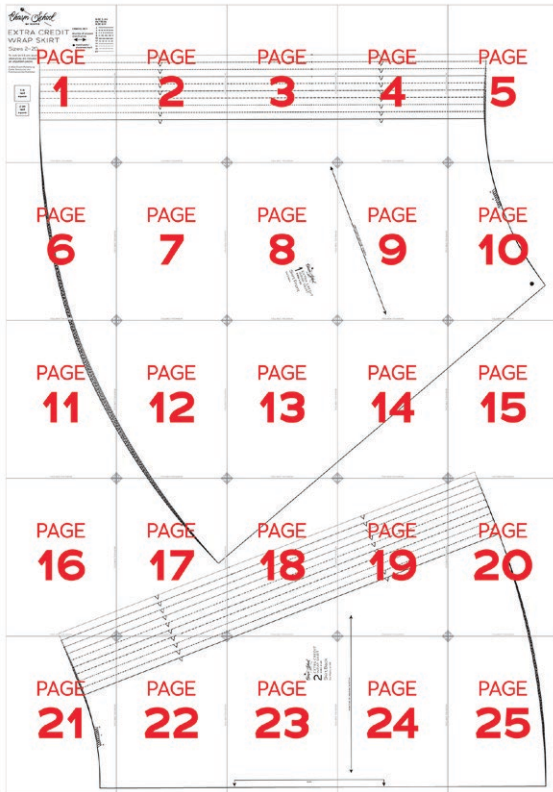
PATTERN PIECE LOCATION GUIDE

Here is a list to help you locate the pattern pieces on the letter-size tiled pages and A0 pattern sheets. The tiled pieces and A0 sheets are included as separate PDF files as part of this digital pattern.

PC#	Piece Name	SIZES 2-20		SIZES 18-34	
		Tiled	A0	Tiled	A0
1	Skirt Front	1-15, 17, 18	1	1-19	1
2	Skirt Back	15-25	1	18-30	2

TILING MAPS

SIZES 2-20



SIZES 18-34



HOW TO USE THIS PATTERN

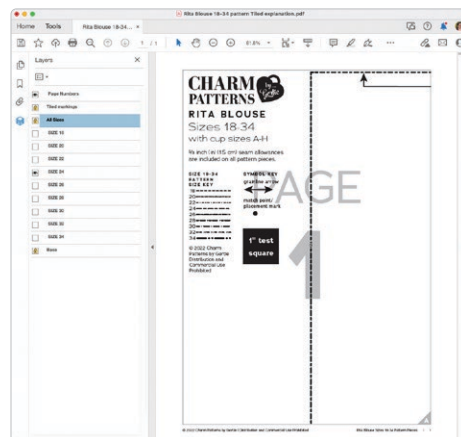
The pattern pieces are tiled so you can print them on Letter (8½ in x 11 in) or A4 size paper. You can also send the A0 pattern sheet PDF to a local or online printer (like ThePlottedPattern.com) to print on large sheets (36 in x 48 in for U.S. or A0 for international).

This pattern includes size layers. To get the best results, open either the Tiled or A0 pattern pieces PDF in [Acrobat Reader](#).

Open the Layers Palette (View>Show/Hide>Navigation Panes>Layers) and hide all of the layer(s) except for the ones you want to print by clicking on the eye icon.

The All Sizes and Tiled Markings layers have general pattern information and will always print.

You may choose to turn off the Page Numbers layer. The page numbers will still appear at the bottom of each page in the footer.



WORKING WITH THE TILED PIECES

Go to File>Print and change the page range to the pages you need for the pieces you've chosen (see Pattern Pieces Printing Index). Make sure the Page Sizing settings to 100% or Actual Size. Test after printing by measuring the 1 inch or 2 cm test box on the first page of the pattern pieces.

Cut apart any pattern pieces that share a page, then fold back or cut off the page margins on each page as marked.

Match the letters in the gray corner diamonds. Tape the pages together, butting up the folded or cut page edges with the gray margin lines.

WELCOME TO



Class is in session!

Charm School is a private and exclusive dressmaking academy where your fantasies are stitched into reality.

Enjoy these benefits as part of your Charm School enrollment. For more access, upgrade now to a higher tier [on Patreon](#).

As you explore the hallowed halls, remember our four tenets: **Education, Community, Glamour, and Mastery**. And never forget the motto that generations before us have pledged: *Setire Phantasia*. **Feel the fantasy!**

STUDENT RESOURCES

- Easily find your homework and patterns using the Patreon archive visual index on our [Patreon page](#).
- Learn which patterns can combine together from our [mix-and-match spreadsheet](#).
- Shop all Charm sewing patterns and accessories in the [Charm shop](#).

On Instagram: Stay in the loop and get inspired by Gertie and other students.

On YouTube: Learn beginner and advanced sewing skills and techniques with comprehensive tutorials.



2024 PATREON TIER COMPARISONS



	Sewing Circle	Glamour Circle	Princess Circle	Inner Circle
2024 Price	\$9	\$12	\$20	\$25
Monthly sewing pattern	✓	✓	✓	✓
Monthly pattern video	✓	✓	✓	✓
Monthly live event	✓	✓	✓	✓
Monthly sneak peek	✓	✓	✓	✓
Discord channel	✓	✓	✓	✓
One Charm PDF gift per year (Gertie's choice)	✓	✓	✓	✓
First access to Charm merchandise	✓	✓	✓	✓
<i>Vintage by Gertie</i> quarterly magazine	x	✓	✓	✓
Monthly bonus content: pattern or digital download	x	✓	✓	✓
40% off one print or PDF Charm Pattern (3x per year)	x	x	✓	✓
Annual physical gift	x	x	✓	✓
Charm Pattern sneak peaks	x	x	✓	✓
100% off all new Charm Patterns when they are released (in PDF)	x	x	x	✓
PDF Charm sloper of the Charm Bodice Block (not released to the public)	x	x	x	✓
5% off and first dibs on signing up for Gertie's 2024 in-person Charm Sewing Retreats	x	x	x	✓
Regular exclusive live event as our Inner Circle board of advisors	x	x	x	✓
Names listed as Inner Circle patrons in <i>Vintage by Gertie</i> magazine	x	x	x	✓
20% off Charm merchandise, 2x per year, plus access to past annual gifts (according to availability)	x	x	x	✓

NOW AVAILABLE FROM CHARM PATTERNS



You will also find these free PDF patterns in our shop:



Read all of Gretchen Hirsch's books to advance your sewing skills!
Available to purchase or order from your favorite bookseller.

