

STEP-BY-STEP TUTORIAL drawing a curly hairstyle



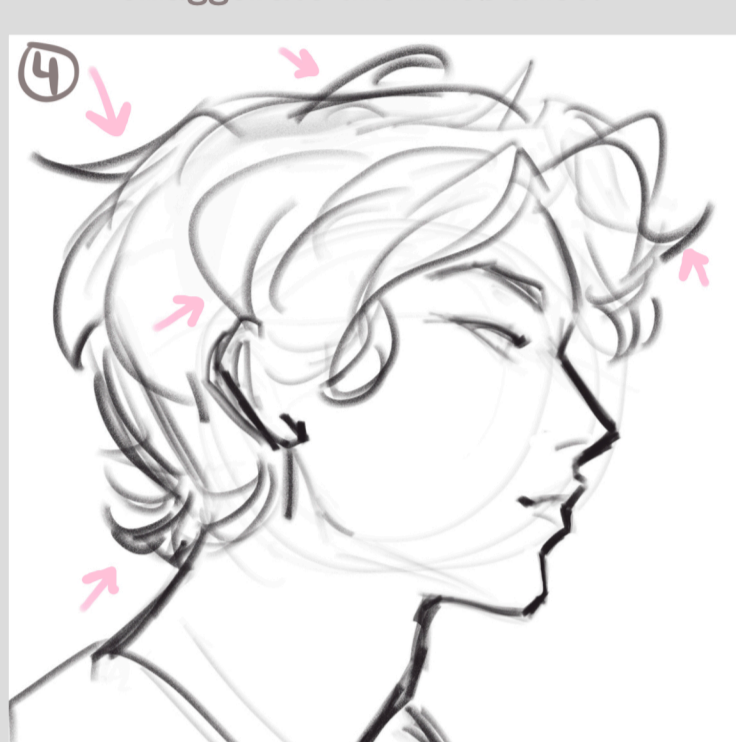
Before starting any hairstyle, it's important to first establish the overall shape of the head with some loose line work. This helps you to shape the hair around it in a proportional way :)



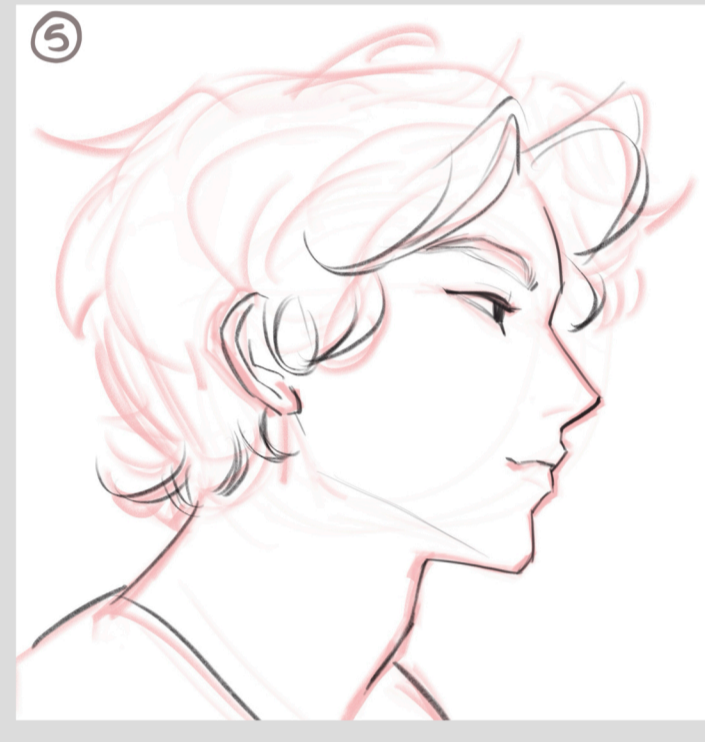
Based on the head shape, I can plan the flow of the hairstyle around it like you see here. Curly hair creates some very unique shapes and curves, so you can exaggerate the lines a lot!



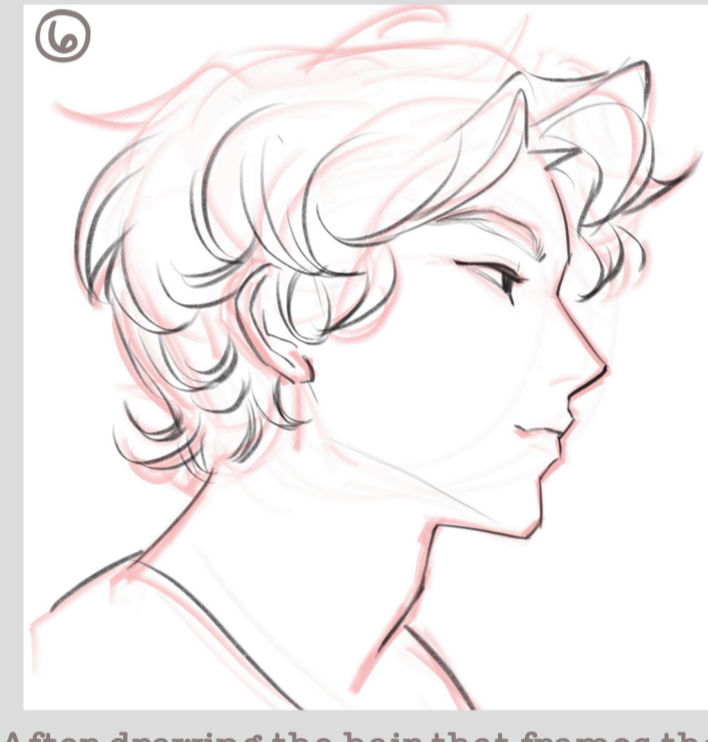
From there, I can sketch some loose line work based on that shape outline. This is just the gesture sketch, so I'm keeping it very loose.



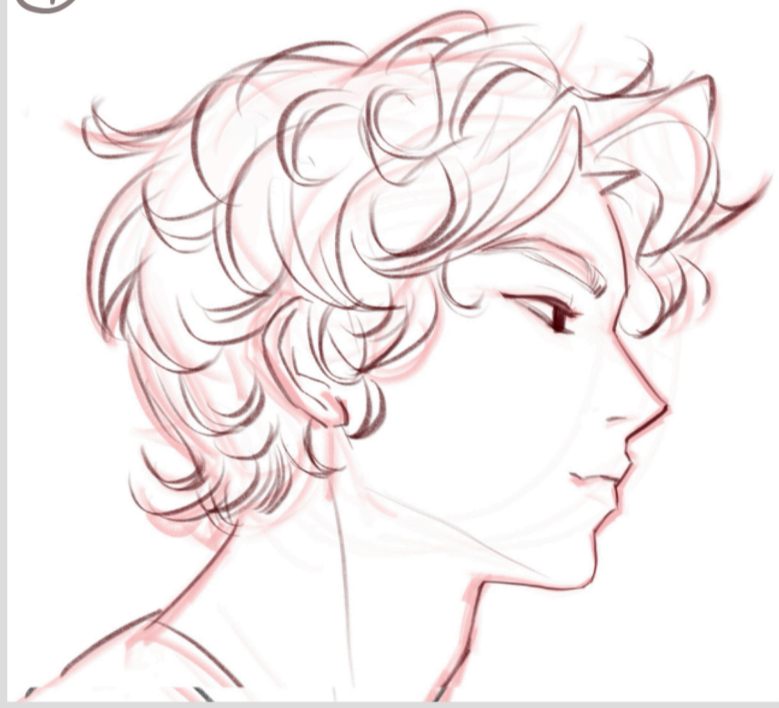
With the base shape of the hair established, I can go around the edges and add some extra shapes to create a layered look.



Next I change my gesture sketch color to a shade of red, lower the opacity, and start on the line art! I always start with the hair that frames the face first – this makes it easier to build out the layers of hair :)



After drawing the hair that frames the face, I move on to drawing the other hair clumps! I keep my brush strokes short and curved, changing the direction of each curl so they don't all curve the same way :)



After drawing some loose curls, this is what it looks like! I changed the line art color to a dark red in Curves, but this is optional :)



Now let's color! I put down a base color underneath my sketch layers. I'll also use my eraser to sculpt the outline of the curls around the hair like you see here :)



On the same base color layer, I'll create extra curls around the edges of the hair for additional detail.



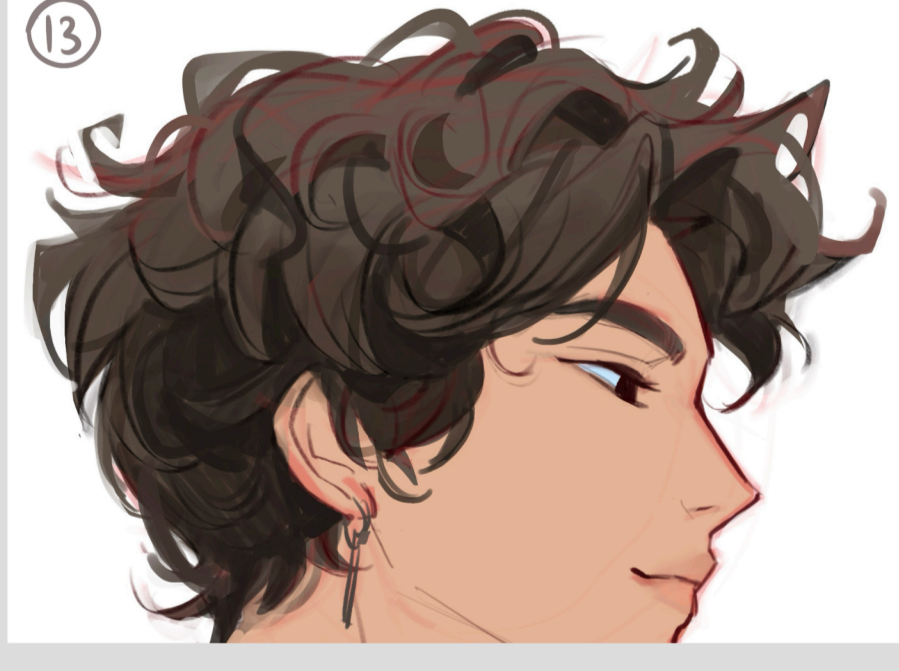
Now on a multiply layer (above the sketch layer and the base color layer) I'll use my lasso tool to create darker shapes around my sketch lines – which will help emphasize the curls :)



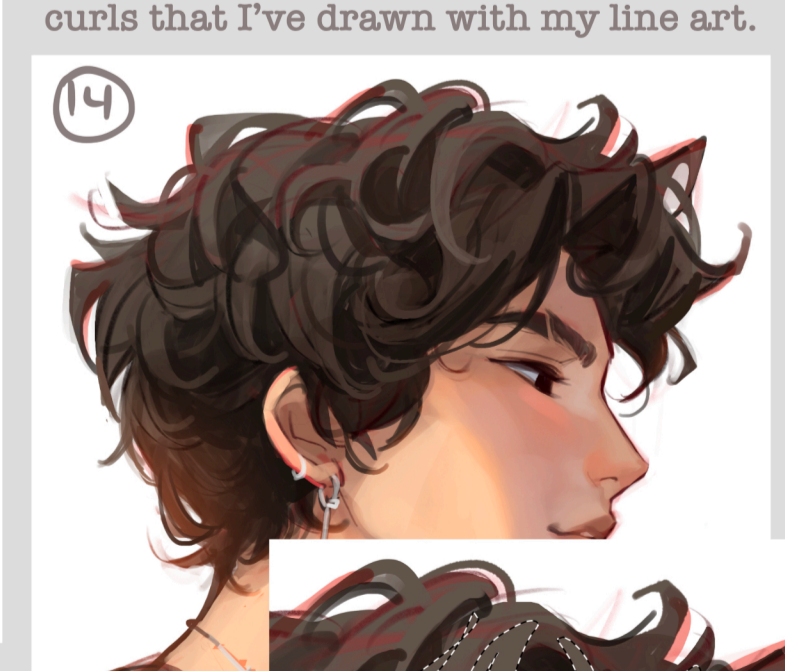
This is what it looks like after. I also shaded the lower half of the hair, leaving the top of the hair slightly lighter :)



I'll gradually build up the shadows/darker values on a multiply layer, progressively using darker shades of brown. I focus on shading around the curls that I've drawn with my line art.



After shading, I like to create a normal layer and start my color picker to select values in the hair and draw more curls! Right here I specifically focused on the outer edges of the hair. It helps to also select the background color and use that color to sculpt the hair and create holes/openings in solid areas :)



Still on a normal layer, I'll select lighter colors in the hair and paint curls on top of darker areas to create volume and depth. Using a lasso tool is good for this too!



Lastly, I'll use a small round brush to draw some thinner hair strands next to thicker hair clumps.

As a final touch, I created an overlay layer to add some red tones on the edges of the hair :)

DONE