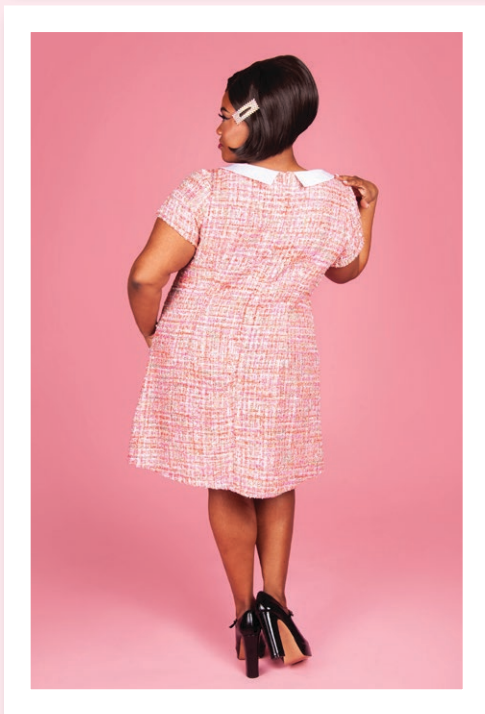




A PATREON EXCLUSIVE BY CHARM PATTERNS



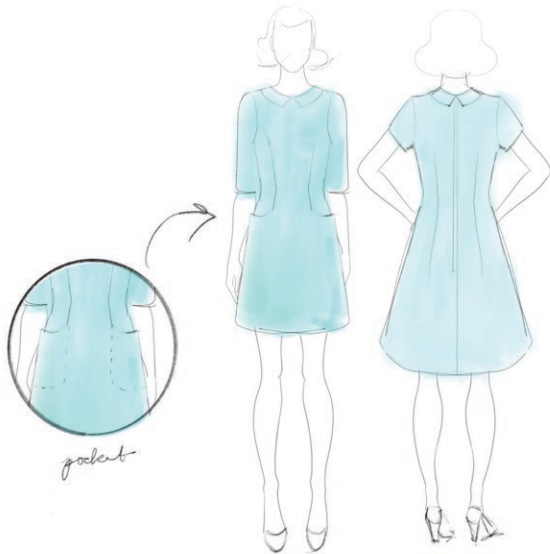
STUDY HALL DRESS



You'll be a star pupil in this 1960s-inspired Study Hall Dress. With two dress lengths (including a very short mod skirt!), two sleeve lengths, and an optional collar, this will be the perfect dress to transition into warmer weather this spring.

The unique princess lines carry into the full front pockets, perfect for stashing treats and secret notes to pass to friends. Plus the design allows you to play with color blocking or fabric on the bias for added interest—and this makes a nice sewing challenge, too!

xoxo, Gertie



Dress with short sleeves



Dress with three-quarter length sleeves and collar

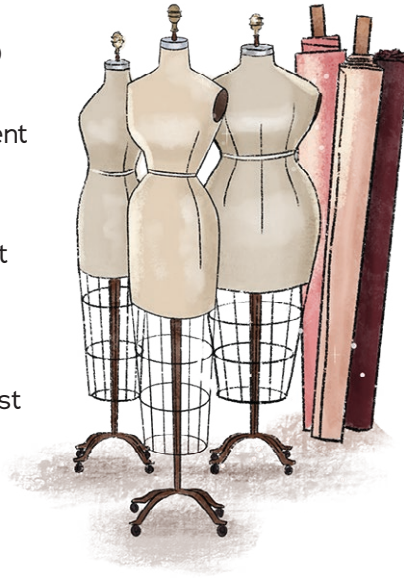


SIZE CHART

The Study Hall Dress is sized in women's US 2–20 and 18–34, A–H cup sizes. Please use the chart below to pick your size. The High Bust measurement should be taken above your breasts and the Full Bust measurement should be taken at the fullest part of your bustline. Take the Waist measurement at the smallest part of your torso and the Hip measurement at the widest part of your hips.

Note that it is best to choose your size by your bust measurements (and add or remove from the side seams at the waist if needed).

Not sure which size range to choose? Learn more about our [two size ranges here!](#)



Sizes

2–20	2	4	6	8	10	12	14	16	18	20
High Bust	29 in 73.7 cm	31 in 78.7 cm	33 in 83.8 cm	35 in 88.9 cm	37 in 94 cm	39 in 99 cm	41 in 104.1 cm	43 in 109.2 cm	45 in 114.3 cm	47 in 119.4 cm
Bust A cup	30.5 in 77.5 cm	32.5 in 82.5 cm	34.5 in 87.6 cm	36.5 in 92.7 cm	38.5 in 97.8 cm	40.5 in 102.9 cm	42.5 in 108 cm	44.5 in 113 cm	46.5 in 118.1 cm	48.5 in 123.2 cm
Bust B/C cup	31 in 78.7 cm	33 in 83.8 cm	35 in 88.9 cm	37 in 94 cm	39 in 99 cm	41 in 104.1 cm	43 in 109.2 cm	45 in 114.3 cm	47 in 119.4 cm	49 in 124.5 cm
Bust D/DD cup	32 in 81.3 cm	34 in 86.4 cm	36 in 91.4 cm	38 in 96.5 cm	40 in 101.6 cm	42 in 106.7 cm	44 in 111.8 cm	46 in 116.8 cm	48 in 121.9 cm	50 in 127 cm
Bust F/G cup	33 in 83.8 cm	35 in 88.9 cm	37 in 94 cm	39 in 99 cm	41 in 104.1 cm	43 in 109.2 cm	45 in 114.3 cm	47 in 119.4 cm	49 in 124.5 cm	51 in 129.5 cm
Bust H cup	34 in 86.4 cm	36 in 91.4 cm	38 in 96.5 cm	40 in 101.6 cm	42 in 106.7 cm	44 in 111.8 cm	46 in 116.8 cm	48 in 121.9 cm	50 in 127 cm	52 in 132.1 cm
Waist	24 in 61 cm	26 in 66 cm	28 in 71.1 cm	30 in 76.2 cm	32 in 81.3 cm	34 in 86.4 cm	36 in 91.4 cm	38 in 96.5 cm	40 in 101.6 cm	42 in 106.7 cm
Hips	36 in 91.4 cm	38 in 96.5 cm	40 in 101.6 cm	42 in 106.7 cm	44 in 111.8 cm	46 in 116.8 cm	48 in 121.9 cm	50 in 127 cm	52 in 132.1 cm	54 in 137.2 cm

Sizes

18–34	18	20	22	24	26	28	30	32	34
High Bust	39.5 in 100.3 cm	41.5 in 105.4 cm	43.5 in 110.5 cm	45.5 in 115.6 cm	47.5 in 120.7 cm	49.5 in 125.7 cm	51.5 in 130.8 cm	53.5 in 135.9 cm	55.5 in 141 cm
Bust A/B cup	42.5 in 108 cm	44.5 in 113 cm	46.5 in 118.1 cm	48.5 in 123.2 cm	50.5 in 128.3 cm	52.5 in 133.4 cm	54.5 in 138.4 cm	56.5 in 143.5 cm	58.5 in 148.6 cm
Bust C cup	43 in 109.2 cm	45 in 114.3 cm	47 in 119.4 cm	49 in 124.5 cm	51 in 129.5 cm	53 in 134.6 cm	55 in 139.7 cm	57 in 144.8 cm	59 in 149.9 cm
Bust D/DD cup	44 in 111.8 cm	46 in 116.8 cm	48 in 121.9 cm	50 in 127 cm	52 in 132.1 cm	54 in 137.2 cm	56 in 142.2 cm	58 in 147.3 cm	60 in 152.4 cm
Bust F/G cup	45 in 114.3 cm	47 in 119.4 cm	49 in 124.5 cm	51 in 129.5 cm	53 in 134.6 cm	55 in 139.7 cm	57 in 144.8 cm	59 in 149.9 cm	61 in 154.9 cm
Bust H cup	46 in 116.8 cm	48 in 121.9 cm	50 in 127 cm	52 in 132.1 cm	54 in 137.2 cm	56 in 142.2 cm	58 in 147.3 cm	60 in 152.4 cm	62 in 157.5 cm
Waist	40 in 101.6 cm	42 in 106.7 cm	44 in 111.8 cm	46 in 116.8 cm	48 in 121.9 cm	50 in 127 cm	52 in 132.1 cm	54 in 137.2 cm	56 in 142.2 cm
Hips	48 in 121.9 cm	50 in 127 cm	52 in 132.1 cm	54 in 137.2 cm	56 in 142.2 cm	58 in 147.3 cm	60 in 152.4 cm	62 in 157.5 cm	64 in 162.6 cm



Pick the right level for you

The Study Hall Dress is a fun princess-seamed dress with pockets and a forgiving fit. It's perfect for Charm School students of all levels!

BEGINNER

Follow the written instructions along with the companion video to create the Study Hall Dress in any of the recommended fabrics. Cotton broadcloth (a high-quality quilting cotton) is a great choice!

INTERMEDIATE

Sew the dress using the instructions and/or video, focusing on carefully pressing your stitches after every step and clipping all curved seams. This is the perfect time to master using your tailor's ham! Use any of the recommended fabrics and consider color blocking (using different colors on different areas of the dress).

ADVANCED

Sew the dress in a striped or plaid fabric and play with cutting the Dress Side Front on the bias. For a real challenge, draft an all-in-one facing or lining and make a sleeveless dress.

FABRIC NOTES

We recommend light-to medium-weight wovens:

cottons like shirting, flannel, poplin, broadcloth, madras, eyelet, sateen, denim, corduroy, and twill; linen and linen blends; wool suitings, flannel, and tweed; brocade; or silk/wool blends. Stretch wovens are suitable, but knit fabrics are not recommended for this design.

For the pocket lining, we recommend light-weight silks, cottons, or lining fabrics.

MATERIALS & NOTIONS

- Fabric for the dress
- Lining for the pocket
- Thread to match
- Lightweight fusible interfacing (look for woven, weft, or tricot types)
- 1/4-in-wide fusible stay tape to stabilize the zipper (alternatively, cut a strip from a scrap of fusible interfacing yardage)
- 22-in regular nylon zipper

RESOURCES

Here are some of the fabrics we used for the samples and in the tutorial video.

[Italian Wool Plaid in Wine](#)

[Pink Sparkly Boucle](#)

[Seafoam Gabardine](#)

FIT NOTES

The Study Hall Dress is a semi-fitted dress with princess seams for shaping.

The pattern is designed to fit with between 4 and 4½ inches (in) (10.1 to 11.4 cm) of ease in the bust, 5 to 7¼ in (12.7 to 18.4 cm) of ease at the waist, and 2 to 2¾ in (5 to 7 cm) of ease in the hips. See the charts below for finished garment measurements.

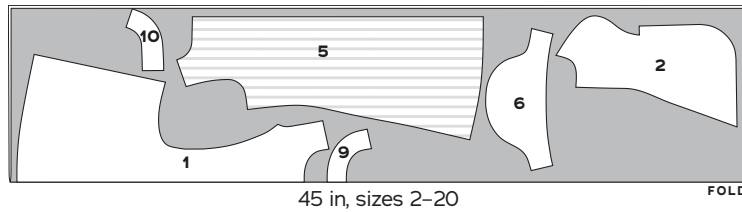
FINISHED MEASUREMENTS

	Sizes										
	2-20	2	4	6	8	10	12	14	16	18	20
Bust A	35 in 88.9 cm	37 in 94 cm	39 in 99.1 cm	41 in 104.1 cm	43 in 109.2 cm	45 in 114.3 cm	47 in 119.4 cm	49 in 124.5 cm	51 in 129.5 cm	53 in 134.6 cm	
Bust B/C	35.5 in 90.2 cm	37.5 in 95.3 cm	39.5 in 100.3 cm	41.5 in 105.4 cm	43.5 in 110.5 cm	45.5 in 115.6 cm	47.5 in 120.7 cm	49.5 in 125.7 cm	51.5 in 130.8 cm	53.5 in 135.9 cm	
Bust D/DD	36.5 in 92.7 cm	38.5 in 97.8 cm	40.5 in 102.9 cm	42.5 in 108 cm	44.5 in 113 cm	46.5 in 118.1 cm	48.5 in 123.2 cm	50.5 in 128.3 cm	52.5 in 133.4 cm	54.5 in 138.4 cm	
Bust F/G	37.5 in 95.3 cm	39.5 in 100.3 cm	41.5 in 105.4 cm	43.5 in 110.5 cm	45.5 in 115.6 cm	47.5 in 120.7 cm	49.5 in 125.7 cm	51.5 in 130.8 cm	53.5 in 135.9 cm	55.5 in 141 cm	
Bust H	38.5 in 97.8 cm	40.5 in 102.9 cm	42.5 in 108 cm	44.5 in 113 cm	46.5 in 118.1 cm	48.5 in 123.2 cm	50.5 in 128.3 cm	52.5 in 133.4 cm	54.5 in 138.4 cm	56.5 in 143.5 cm	
Waist	31.25 in 79.4 cm	33.25 in 84.5 cm	35.25 in 89.5 cm	37.25 in 94.6 cm	39.25 in 99.7 cm	41.25 in 104.8 cm	43.25 in 109.9 cm	45.25 in 114.9 cm	47.25 in 120 cm	49.25 in 125.1 cm	
Hips	38 in 96.5 cm	40 in 101.6 cm	42 in 106.7 cm	44 in 111.8 cm	46 in 116.8 cm	48 in 121.9 cm	50 in 127 cm	52 in 132.1 cm	54 in 137.2 cm	56 in 142.2 cm	
Sweep (Long)	53.5 in 135.9 cm	55.5 in 141 cm	57.5 in 146.1 cm	59.5 in 151.1 cm	61.5 in 156.2 cm	63.5 in 161.3 cm	65.5 in 166.4 cm	67.5 in 171.5 cm	69.5 in 176.5 cm	71.5 in 181.6 cm	
Sweep (Short)	50.75 in 128.9 cm	52.75 in 134 cm	54.75 in 139.1 cm	56.75 in 144.1 cm	58.75 in 149.2 cm	60.75 in 154.3 cm	62.75 in 159.4 cm	64.75 in 164.5 cm	66.75 in 169.5 cm	68.75 in 174.6 cm	
CB Length (Long)	36.5 in 92.7 cm	36.5 in 92.7 cm	36.5 in 92.7 cm	36.5 in 92.7 cm	36.75 in 93.3 cm	36.75 in 93.3 cm	36.75 in 93.3 cm	36.75 in 93.3 cm	37 in 94 cm	37 in 94 cm	
CB Length (Short)	33.75 in 85.7 cm	33.75 in 85.7 cm	33.75 in 85.7 cm	33.75 in 85.7 cm	34 in 86.4 cm	34 in 86.4 cm	34 in 86.4 cm	34 in 86.4 cm	34.25 in 87 cm	34.25 in 87 cm	
Bicep	13.75 in 34.9 cm	14.5 in 36.8 cm	15 in 38.1 cm	15.75 in 40 cm	16.25 in 41.3 cm	17 in 43.2 cm	17.5 in 44.5 cm	18.25 in 46.4 cm	18.75 in 47.6 cm	19.5 in 49.5 cm	

	Sizes									
	18-34	18	20	22	24	26	28	30	32	34
Bust A/B	46.5 in 118.1 cm	48.5 in 123.2 cm	50.5 in 128.3 cm	52.5 in 133.4 cm	54.5 in 138.4 cm	56.5 in 143.5 cm	58.5 in 148.6 cm	60.5 in 153.7 cm	62.5 in 158.8 cm	
Bust C	47 in 119.4 cm	49 in 124.5 cm	51 in 129.5 cm	53 in 134.6 cm	55 in 139.7 cm	57 in 144.8 cm	59 in 149.9 cm	61 in 154.9 cm	63 in 160 cm	
Bust D/DD	48 in 121.9 cm	50 in 127 cm	52 in 132.1 cm	54 in 137.2 cm	56 in 142.2 cm	58 in 147.3 cm	60 in 152.4 cm	62 in 157.5 cm	64 in 162.6 cm	
Bust F/G	49 in 124.5 cm	51 in 129.5 cm	53 in 134.6 cm	55 in 139.7 cm	57 in 144.8 cm	59 in 149.9 cm	61 in 154.9 cm	63 in 160 cm	65 in 165.1 cm	
Bust H	50 in 127 cm	52 in 132.1 cm	54 in 137.2 cm	56 in 142.2 cm	58 in 147.3 cm	60 in 152.4 cm	62 in 157.5 cm	64 in 162.6 cm	66 in 167.6 cm	
Waist	45 in 114.3 cm	47 in 119.4 cm	49 in 124.5 cm	51 in 129.5 cm	53 in 134.6 cm	55 in 139.7 cm	57 in 144.8 cm	59 in 149.9 cm	61 in 154.9 cm	
Hips	50.75 in 128.9 cm	52.75 in 134 cm	54.75 in 139.1 cm	56.75 in 144.1 cm	58.75 in 149.2 cm	60.75 in 154.3 cm	62.75 in 159.4 cm	64.75 in 164.5 cm	66.75 in 169.5 cm	
Sweep (Long)	65.5 in 166.4 cm	67.5 in 171.5 cm	69.5 in 176.5 cm	71.5 in 181.6 cm	73.5 in 186.7 cm	75.5 in 191.8 cm	77.5 in 196.9 cm	79.5 in 201.9 cm	81.5 in 207 cm	
Sweep (Short)	63 in 160 cm	65 in 165.1 cm	67 in 170.2 cm	69 in 175.3 cm	71 in 180.3 cm	73 in 185.4 cm	75 in 190.5 cm	77 in 195.6 cm	79 in 200.7 cm	
CB Length (Long)	37.25 in 94.6 cm	37.25 in 94.6 cm	37.5 in 95.3 cm	37.5 in 95.3 cm	37.5 in 95.3 cm	37.5 in 95.3 cm	37.75 in 95.9 cm	37.75 in 95.9 cm	37.75 in 95.9 cm	
CB Length (Short)	34 in 86.4 cm	34 in 86.4 cm	34 in 86.4 cm	34 in 86.4 cm	34.25 in 87 cm	34.25 in 87 cm	34.25 in 87 cm	34.25 in 87.6 cm	34.5 in 87.6 cm	
Bicep	15 in 38.1 cm	17 in 43.2 cm	19 in 48.3 cm	21 in 53.3 cm	23 in 58.4 cm	25 in 63.5 cm	27 in 68.6 cm	29 in 73.7 cm	31 in 78.7 cm	

REQUIRED YARDAGE & CUTTING LAYOUTS

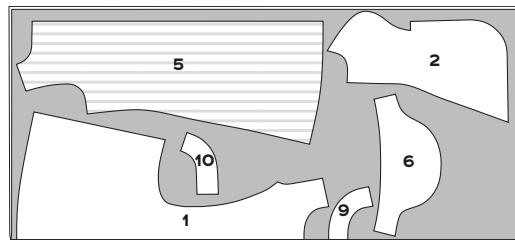
NOTE: All pattern pieces are shown in a “without nap” layout. You may need additional yardage for directional prints, stripes, plaids, and other prints that need to be matched across seamlines.



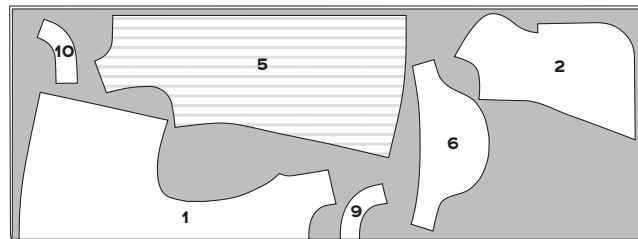
45 in, sizes 2-20

Dress with Short Sleeves (1, 2, 5, 6, 9, 10)

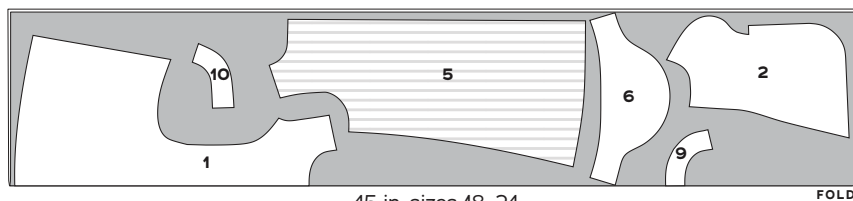
	Sizes 2-10	Sizes 12-20	Sizes 18-24	Sizes 26-34
45 in	2¾ yd 2.5 m	3 yd 2.7 m	3⅛ yd 2.8 m	3½ yd 3.2 m
60 in	1⅞ yd 1.7 m	2⅜ yd 2.2 m	2½ yd 2.3 m	2¾ yd 2.5 m



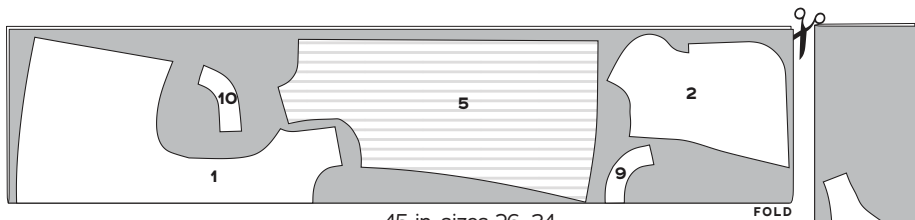
60 in, sizes 2-10



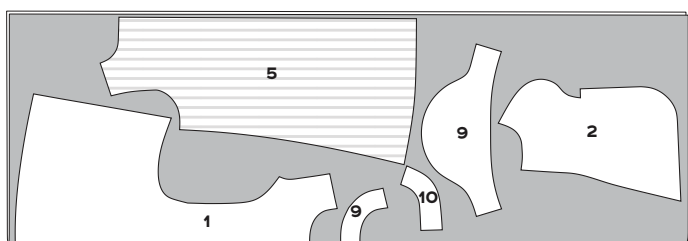
60 in, sizes 12-20



45 in, sizes 18-24



45 in, sizes 26-34



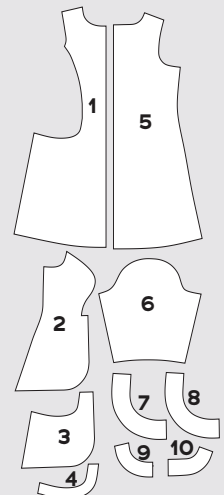
60 in, sizes 18-34

NOTE: for 45-in layouts for sizes 26-34, first cut pieces 1, 2, 5, 9, and 10, then cut fabric and fold along the crosswise to cut piece 6.


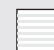
PATTERN PIECES



- 1. Dress Front**
Cut 1 fabric on fold
- 2. Dress Side Front**
Cut 2 fabric
- 3. Pocket Bag**
Cut 2 lining
- 4. Pocket Interfacing**
Cut 2 interfacing
- 5. Dress Back**
Cut 2 fabric
- 6. Sleeve**
Cut 2 fabric
- 7. Collar**
Cut 2 fabric, 2 interfacing
- 8. Undercollar**
Cut 2 fabric
- 9. Front Neck Facing**
Cut 1 fabric on fold, 1 interfacing on fold
- 10. Back Neck Facing**
Cut 2 fabric, 2 interfacing



KEY TO LAYOUTS

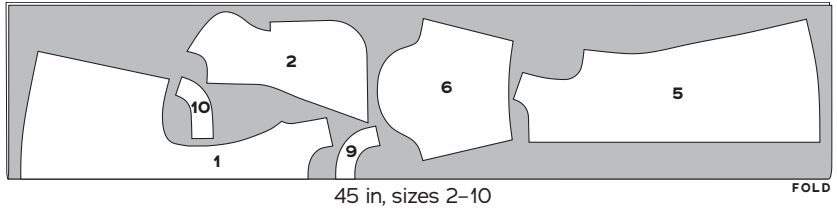
-  Right side of pattern piece
-  Wrong side of pattern piece

Be sure to note whether the pieces are cut on a double or single layer of fabric. For a double layer, there will be a note indicating FOLD on the layout.

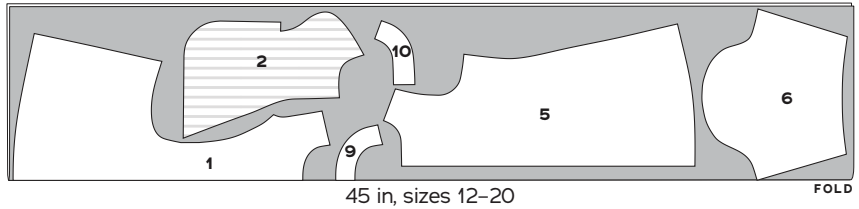
Dress with Three-Quarter Length Sleeves

(1, 2, 5, 6, 9, 10)

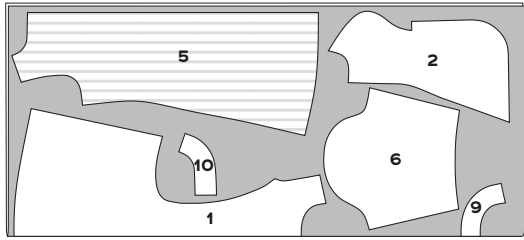
	Sizes 2-10	Sizes 12-20	Sizes 18-24	Sizes 26-34
45 in	3 yd 2.7 m	3 1/8 yd 2.8 m	3 3/8 yd 3.1 m	4 1/4 yd 3.9 m
60 in	1 7/8 yd 1.7 m	2 5/8 yd 2.4 m	2 5/8 yd 2.4 m	3 yd 2.7 m



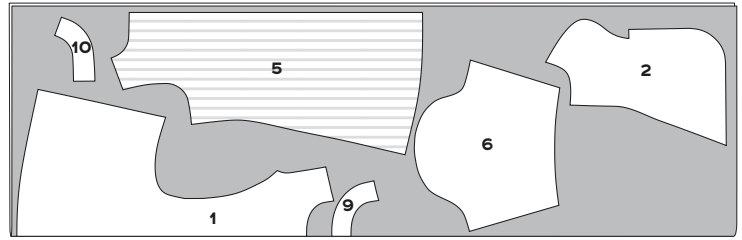
45 in, sizes 2-10



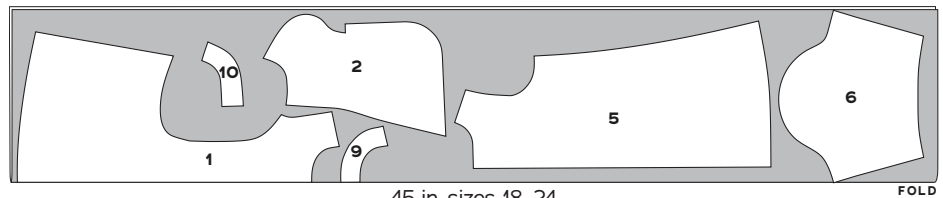
45 in, sizes 12-20



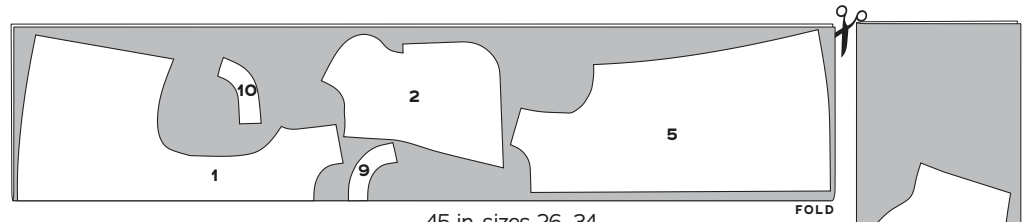
60 in, sizes 2-10



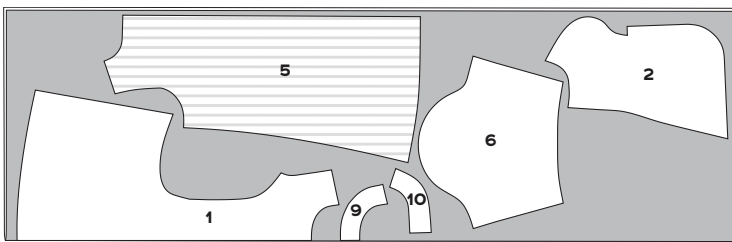
60 in, sizes 12-20



45 in, sizes 18-24



45 in, sizes 26-34

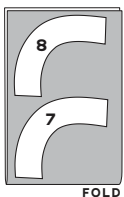


60 in, sizes 18-34

NOTE: for 45-in layouts for sizes 26-34, first cut pieces 1, 2, 5, 9, and 10, then cut fabric and fold along the crosswise to cut piece 6.

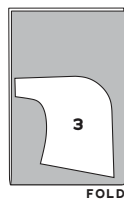
Collar (7, 8)

	Sizes 2-10	Sizes 12-20	Sizes 18-34
All widths	3/8 yd .4 m	1/2 yd .5 m	1/2 yd .5 m



Pocket Bag, Lining (3)

All sizes	
All widths	1/2 yd .5 m



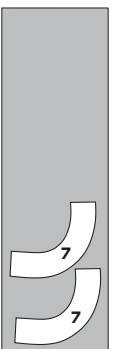
Dress Interfacing (4, 9, 10)

	Sizes 2-20	Sizes 18-34
All widths	1/4 yd .2 m	3/8 yd .5 m



Collar Interfacing (7)

All sizes	
All widths	3/8 yd .4 m



SEWING INSTRUCTIONS

BEFORE SEWING

Transferring marks: use dressmaker's tracing paper and a tracing wheel to transfer all pattern markings to the wrong side (WS) of your fabric. Mark pattern notches by snipping into the seam allowance with the tip of your scissors.

Interfacing: some of the pattern pieces need to be stabilized with fusible interfacing prior to sewing. Follow the interfacing cutting instructions on the pattern pieces. Apply fusible interfacing to the WS of the fabric, using a press cloth and steam. Do not rub your iron back and forth; lift it up and press it down for several seconds at a time until interfacing is fully adhered.

Seam finishing: if finishing seams with a serger, serge the following seam allowances (without trimming the edges) before construction. If you don't have a serger, consider using a zigzag or overlock stitch on your sewing machine.

- Dress Front shoulder and side seams
- Dress Side Front pocket and side seam
- Pocket Bag short straight edge, long curved edge, and side seam
- Dress Back shoulder, center back (CB), and side seam
- Sleeve vertical seam
- Front and Back Neck Facing lower curved edge

NOTES

- 5/8-in (1.5 cm) seam allowances are included on all pattern pieces, except where otherwise noted.
- For a short sleeve dress, cut the Sleeve at the short sleeve cutting line.

- For a short skirt, cut the Dress Front and Dress Back on the short skirt cutting line.
- Press your stitching lines after every step, even when not specified in the instructions. You do not need to press basting stitches.

SEW THE DRESS

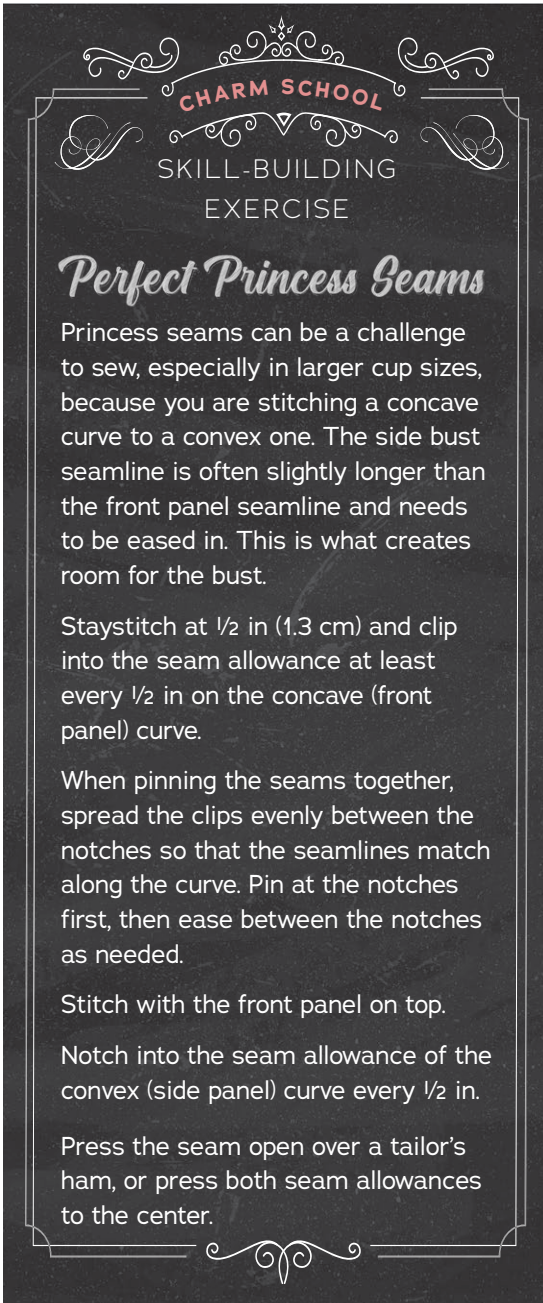
FRONT

1. Staystitch neckline: on Dress Front (1), using a 1/2-in (1.3 cm) seam allowance, staystitch front neckline from each shoulder to the center front (CF) so the stitching lines meet at CF. Repeat on Dress Backs (5).

2. Staystitch princess seams: on dress front, staystitch princess seam and pocket opening using a 1/2-in (1.3 cm) seam allowance, stitching from armhole opening to side seam. Clip into seam allowance every 1/2 in (1.3 cm), being careful not to clip into the stitching. Repeat on Dress Side Fronts (2), staystitching and clipping from armhole opening to lower notch.

3. Interface pocket bag: fuse Pocket Interfacing (4) to the WS of each Pocket Bag (3).

4. Attach pocket bag to dress front: pin the pocket bag to the dress front, right sides (RS) together, at pocket opening, matching circles. Stitch the pocket opening from the pocket opening circle to the side seam edge. Grade the seam allowances so the dress front is wider and the pocket bag is narrower. Clip into curves every 1/2 in (1.3 cm). **NOTE:** do not understitch the pocket bag; understitching will happen in a later step after the princess seams are sewn.



CHARM SCHOOL
SKILL-BUILDING
EXERCISE

Perfect Princess Seams

Princess seams can be a challenge to sew, especially in larger cup sizes, because you are stitching a concave curve to a convex one. The side bust seamline is often slightly longer than the front panel seamline and needs to be eased in. This is what creates room for the bust.

Staystitch at 1/2 in (1.3 cm) and clip into the seam allowance at least every 1/2 in on the concave (front panel) curve.

When pinning the seams together, spread the clips evenly between the notches so that the seamlines match along the curve. Pin at the notches first, then ease between the notches as needed.

Stitch with the front panel on top.

Notch into the seam allowance of the convex (side panel) curve every 1/2 in.

Press the seam open over a tailor's ham, or press both seam allowances to the center.

5. Sew princess seams: pin dress side front to dress front along the princess seam from armhole edge to pocket opening circle, spreading the clipped seam allowances so the curves match. Stitch, ending and backstitching exactly at the pocket opening circle. Clip into seam allowances to pocket opening circle. Trim seam allowances to $\frac{3}{8}$ in (1 cm), and finish as one. Press seam allowances towards CF.

6. Attach pocket bag to dress side front: pin dress side front to pocket bag along the short upper edge and long curved edge, RS together, matching circles. Stitch, starting exactly at the pocket opening circle, pivoting at the second circle, and ending at the side seam edge.

7. Understitch pocket bag: from RS, with pocket bag opened out from the dress front unit and seam allowances underneath, stitch the pocket bag $\frac{1}{8}$ in (3 mm) from the seamline, catching seam allowances in stitching. Turn pocket bag to WS of dress and press pocket opening edge, rolling seamline slightly so it is hidden inside.

8. Baste side seam edge: pin WS of dress front to RS of dress side front at side seam, matching notches and sandwiching the pocket bag inside. Baste with a $\frac{1}{2}$ -in (1.3 cm) seam allowance. **NOTE:** ease is built into the pocket so the pieces will not align when laid flat. Pin the raw edges together along the side seam edge, matching notches, and the pocket should “bubble out” just enough to put your hand inside. Perfect!

BACK

1. Stabilize zipper opening: apply $\frac{1}{4}$ -in-wide (3 cm) strips of fusible interfacing to the WS of the CB opening above zipper circle.

2. Sew fisheye darts: on dress back, match dart legs, RS together, then stitch each end of the fisheye dart in two separate steps, working from the center of the dart to the dart point. Backstitch in the center but not at the points, leaving a few inches of thread at the points. Clip into the middle of the dart. Tie off the threads and trim. Press the darts towards CB.

3. Sew dress backs: pin the dress backs, RS together, and stitch the CB seam from the hem allowance edge up to the zipper circle. Backstitch. Press the seam allowances open.

4. Sew shoulder seams: pin dress front unit to dress back unit at shoulder seam, RS together. Stitch. Press seam allowances open.

5. Sew side seams: with RS together, pin dress front unit to dress back unit, matching notches. Stitch side seams and press seam allowances towards the back.

COLLAR

1. Sew collar: pin interfaced Collar (7) to uninterfaced Undercollar (8), RS together. Stitch along three sides, leaving notched edge open and pivoting at corners. Trim points close to the stitching and grade seam allowances so that the interfaced collar seam allowance is slightly wider than the uninterfaced undercollar seam allowance. Notch into seam allowances along curves. Turn collar RS out, making sure corners are sharp by using a point turner, knitting needle, or pin to gently poke or pull them out.

2. Understitch collar: from RS, with the uninterfaced undercollar opened out and the seam allowances underneath, stitch $\frac{1}{8}$ in (3 mm) from the seamline along the long edge only, catching seam allowances in stitching. Press collar piece flat, rolling seamline slightly to WS so it is hidden on the uninterfaced collar side. Baste collar raw edges together.

3. Sew collar to bodice: pin collar unit to RS of dress, with uninterfaced side against dress, matching circles and matching notches to shoulder seams. Baste collar to bodice with $\frac{1}{2}$ -in (1.3 cm) seam allowance. Clip into curves along neckline as needed, being careful not to clip into stitching.

FACING

1. Sew facing shoulder seams: pin Front Neck Facing (9) to Back Neck Facing (10) at shoulder seams, RS together. Stitch and press seam allowances open.

2. Prepare to attach facing with clean finish method: pin facing to dress around neckline, RS together, sandwiching the collar between the dress and the facing. At zipper opening's top edge, working with dress back facing up, fold seam allowances as follows: on right half of opening (the underlap), fold both seam allowances $\frac{1}{2}$ in (1.3 cm) to WS of facing. The facing seam allowance is nested inside the outer fabric seam allowance. On opening's left half (the overlap),

fold facing seam allowance $\frac{7}{8}$ in (2.2 cm) to WS . Fold outer fabric seam allowance $\frac{5}{8}$ in (1.5 cm) to WS. The seam allowances nest inside each other with a $\frac{1}{4}$ -in (6 mm) gap between the two. Folding seam allowances this way ensures facing is finished neatly around the lapped zipper at the neckline. **NOTE:** be sure to watch the tutorial video for visuals on this step.

3. Sew facing to dress: stitch around neckline, starting at one folded edge and ending at the other folded edge. Grade seam allowances so those on the dress are widest and those on the facing are narrowest, with the collar in between. Clip into curves every $\frac{1}{2}$ in (1.3 cm).

4. Understitch neckline: from RS, with facing opened out from the dress and collar and seam allowances underneath, stitch the facing $\frac{1}{8}$ in (3 mm) from the seamline, catching seam allowances in stitching. Turn facing to dress WS and steam neckline edge, rolling seamline slightly so it is hidden inside the dress.

SLEEVES

1. Sew sleeve seam: pin Sleeve (6) RS together along underarm seam. Stitch. Press seam allowances open.

2. Ease sleeve cap: using a 4-mm to 5-mm stitch length, sew two lines of stitching on each sleeve cap between notches. Sew the first using $\frac{1}{2}$ -in (1.3 cm) seam allowance and the second using $\frac{1}{4}$ -in (6 mm) seam allowance. Pull up bobbin threads to gather.

3. Set sleeves into dress: pin each sleeve to dress armholes, RS together, matching underarm seams and notches. Distribute sleeve fullness evenly between notches. Stitch. Trim armhole seam allowances as one to about $\frac{3}{8}$ in (1 cm), then finish seams as desired. If serging, trim and finish simultaneously. Press seam allowances towards the sleeve.

ZIPPER

1. Sew underlap half of zipper: with garment RS out and facing and collar out of the way, press zipper opening seam allowance $\frac{1}{2}$ in (1.3 cm) to WS on the right half of the opening (the underlap). With zipper closed, pin zipper under pressed seam allowance, placing zipper teeth just left of fabric fold. The zipper stop should be positioned just below where the facing meets the dress at the neckline. Open zipper halfway.



Using a zipper foot, stitch from top to bottom next to zipper teeth, just on the fold. As needle approaches zipper pull, stop stitching with needle in the fabric and close zipper; resume stitching to base. Backstitch.

2. Sew overlap half of zipper: on left half of zipper opening (the overlap), press seam allowance under $\frac{5}{8}$ in (1.5 cm). With zipper closed, position overlap over zipper teeth so fabric fold just covers stitching on underlap. Pin overlap to zipper tape, leaving facing and collar free. Open zipper and topstitch overlap $\frac{3}{8}$ in (1 cm) from fold, closing zipper when you reach the pull; finish stitching to base. Pivot the work and stitch across the base of the zipper opening.

FINISHING

1. Sew the sleeve hem: finish raw edge of sleeve hem and press $\frac{5}{8}$ in (1.5 cm) to WS. Topstitch hem in place from RS with a $\frac{1}{2}$ -in (1.3 cm) seam allowance. Press hem flat.

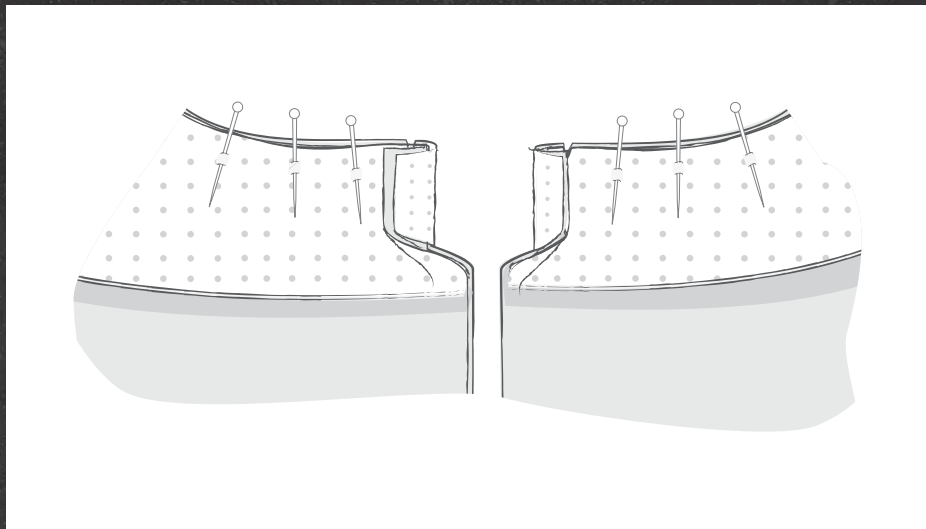
2. Allow the dress to hang for 24 hours before hemming: try on the dress, wearing the shoes you plan to wear with it. Even the hem by measuring up from the floor and marking the desired hemline plus $\frac{5}{8}$ -in (1.5 cm) hem allowance all the way around the skirt. Trim along the marked line.

3. Hem the dress: finish raw edge of hem by desired method. Fold and press the edge under $\frac{5}{8}$ in (1.5 cm). Topstitch $\frac{1}{2}$ in (1.3 cm) from fold. Press hem flat.

Enjoy your fun new Study Hall Dress!

Clean Finish Method for Lapped Zippers

Lapped zippers are a classic vintage detail, and this is Charm's favorite method for installing zippers that result in a neat and tidy finish, inside and out! This method works for garments with facings or linings.



1. Prep your zipper seam allowance as usual. We love using 1/4-in fusible interfacing (stay tape), but a strip cut from your interfacing yardage will do.
2. On the garment, press the overlap side of the zipper under $\frac{5}{8}$ in (1.5 cm). Press the underlap side under $\frac{1}{2}$ in (1.3 cm). As you look at the zipper opening with the RS up, the left side is the overlap and the right side is the underlap.
3. Construct your facing or lining.
4. Place your facing or lining on your ironing board, WS facing up. On the left side (as you look at it), press the seam allowance $\frac{7}{8}$ in (2.2 cm) to the WS. On the right side, press the seam allowance $\frac{1}{2}$ in (1.3 cm) to the WS.
5. Pin the facing or lining to your garment, RS together. At the zipper opening, fold the outer garment seam allowances to the RS, over the facing/lining seam allowances. The facing/lining and its seam allowances will be sandwiched between the outer garment and its seam allowances.
6. Stitch around the neckline, waistline, or relevant part of the garment at $\frac{5}{8}$ in (1.5 cm). Trim the corners at the zipper opening and turn RS out. Trim, grade, and understitch as usual.

Now you're ready to insert your zipper!

PATTERN PIECE LOCATION GUIDE

Here is a list to help you locate the pattern pieces on the letter-size tiled pages and A0 pattern sheets. The tiled pieces and A0 sheets are included as separate PDF files as part of this digital pattern.

SIZES 2-20				SIZES 18-34			
PC#	Piece Name	Tiled	A0	PC#	Piece Name	Tiled	A0
1	Dress Front, A-C Cup	25-30, 40-42	2	1	Dress Front, A-C Cup	37-42, 49-50, 52-54, 64-66	3
2	Dress Side Front, A Cup	31-32, 42-44, 53-56	1	2	Dress Side Front, A/B Cup	11-12, 22-24, 34-36	2
2	Dress Side Front, B/C Cup	37-40, 49-52	2	2	Dress Side Front, C Cup	49-51, 61-64	3
1	Dress Front, D/DD Cup	23, 35-36, 47-48, 58-60, 70-72	3	1	Dress Front, D/DD Cup	43-46, 55-58, 67-69, 79-80, 91-92	4
2	Dress Side Front, D/DD Cup	33-35, 44-47, 56-57	3	2	Dress Side Front, D/DD Cup	46-48, 58-60, 70-72	4
1	Dress Front, F/G Cup	61-66, 76-78	4	1	Dress Front, F/G Cup	64-65, 76-77, 87-89, 98-101, 107-110	5
2	Dress Side Front, F/G Cup	67-70, 79-82	4	2	Dress Side Front, F/G Cup	73-75, 85-87, 97-98	5
1	Dress Front, H Cup	73-75, 83-88	5	1	Dress Front, H Cup	69-72, 81-84, 93-96, 105-106, 111-112	6
2	Dress Side Front, H Cup	79-82, 89-92	5	2	Dress Side Front, H Cup	90-93, 102-105	6
3	Pocket Bag	7-8, 19-20	1	3	Pocket Bag	2-4, 14-16	1
4	Pocket Interfacing	7, 19	2	4	Pocket Interfacing	22, 34	2
5	Dress Back	1-6, 13-18	1	5	Dress Back	5-6, 13-18, 25-30	1
6	Sleeve	9-12, 21-24	2	6	Sleeve	7-9, 19-21, 31-33	2
7	Collar	21, 32-33	1	7	Collar	4-6	1
8	Undercollar	9, 21	2	8	Undercollar	10-12	2
9	Front Neck Facing	1-2	1	9	Front Neck Facing	7-8	1
10	Back Neck Facing	3-4	1	10	Back Neck Facing	1, 13	1

HOW TO USE THIS PATTERN

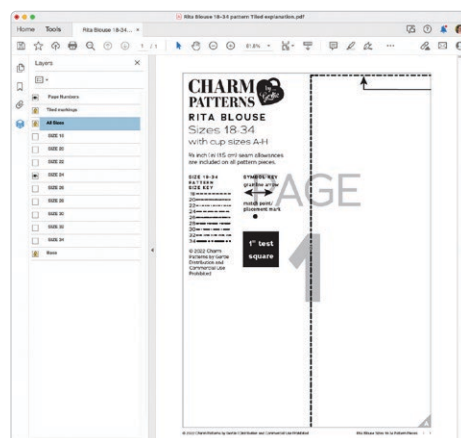
The pattern pieces are tiled so you can print them on Letter (8½ in x 11 in) or A4 size paper. You can also send the A0 pattern sheet PDF to a local or online printer (like ThePlottedPattern.com) to print on large sheets (36 in x 48 in for U.S. or A0 for international).

This pattern includes size layers. To get the best results, open either the Tiled or A0 pattern pieces PDF in [Acrobat Reader](#).

Open the Layers Palette (View>Show/Hide>Navigation Panes>Layers) and hide all of the layer(s) except for the ones you want to print by clicking on the eye icon.

The All Sizes and Tiled Markings layers have general pattern information and will always print.

You may choose to turn off the Page Numbers layer. The page numbers will still appear at the bottom of each page in the footer.



WORKING WITH THE TILED PIECES

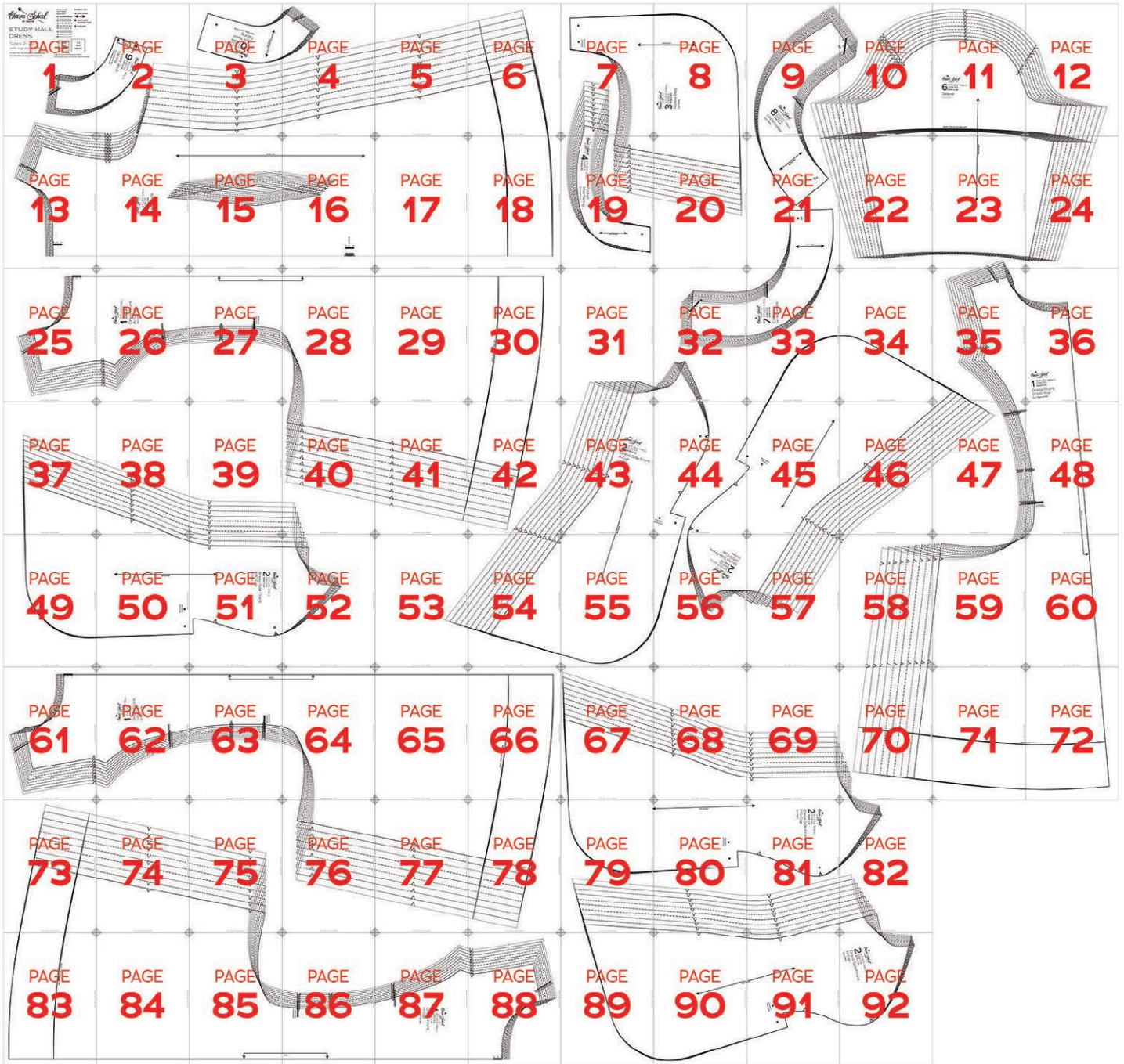
Go to File>Print and change the page range to the pages you need for the pieces you've chosen (see Pattern Pieces Printing Index). Make sure the Page Sizing settings to 100% or Actual Size. Test after printing by measuring the 1 inch or 2 cm test box on the first page of the pattern pieces.

Cut apart any pattern pieces that share a page, then fold back or cut off the page margins on each page as marked.

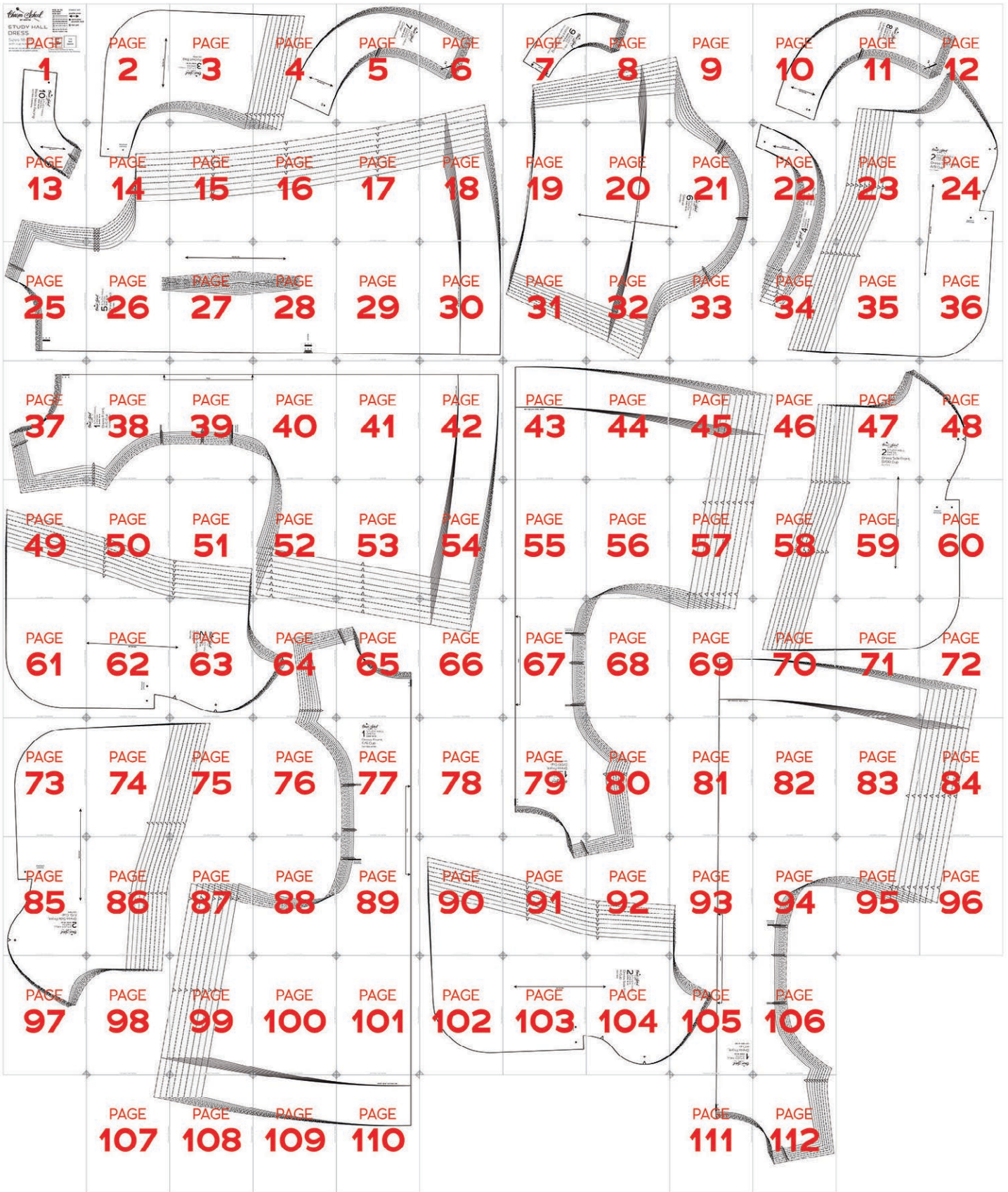
Match the letters in the gray corner diamonds. Tape the pages together, butting up the folded or cut page edges with the gray margin lines.

TILING MAPS

SIZES 2-20



SIZES 18-34



WELCOME TO



Class is in session!

Charm School is a private and exclusive dressmaking academy where your fantasies are stitched into reality.

Enjoy these benefits as part of your Charm School enrollment. For more access, upgrade now to a higher tier [on Patreon](#).

As you explore the hallowed halls, remember our four tenets: **Education, Community, Glamour, and Mastery**. And never forget the motto that generations before us have pledged: *Setire Phantasia*. **Feel the fantasy!**

STUDENT RESOURCES

- Easily find your homework and patterns using the Patreon archive visual index on our [Patreon page](#).
 - Learn which patterns can combine together from our [mix-and-match spreadsheet](#).
 - Shop all Charm sewing patterns and accessories in the [Charm shop](#).
- On Instagram:** Stay in the loop and get inspired by Gertie and other students.
- On YouTube:** Learn beginner and advanced sewing skills and techniques with comprehensive tutorials.



2024 PATREON TIER COMPARISONS



	Sewing Circle	Glamour Circle	Princess Circle	Inner Circle
2024 Price	\$9	\$12	\$20	\$25
Monthly sewing pattern	✓	✓	✓	✓
Monthly pattern video	✓	✓	✓	✓
Monthly live event	✓	✓	✓	✓
Monthly sneak peek	✓	✓	✓	✓
Discord channel	✓	✓	✓	✓
One Charm PDF gift per year (Gertie's choice)	✓	✓	✓	✓
First access to Charm merchandise	✓	✓	✓	✓
<i>Vintage by Gertie</i> quarterly magazine	x	✓	✓	✓
Monthly bonus content: pattern or digital download	x	✓	✓	✓
40% off one print or PDF Charm Pattern (3x per year)	x	x	✓	✓
Annual physical gift	x	x	✓	✓
Charm Pattern sneak peaks	x	x	✓	✓
100% off all new Charm Patterns when they are released (in PDF)	x	x	x	✓
PDF Charm sloper of the Charm Bodice Block (not released to the public)	x	x	x	✓
5% off and first dibs on signing up for Gertie's 2024 in-person Charm Sewing Retreats	x	x	x	✓
Regular exclusive live event as our Inner Circle board of advisors	x	x	x	✓
Names listed as Inner Circle patrons in <i>Vintage by Gertie</i> magazine	x	x	x	✓
20% off Charm merchandise, 2x per year, plus access to past annual gifts (according to availability)	x	x	x	✓

NOW AVAILABLE FROM CHARM PATTERNS



You will also find these free PDF patterns in our shop:



Read all of Gretchen Hirsch's books to advance your sewing skills!
Available to purchase or order from your favorite bookseller.

