

Harmony Explained

Music Theory Explained



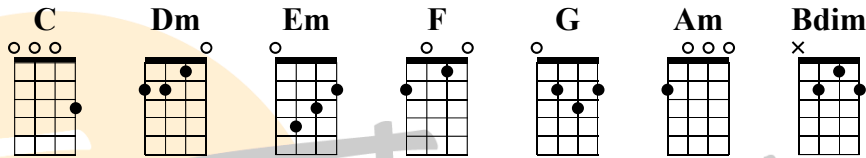
Tenthumbspro.com
For educational purposes only

Key: C

Harmony: C, Dm, Em, F, G, Am, Bdim

Video Tutorial: <https://www.youtube.com/watch?v=X4FW7XDVwdY>

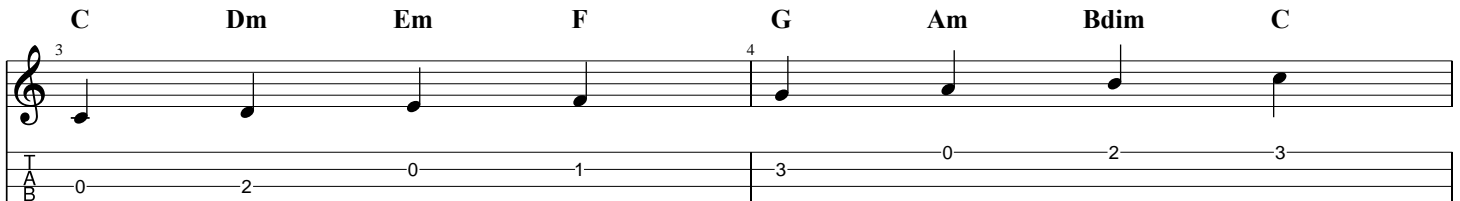
Chord Shapes:



The Three Elements of Music

- Melody
 - This is the part that the vocalist sings, the violin plays or the notes that weave through a song. This is the part that your mind remembers when you think of a song.
- Rhythm
 - Maybe the easiest to recognize but the hardest to master. The strum pattern, the drum pattern, the way the notes are played as opposed to what notes are played.
- Harmony
 - How other notes are used to support the melody.
 - Harmony interacts with the rhythm and supports the melody.

Lets look at the C major scale



- The scale is C, D, E, F, G, A, B
- The chords are C, Dm, Em, F, G, Am, Bdim
- Note that each note has a chord!
 - Also note that each chord is made up of three total notes.
 - Major chords are root, 3rd, 5th
 - Minor chords are root, b3rd, 5th

The C chord has a

- C note
- E note
- G note

So if the harmony is a C that means that any of those three notes will harmonize perfectly with that chord

Musical notation showing a C chord melody. The treble clef staff shows notes C (5), E, G, C, G, B, D. The bass clef staff shows guitar fretting: 0, 0, 0, 3, 2, 5.

These are the notes of the chords of C and G

Musical notation showing the notes of the chords of C and G. The treble clef staff shows notes C (7), G (8). The bass clef staff shows guitar fretting: 0, 0, 0, 2.

- Here is an extremely basic melody, but note that the notes are both in the underlying chords.
- This melody harmonizes perfectly with the chords
- Melodies that are only chord tones can be boring.

Passing Tones

Musical notation showing a passing tone. The treble clef staff shows notes C (9), F, G (10). The bass clef staff shows guitar fretting: 0, 0, 1, 3.

- Here we see the F note played over the C chord, this is called a passing tone
- A passing tone is a non-chord tone that is just use to connect to chord tones.

Color Tones

Musical notation showing color tones. The treble clef staff shows notes C (11), G (12). The bass clef staff shows guitar fretting: 0, 0, 3, 1.

- Here we see the F note land on the G
- It isn't a passing tone because it lands on the chord, it is the end of the phrase.
- When an F is played over a G it creates a G7 sound, color tones will create colorful chords.

What do you need to do next?

1. Find sheet music for your favorite song
 - a. Start in the key of C to make it easier.
 - b. G has one #, F#, so that is also good
 - c. F has one b, the Bb, so it is also good
2. Work out all the notes of the song, write them on the sheet music
3. Identify the phrasing,
 - a. A good way to do this is to look for what is the note that you would breath in between if you were singing.
4. How does the melody work with the chords? What are the color tones? Passing tones? Is it a safe melody with lots of chord tones are a dissonant melody using other notes?

That will level up your music theory BIG TIME.



Ten Thumbs