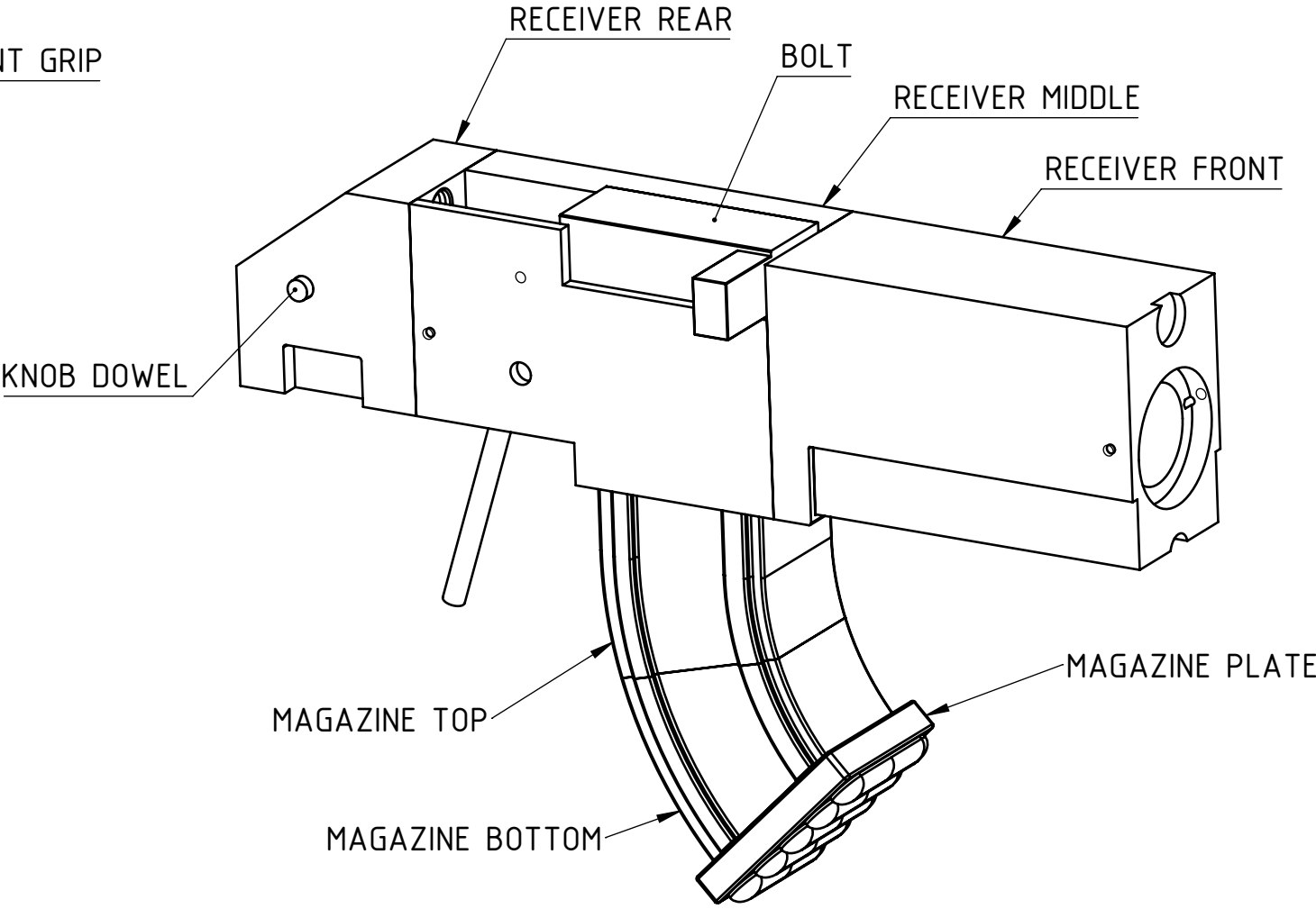
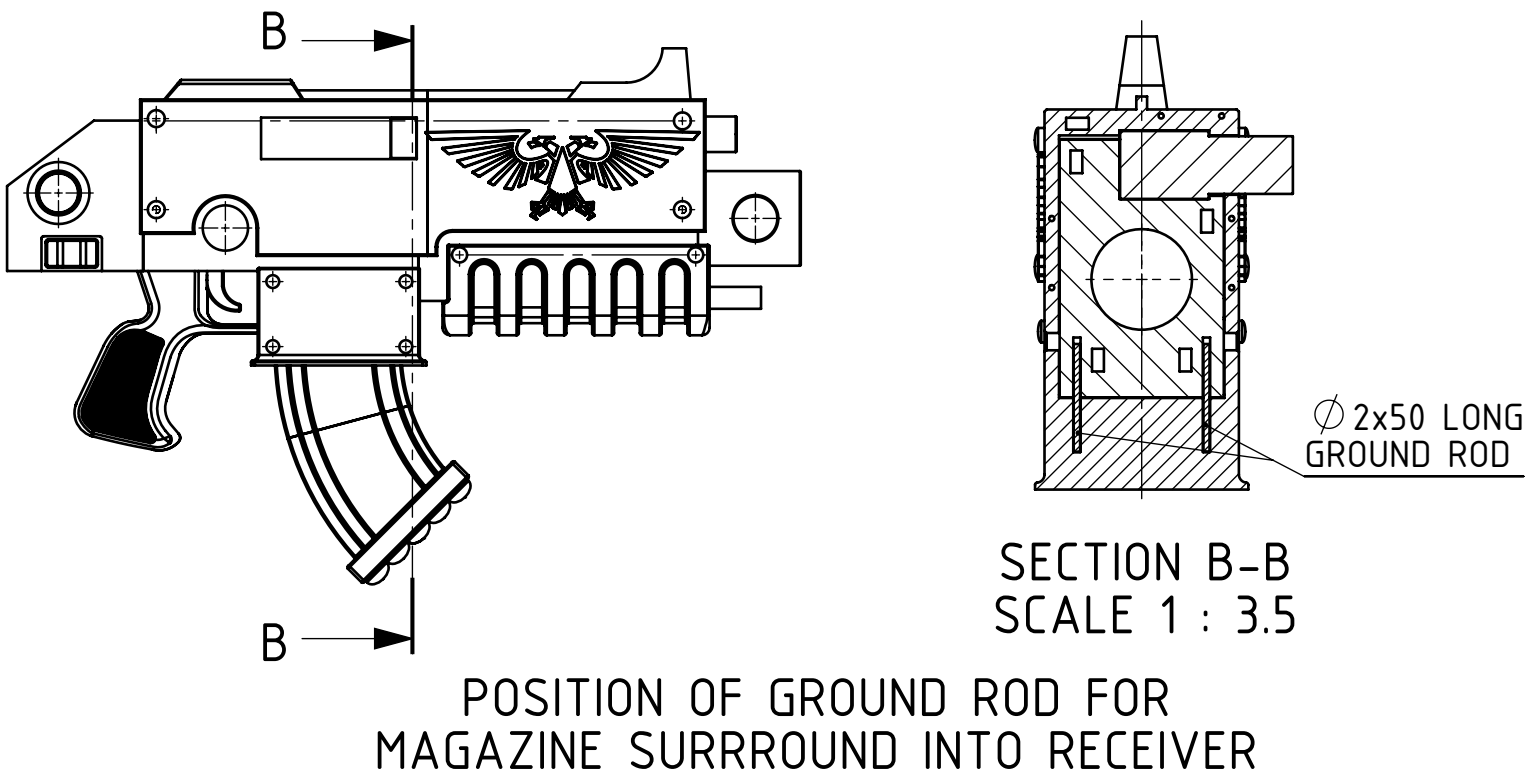


VIEW OF CONNECTION BETWEEN THE MAIN RECEIVER BODY PARTS AND THE RECEIVER COVER PARTS

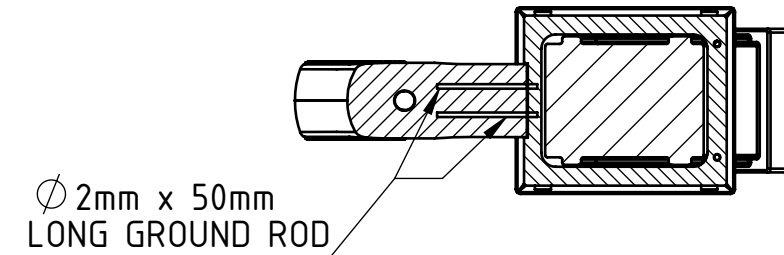
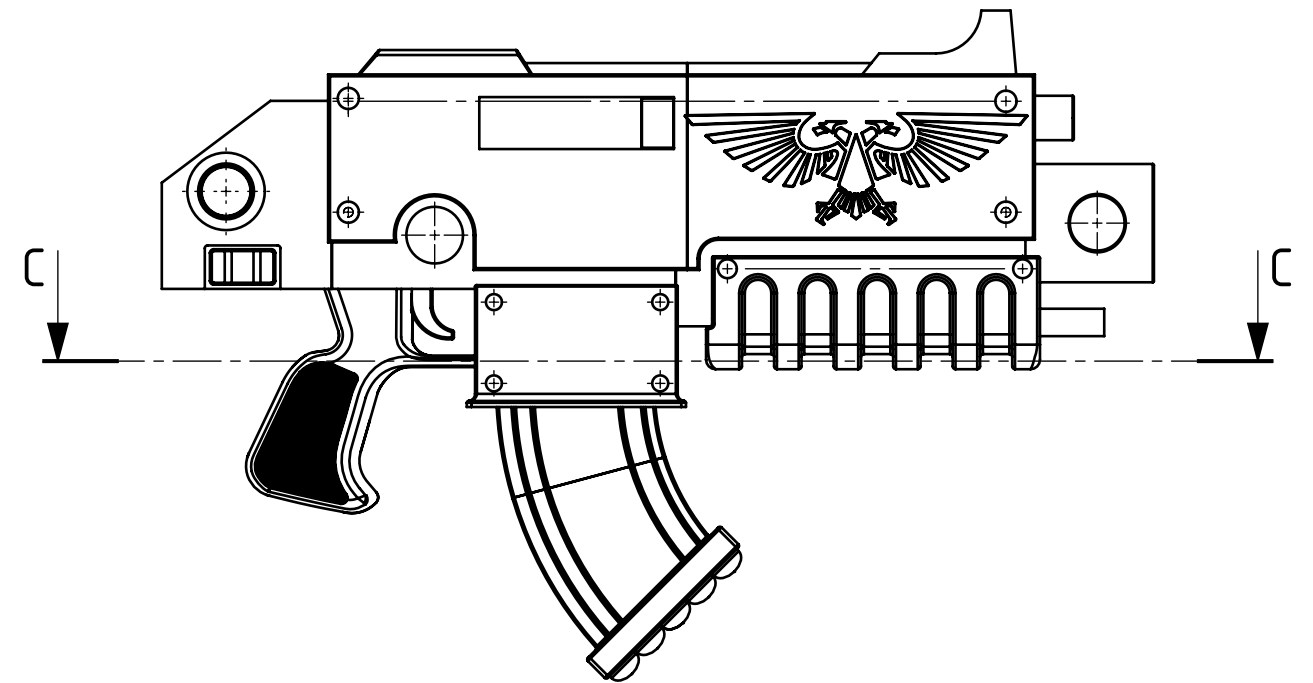


Ø 10mm x 170mm  
LONG GROUND ROD

POSITION OF 4 FITTING

SECTION D-D  
SCALE 1 : 3

SECTION D-D  
SCALE 1 : 3



SECTION C-C  
SCALE 1 : 5  
SCALE 1 : 4