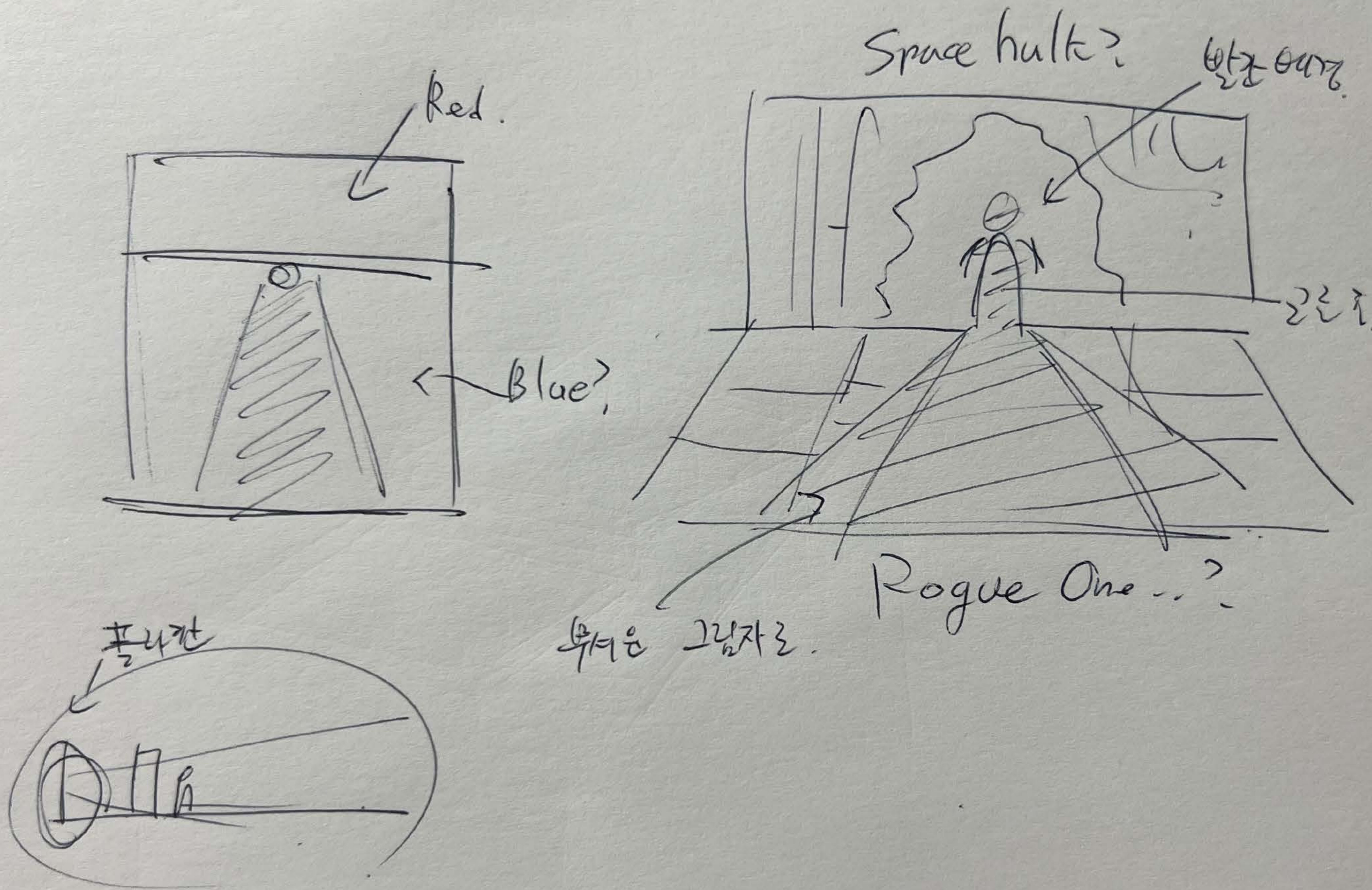




How to Make
KHORNE TERMINATOR

DESIGN



Today, I'm going to take a closer look at the process of the Khorn Terminator that I made for to the Golden Demon. This one is closer to show my work flow than usual guide.

I first thought about what kind of work to make. This time, I wanted to make a work that using high contrast of light that I don't usually use.

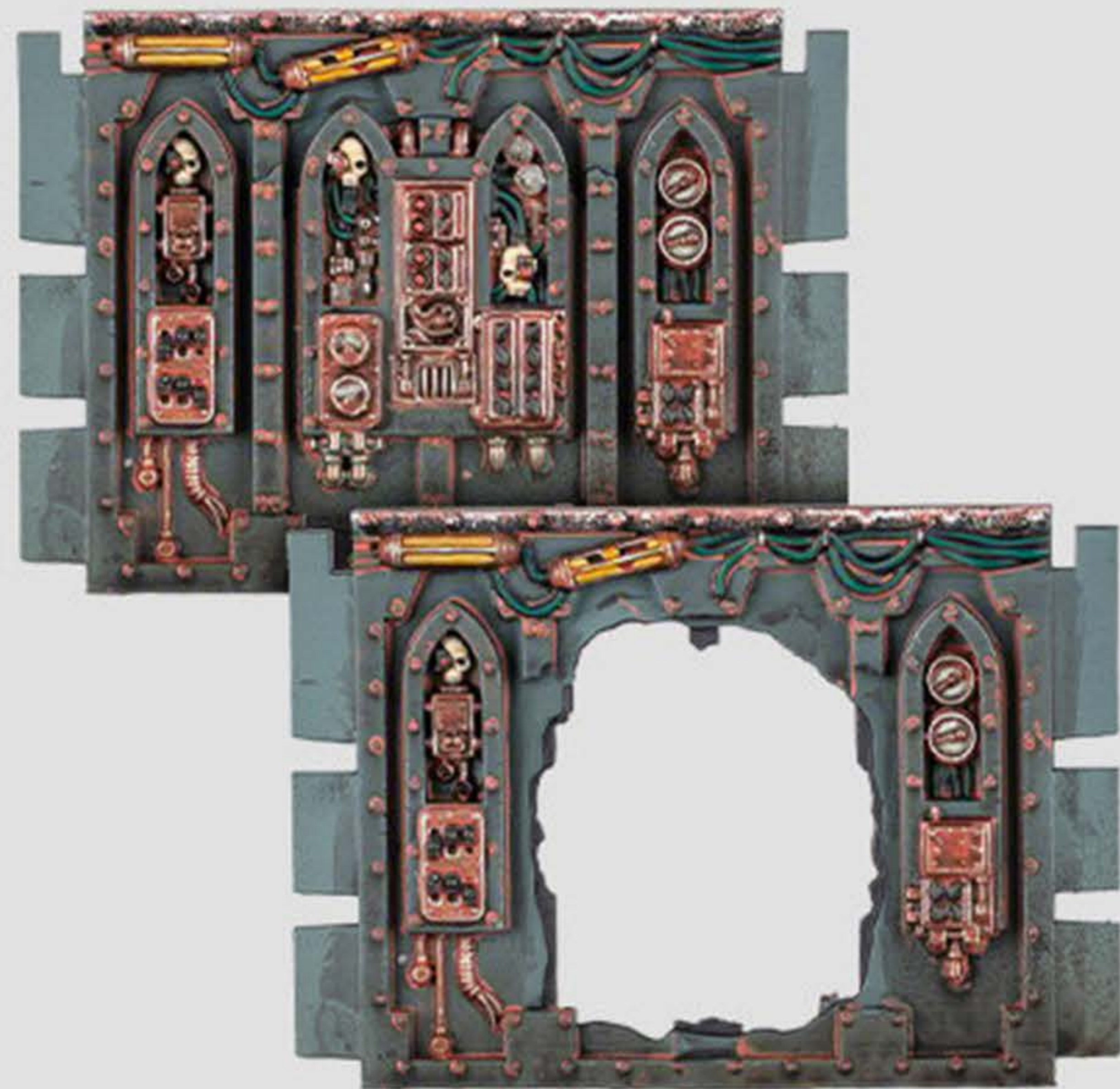
Inspired by DARTH VADER of Rogue One, I decided to express the image of Villain in the dark.



DESIGN

After much consideration, I decided to use the Khorn Terminator, which was sold as a limited edition.

I wanted to express the inside of the space hulk or ship, so I bought the Soulshackle set and the Necromunda tile set that is closest to the image.



DESIGN

I set the composition according to the shape I designed earlier and checked if the image I wanted was created by shining light with an actual phone light.

It not bad.



PAINTING



Let's start painting the model. To express a strong backlight, I started with AK 3rd Black Red on the front and AK 3rd Deep Red on the back.

For the face, AK 3rd Brown Rose + AK 3rd Tenbrous Grey were mixed to create a murky skin tone, and the darker the skin, the higher the proportion of Tenbrous Grey. For the brightening part, I applied Silver Grey to the previous paint.

Also, I mixed Deep Red and White Grey to express the area where the surrounding light source is reflected on the face in pink.

PAINTING



Now I'm going to paint the metals. That's where the worry started. This is because I need to paint metal which hidden in the shadow. If I paint it too dark, it doesn't feel like metal, and if I paint it too strong, it doesn't feel like it's in the dark.

I've been thinking about it for quite a while, but I haven't got an answer, so I'm just going straight. For gold, I tried to create a murky color by coloring AK 3rd Tenbrous Grey, AK 3rd Brown Base, AK 3rd Medium Sand, AK 3rd Silver Grey, etc. For silver, I used Tenbrous Grey, AK 3rd Dark Sea Grey, Silver Grey as usual.

I tried to paint the shadow much stronger than usual.

PAINTING



Unlike the front, the feeling from the side was good. I decided to continue painting, and I repeatedly painted Scalecor Inktense Red and Deep Red around my face to emphasize the color red much more.

PAINTING



I'm going to continue to paint the rest of it. To highlight the redness around the face, Scalecor Inktense Red is repeated to give the metal a red hue.

PAINTING



When I got some form, I turned off the front lights and took pictures as I intended. Fortunately, I liked the result quite a bit when the front light was turned off.

Since the front of the base is going to be long, I hope the lighting from the front on the site will be weak.

PAINTING



Turn to the side and check the feeling view from the side. The details didn't go up yet, but I really liked the feeling.

PAINTING



Now the model has some details, let's put it on the base again and compare the feeling. In addition, I made the background with a vivid red plate to represent the light source behind the model.

Because I wanted to express the light, not the wall, I focused on creating vivid colors without expressing details on the background panel itself.

PAINTING



It's time to paint the back of the model. Unlike the front, which tried to create a murky color, the back was painted in a similar way as usual. I tried to create a much clearer and brighter color. Its because when I actually place it, it's covered by the wall, so people can barely see the details.

PAINTING



Now finish painting the front to complete the model. It would have been nice to be able to produce a strong red color along the outline, but it was not easy because I lack of skills.

PAINTING

The model is almost finished, so it's time to paint the base. I purposely decided to paint it close to blue so that it could be a strong contrast to red.

I painted the entire base with AK 3rd Tenbrous Grey and then dry-brushed it with AK 3rd Ocean Blue.



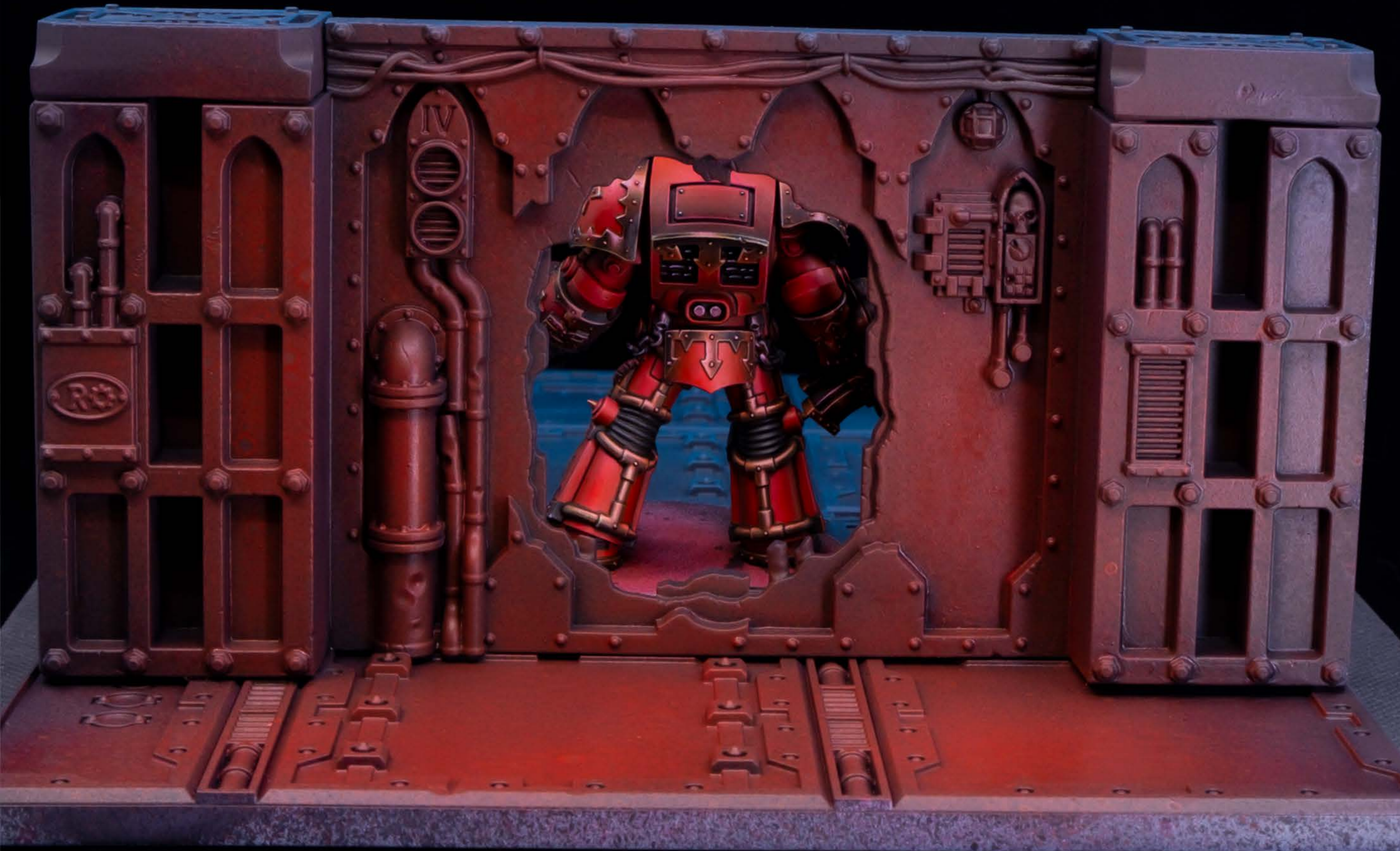
PAINTING



As I was painting the background, I thought the back of the model should be much more red. I diluted Scalecolor Inktense Red thinly and repeatedly painted the entire model. The aim was to give the gold part a red hue.

PAINTING

This is what we see on the back. You can't really see it because of the plastic plate, but I personally like the result.



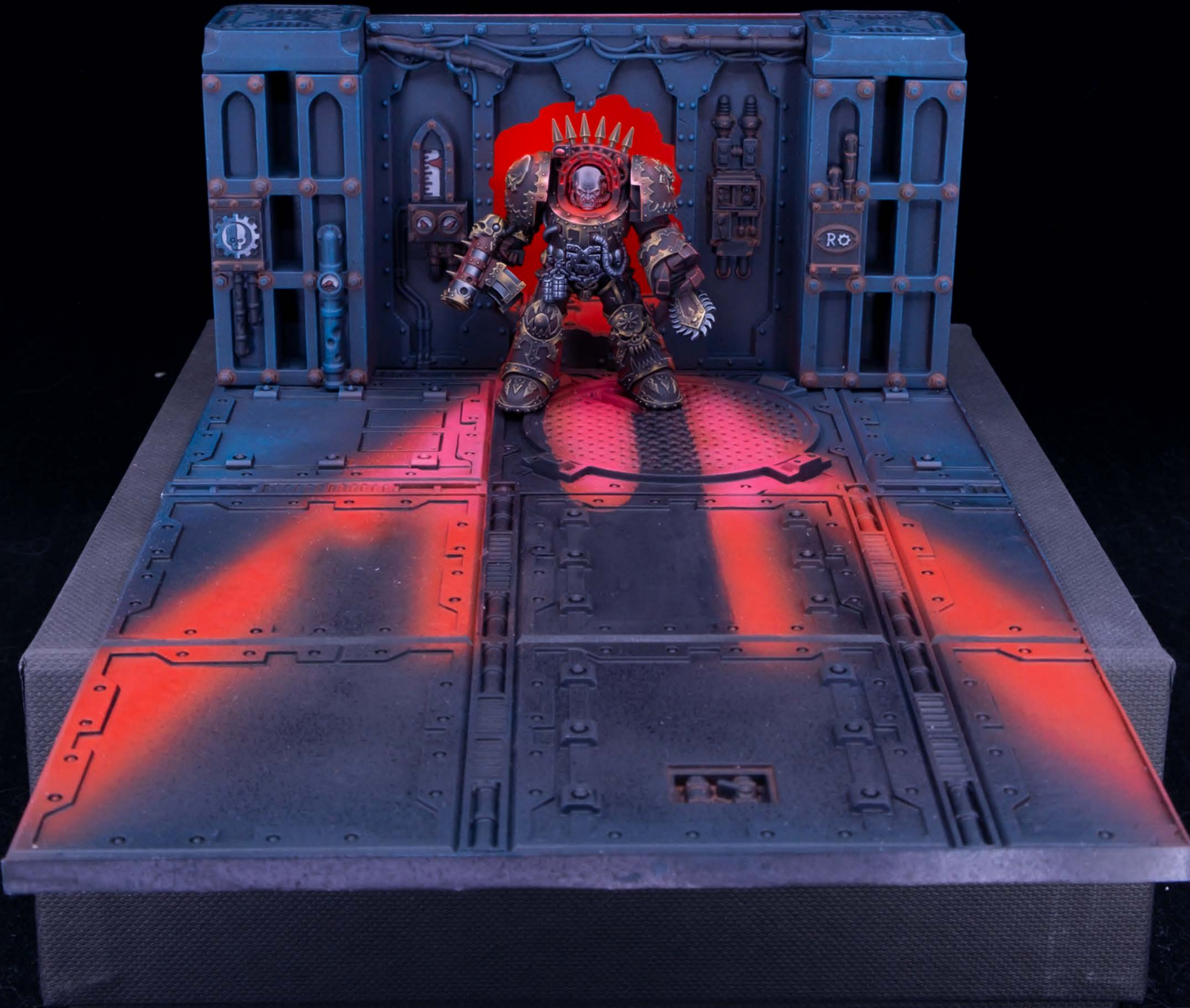


PAINTING

I used AK 3rd Deep Red and AK 3rd Tenbrous Grey to shape the light and shadow. It's made somewhat similar to the original painting.

PAINTING

Little by little the details of the background, adding more light and shadow. I painted the line clearly for the shadow close to the body, and I raised the color of pink to make the light closer to the body clearer.



PAINTING

Continue to paint the details of the background, express the rust with AK 3rd Deep Brown, and then use Inktense Red to capture the color of the floor. At the same time, I painted and placed the destroyed door.



PAINTING

I bought a tree block that will be the base on the Internet. It's a bit disappointing that it's a bit more rough than I thought.



PAINTING

After priming the tree in black, I attached the base that I worked on so far.



PAINTING

It's done. I did my best, but after finishing it, I'm not satisfying because I noticed a lot of shortcomings in many ways.



PAINTING

It looks like this from the side. I put a lot of effort into the red hallway wall, but it's a shame that I can't show you in pictures.

Please wish me luck! Thank you always.

