



MIDGE BRETON TOP

Sizes 18-34
with cup sizes A-H

5/8 inch (1.5 cm) seam allowances
are included on all pattern pieces.

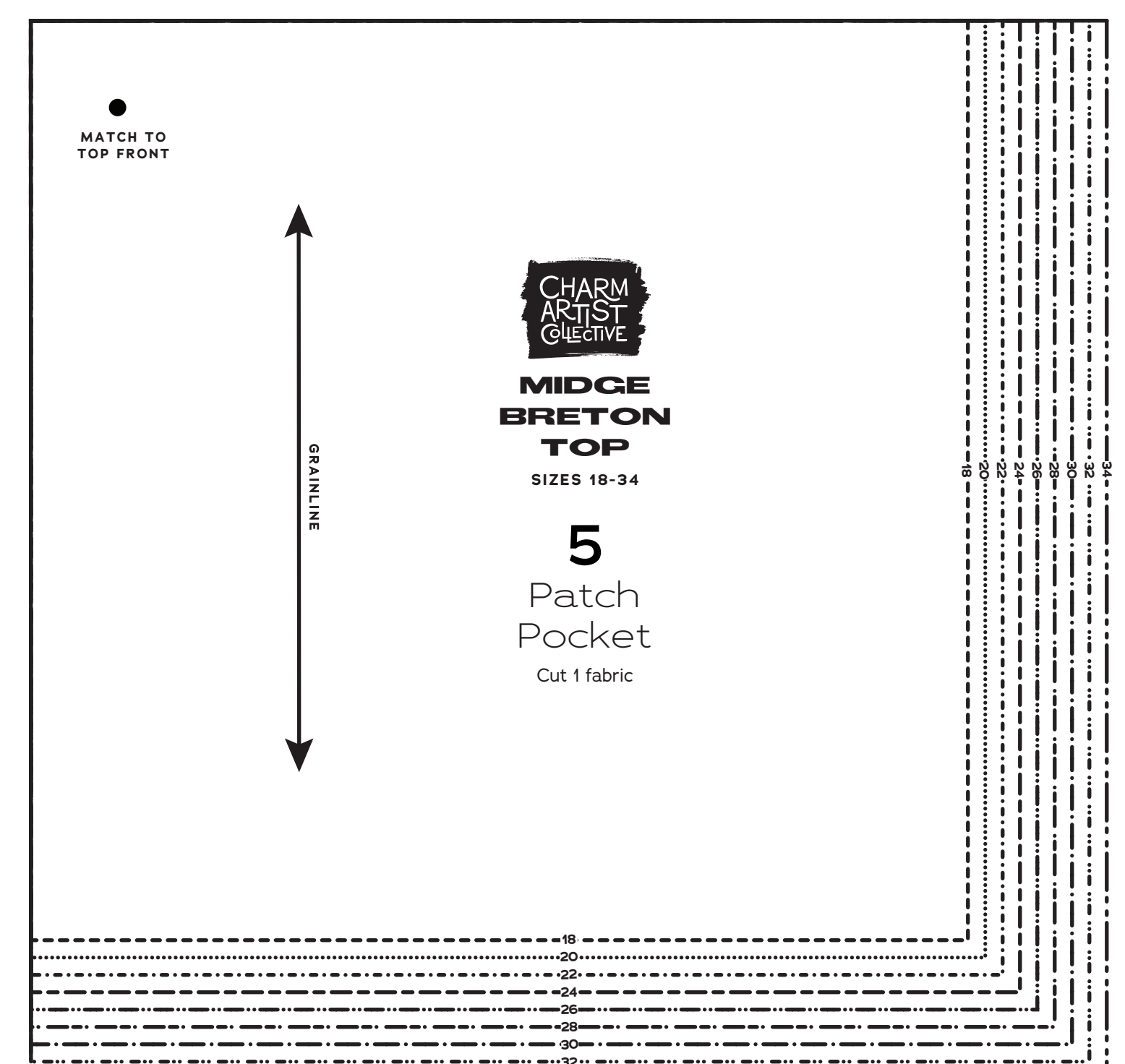
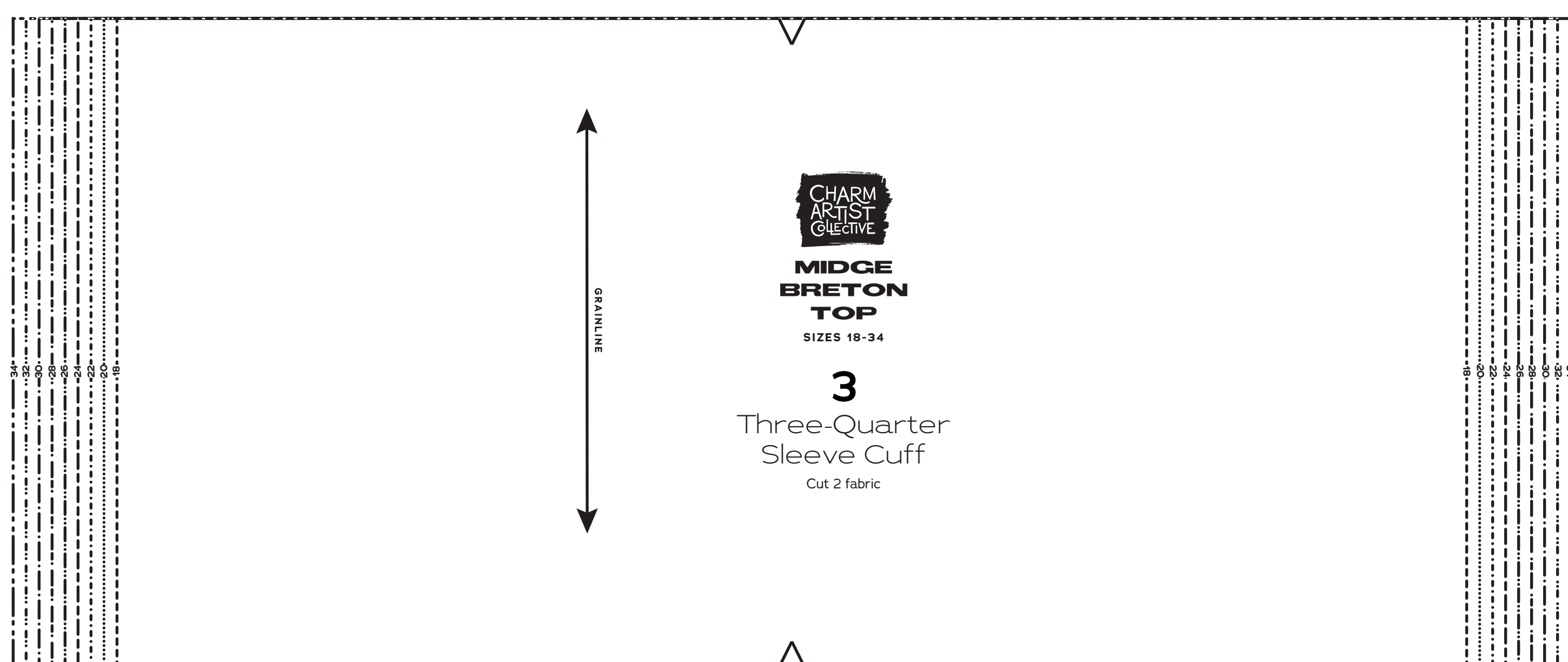
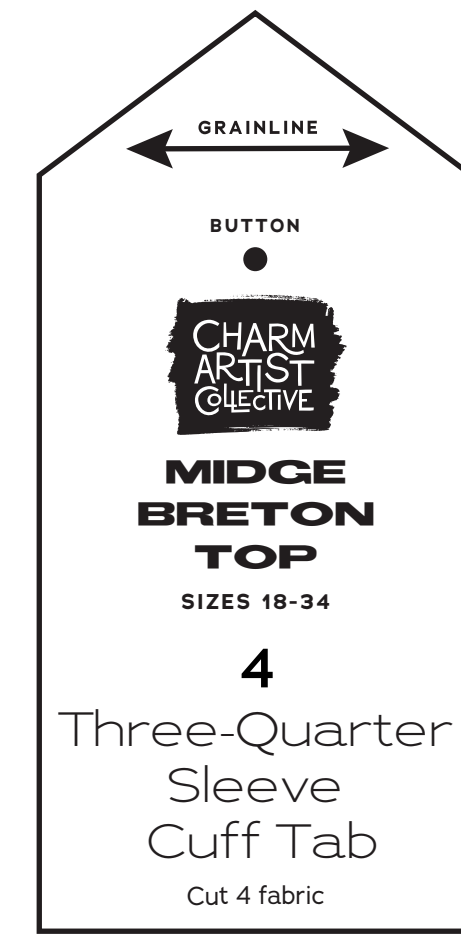
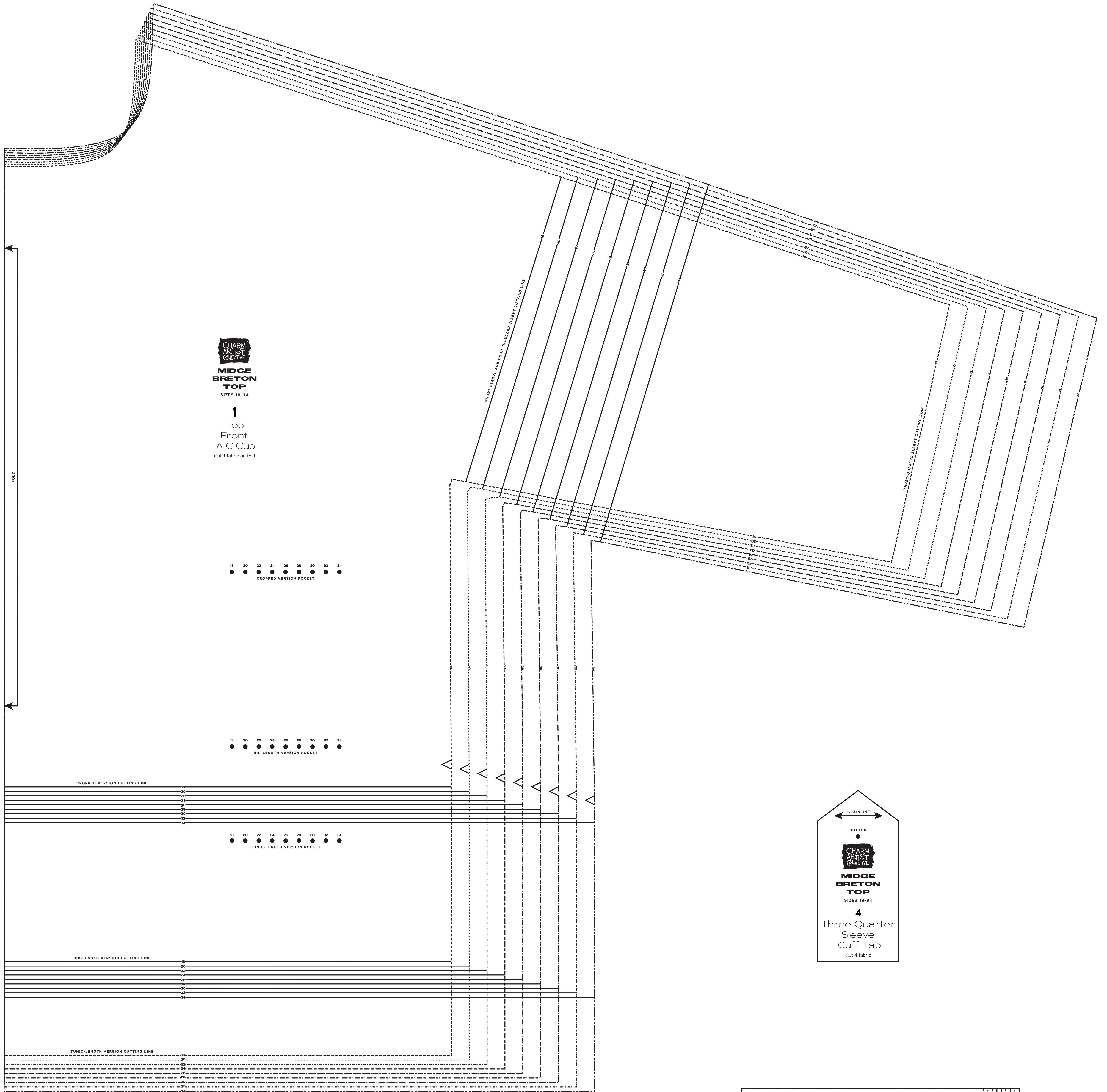
PAGE 1 OF 4

PATTERN PIECE INDEX
1 Top Front, A-C Cup
3 Three-Quarter Sleeve Cuff
4 Three-Quarter Sleeve Cuff Tab
5 Patch Pocket

**SIZE 18-34
PATTERN
SIZE KEY**
18
20
22
24
26
28
30
32
34

SYMBOL KEY
grainline arrow
match point/
placement mark

1" test
square





MIDGE BRETON TOP

Sizes 18-34
with cup sizes A-H

5/8 inch (1.5 cm) seam allowances
are included on all pattern pieces.

PAGE 2 OF 4

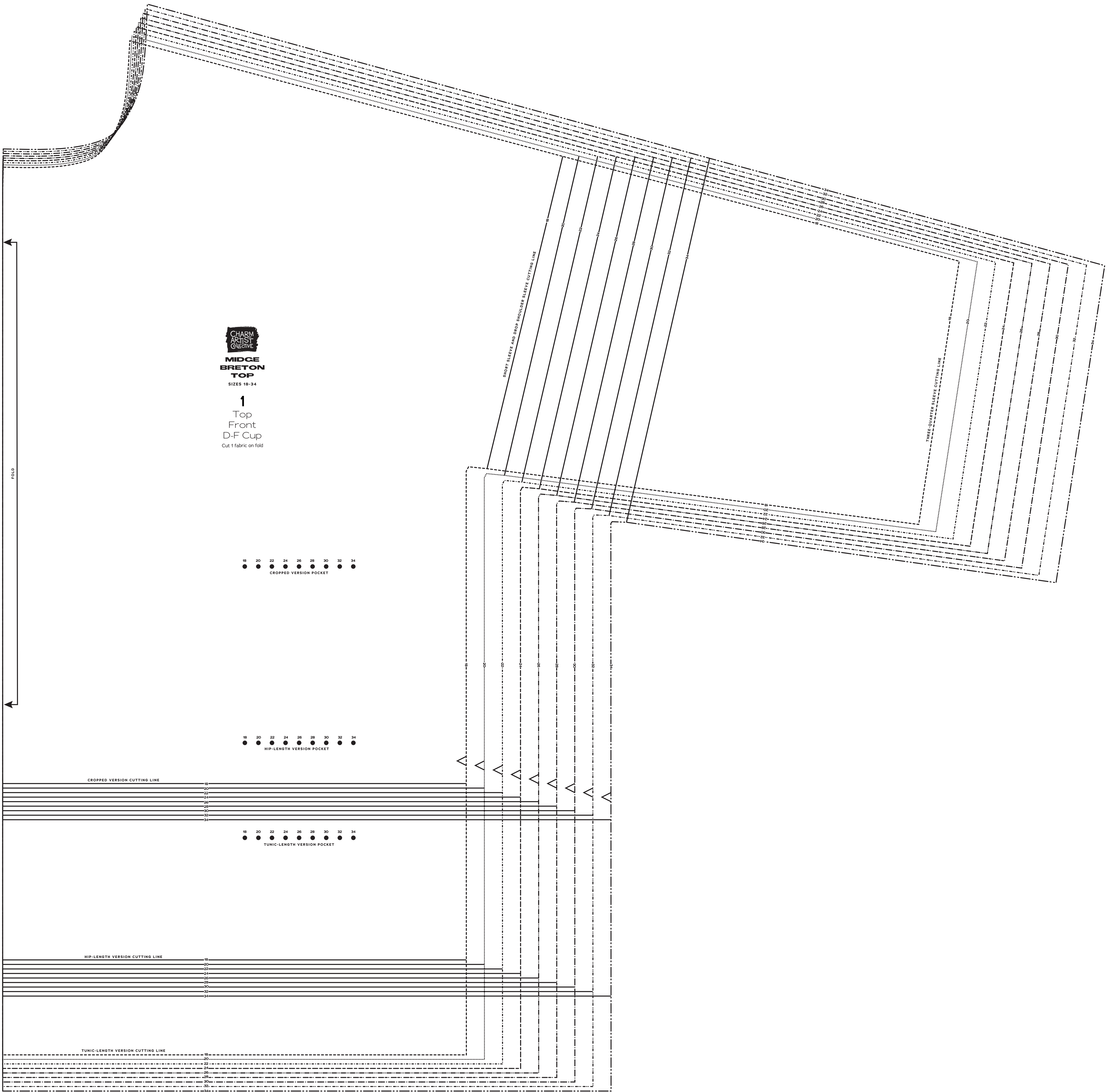
PATTERN PIECE INDEX
1 Top Front, D-F Cup

SIZE 18-34
PATTERN
SIZE KEY

18	-----
20	-----
22	-----
24	-----
26	-----
28	-----
30	-----
32	-----
34	-----

SYMBOL KEY
grainline arrow
←→
match point/
placement mark
●

1" test
square



MIDGE BRETON TOP

SIZES 18-34

1

Top Front
D-F Cup
Cut 1 fabric on fold



MIDGE BRETON TOP

Sizes 18-34
with cup sizes A-H

5/8 inch (1.5 cm) seam allowances
are included on all pattern pieces.

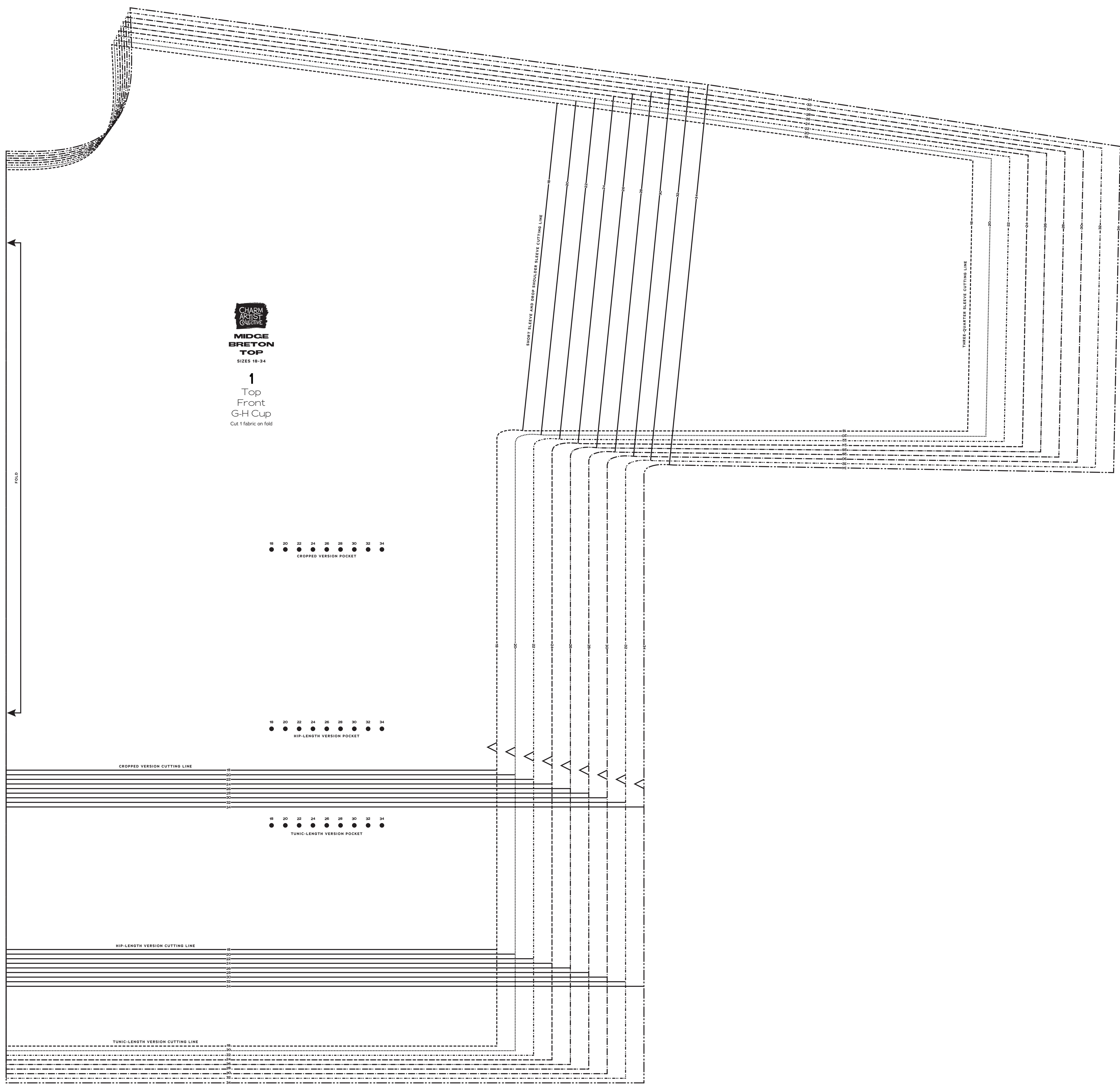
PAGE 3 OF 4

PATTERN PIECE INDEX
1 Top Front, G-H Cup

SIZE 18-34
PATTERN
SIZE KEY

18	-----
20	-----
22	-----
24	-----
26	-----
28	-----
30	-----
32	-----
34	-----

SYMBOL KEY
grainline arrow
match point/
placement mark



MIDGE BRETON TOP

SIZES 18-34
1
Top Front
G-H Cup
Cut: 1 fabric on fold

18 20 22 24 26 28 30 32 34
CROPPED VERSION POCKET

18 20 22 24 26 28 30 32 34
HIP-LENGTH VERSION POCKET

18 20 22 24 26 28 30 32 34
TUNIC-LENGTH VERSION POCKET



MIDGE BRETON TOP

Sizes 18-34
with cup sizes A-H

5/8 inch (1.5 cm) seam allowances
are included on all pattern pieces.

PAGE 4 OF 4

PATTERN PIECE INDEX
2 Top Back
6 Long Sleeve

SIZE 18-34
PATTERN
SIZE KEY
18
20
22
24
26
28
30
32
34

SYMBOL KEY
grainline arrow
match point/
placement mark

1" test
square

