

CHARM
ARTIST
COLLECTIVE

CHARLOTTE BERRET

A PATREON
EXCLUSIVE
PATTERN

© 2022 Charm Patterns by Gertie





I'm so excited to be the first guest designer in the Charm Artist Collective! This theme was just begging for a beret pattern, so I knew I would have to dig into my vault of vintage millinery inspiration for just the right thing. I'm pleased to present to you the Charlotte Beret, a feminine topper with a sculpted, face-framing shape and a sultry veil option. I've designed the pattern with a dart and shaped brim to give the beret its signature vintage tilted look. Make it in slouchy boiled wool for a Parisian artiste look, or try cotton velvet for the perfect little cocktail hat—especially when paired with the optional veil and bow.

This is a fabulous project for advanced beginners, but even the most expert sewist will find it a great addition to their rotation. (Who doesn't love a *Gentlemen Prefer Blondes* moment?) I love a chic, everyday staple, especially one that comes together quickly. I hope you love it as much as we do!

xoxo, Charlotte

ABOUT THE GUEST ARTIST

Charlotte Dymock has been interested in vintage fashion and its historical context for as long as she can remember. Having started sewing from vintage patterns to recreate and reimagine the looks she found in 1940s and '50s magazines, catalogs, and movies, more recently she has developed an interest in sewing techniques for vintage millinery to bring the whole-outfit vision to life. Find her on Instagram at @tuppencehapenny.



SIZING AND FIT NOTES

The Charlotte Beret is sized Small, Medium, and Large. There is some flexibility in fit, and all our models wore a size Medium. Consult the finished brim sizes below and then measure your head circumference, holding the measuring tape roughly where you plan to wear the beret.

FINISHED MEASUREMENTS

	Small	Medium	Large
Brim	22 ³ / ₈ in 56.8 cm	23 ³ / ₈ in 59.4 cm	24 ³ / ₈ in 61.9 cm

REQUIRED YARDAGE & CUTTING LAYOUTS

PATTERN PIECES

1. Beret Crown

Cut 1 fabric, 1 interfacing (optional)

2. Beret Brim

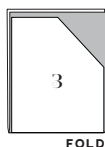
Cut 1 fabric, 1 interfacing (optional)

3. Veil (optional)

Cut 1 veiling on fold

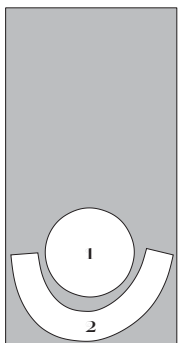
Veiling (3)

All sizes	
9-12 in	7/8 yd 0.8 m



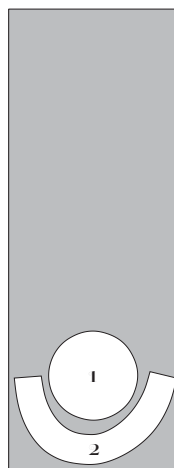
Beret fabric (1, 2)

All sizes	
45 in	3/4 yd
60 in	0.7 m



Beret interfacing (1, 2)

All sizes	
45 in	3/4 yd
60 in	0.7 m



SEWING INSTRUCTIONS

BEFORE SEWING

Transferring marks: Use dressmaker's tracing paper and a tracing wheel to transfer all pattern markings to the wrong side (WS) of your fabric. Mark pattern notches by snipping into the seam allowance with the tip of your scissors.

Seam finishing: If using a fray-prone fabric, you may wish to serge the raw edges of your beret pieces. Alternatively, pink, serge, or zigzag the seam allowances after sewing the seams of your hat.

NOTES

5/8-inch (in) (1.5 cm) seam allowances are included on all pattern pieces, unless otherwise noted.



MATERIALS & NOTIONS

- Beret fabric
- Thread to match fabric
- Fusible interfacing (optional, for a more structured beret)
- 1 yard 1-in-wide grosgrain or petersham ribbon to finish brim
- 1 yard 9- to 12-in-wide veiling (optional)
- 1 yard velvet ribbon for bow (optional)

RESOURCES

Here are some of the fabrics and supplies I used for the samples. I purchased many of my supplies in small shops on London's Goldhawk Road but have found similar online resources below. There are lots of places to purchase fabric, so this is solely a guide you can use as a reference:

[Red velvet beret](#)

[Red cotton velvet](#)

[Dotted 9-in veiling, pink with red dots](#)

[1-in velvet ribbon](#)

[1-in cream grosgrain ribbon](#)

[Blue velvet beret](#)

[Vintage black 12-in veiling](#)

[Cream wool beret](#)

[Cream boiled wool](#)

FABRIC NOTES

This pattern was designed for medium-weight wovens and stable knits, such as boiled wool, tweed, mohair, wool flannel, and boucle; wool knits; and cotton velvet.

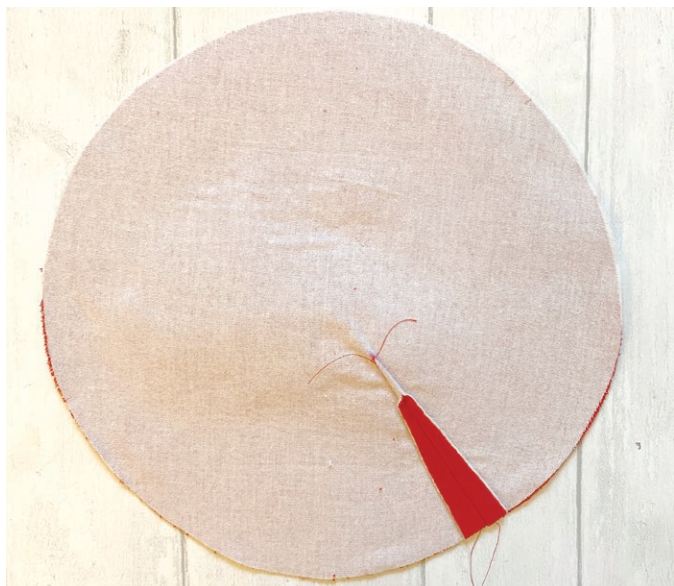
SEWING INSTRUCTIONS

Beret

1. Reinforce both pattern pieces with fusible interfacing (optional): apply fusible interfacing to Beret Crown (1) and Beret Brim (2), if desired. (Note: Fusible interfacing gives more structure in medium-weight wools or velvet; for a more relaxed look in boiled wool, you may wish to leave the beret un-interfaced.)



2. Sew dart in crown: bring dart legs right sides (RS) together, pinning along marked lines. Stitch along marked lines from dart base to dart point. Backstitch at the beginning but not at the end, leaving a thread tail a few inches long. Tie thread tails by hand. Cut down the center of the dart to reduce bulk. Press dart open.



3. Sew brim: pin brim RS together at center back. Stitch. Press seam allowances open.



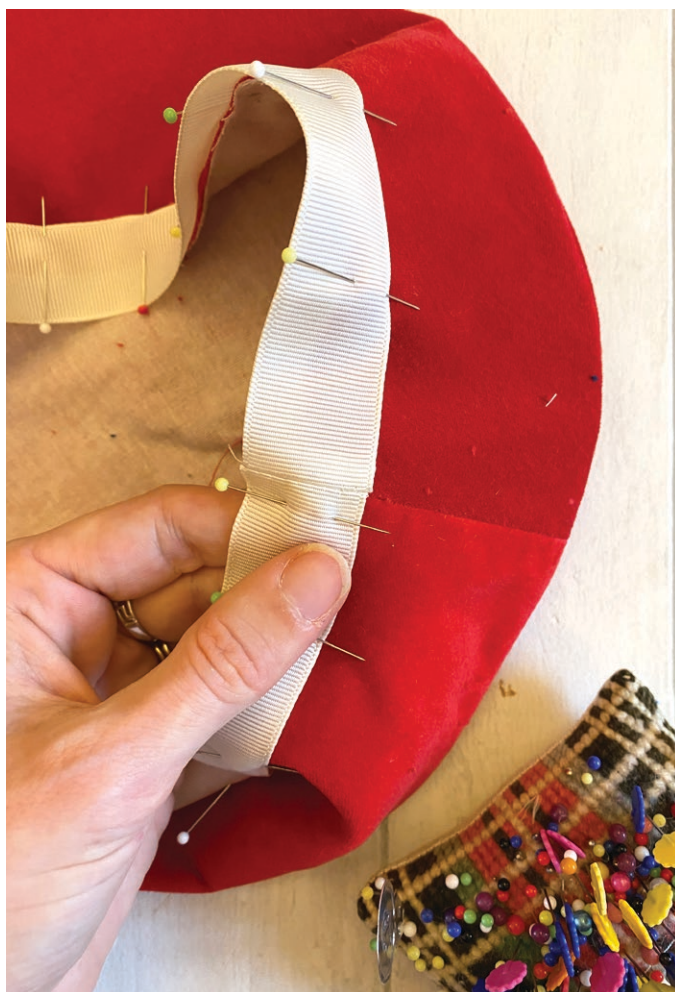
4. Sew crown to brim: pin crown RS together with brim, matching notches and dart on crown to center back seam on brim. Stitch. Trim seam allowance to 1/4 in (6 mm), notching or pinking to the stitching line if using a woven fabric. Press seam allowances open over a tailor's ham.



5. Prepare inner ribbon headband: cut a length of grosgrain or petersham ribbon according to the chart below. Pin ends of ribbon RS together. Stitch. Trim seam allowance to 1/4 in (6 mm) and press open.

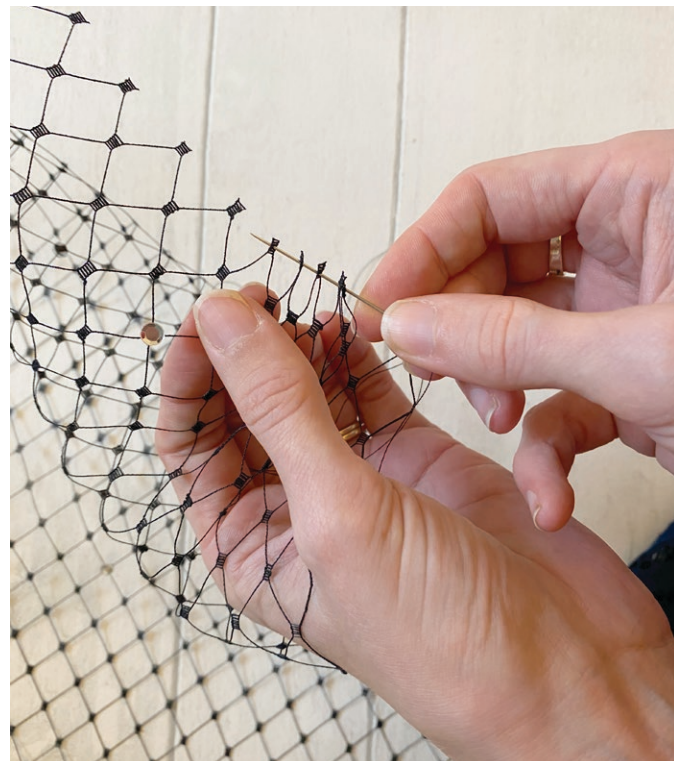
	Small	Medium	Large
Grosgrain Ribbon Length	23 ⁵ / ₈ in 60 cm	24 ⁵ / ₈ in 62.5 cm	25 ⁵ / ₈ in 65.1 cm

6. Apply inner ribbon headband: staystitch the inner edge of the brim using a 5/8-in (1.5 cm) seam allowance. Pin WS of grosgrain ribbon to RS of brim, having the ribbon just cover the staystitching. Stitch the ribbon in place, just next to the upper edge. Turn ribbon to inside of beret and press. Tack ribbon in place at center back.



Veiling (optional)

1. Gather the veiling: thread a hand-sewing needle and gather the angled sides and top of the veiling by stitching through the squares in the veiling (the spots connecting each diamond in the veil), and pulling the thread to draw up the gathers. Take a couple stitches through the gathered veiling to secure your thread.



2. Secure veiling to beret: without cutting the thread, tack the veiling in place on the crown at the point of the dart.



Ribbon bow (optional)

I used a 1-in-wide (2.5 cm) single-faced velvet ribbon for my bow.

1. Lay the ribbon flat, RS down, then take the ends and cross the tails in the center, making one slightly longer.



2. Take the longer tail and pass it behind the loop you've just made, then bring it back across the front.



3. Cut the tail at an angle, then pinch the center of the loops.



4. Take a short length of the leftover ribbon and tie it around the center of the bow, front to back, to form the knot.



5. Trim the ends of the knot (these are hidden when the ribbon is in place on the beret) and gently shape the loops of the bow.



6. Tack the bow over the gathers of the veiling, at the dart point on the crown.



Enjoy your chic new Charlotte Beret!

PATTERN PIECE LOCATION GUIDE

Here is a list to help you locate the pattern pieces on the letter-size tiled pages and A0 pattern sheets. The tiled pieces and A0 sheets are included as separate pdf files as part of this digital pattern.

PC#	Piece Name	Tiled	A0
1	Beret Crown	1-2, 4-5	1
2	Beret Brim	2-3, 5-6, 8	1
3	Veil (optional)	7-10	1

HOW TO USE THIS PATTERN

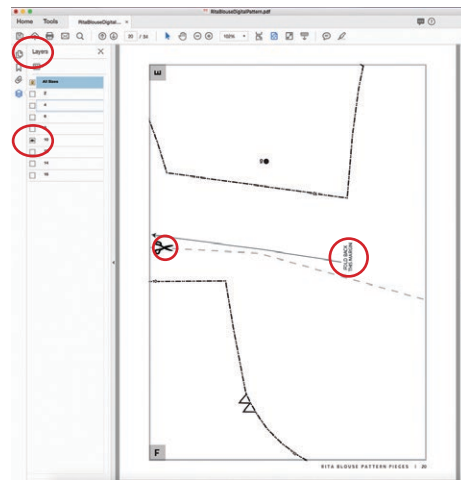
The pattern pieces are tiled so you can print them on Letter (8 1/2" x 11") or A4 size paper. You can also send the A0 pattern sheet PDF to a local or online printer (like www.pdfplotting.com) to print on large sheets (36" x 48" for U.S. or A0 for international).

This pattern includes size layers. To get the best results, open either the Tiled or A0 pattern pieces PDF in Acrobat Reader.

Open the Layers Palette (View> Show/Hide>Navigation Panes>Layers) and hide all of the layer(s) except for the ones you want to print by clicking

on the eye icon.

The All Sizes layer has general pattern information and will always print.



WORKING WITH THE TILED PIECES

Go to File>Print and change the page range to the pages you need for the pieces you've chosen (see Pattern Pieces Printing Index). Make sure the Page Sizing settings to 100% or Actual Size. Test this after printing by measuring the 1" test box on the first page of the bodice pattern pieces.

Cut apart any pattern pieces that share a page by cutting on the gray long dashed lines. Then fold back the page margins on each page as directed.

Tape the pages together, butting up the folded page edges with the gray margin lines, matching up the letters in gray boxes.

MORE FROM GERTIE

On Instagram: Stay in the loop and get inspired.

On YouTube: Learn beginner and advanced sewing skills and techniques through my tutorials, watch episodes of my Gertie's World series, and join regular live streams.

On Patreon: Access monthly patterns and tutorial videos.

At CharmPatterns.com: Shop my sewing patterns and accessories.

