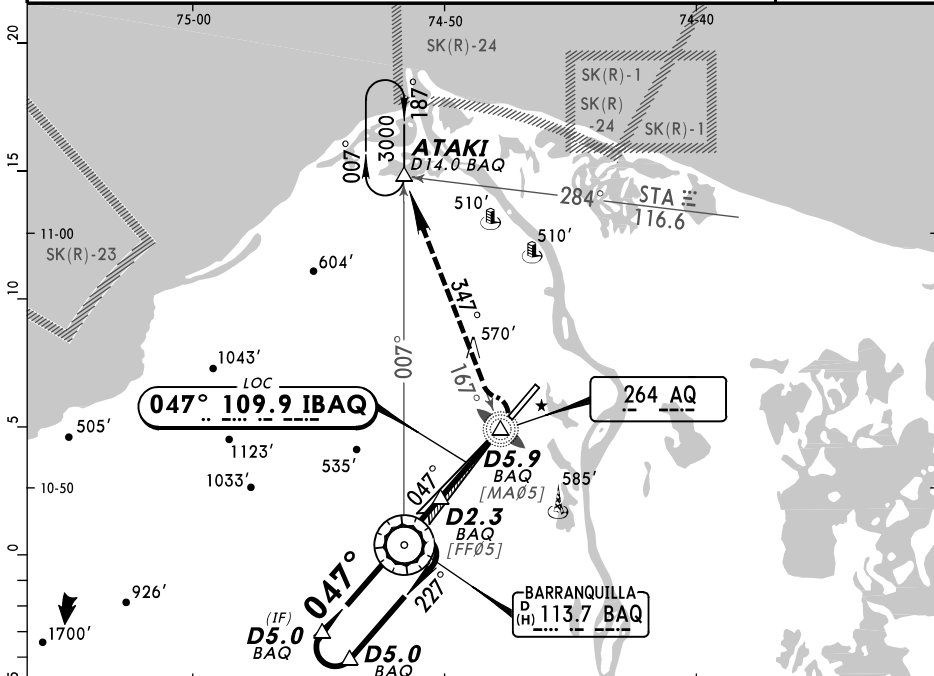
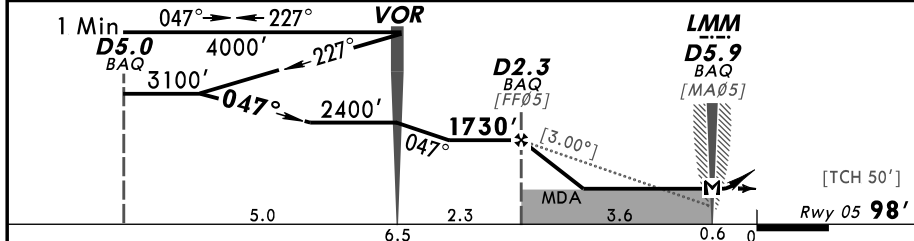


SKBQ/BAQ **JEPESEN BARRANQUILLA, COLOMBIA**
ERNESTO CORTISOZ 26 OCT 12 **11-1-1** **CAT A, B & C** **LOC Rwy 05**

ATIS 113.7		BARRANQUILLA Approach 119.1		CORTISOZ Tower 118.1		Ground 121.9	
LOC IBAQ 109.9	Final Apch Crs 047°	Minimum Alt D2.3 BAQ 1730' (1632')	MDA(H) 600' (502')	Apt Elev 98' Rwy 05 98'		2800'	
MISSED APCH: Turn LEFT to intercept 347° bearing from AQ NDB to ATAKI INT holding at 3000'.							
Alt Set: IN (hPa on req)			Trans level: FL 190		Trans alt: 18000'		MSA BAQ VOR
1. BAQ DME required.							



BAQ DME	1.0	2.3	3.0	4.0	5.0	5.9
ALTITUDE	1884'	1730'	1508'	1192'	877'	600'



Gnd speed-Kts	70	90	100	120	140	160	ALSF-I	3000'	AQ	ATAKI
Descent Gradient 5.2% or Descent Angle [3.00°]	372	478	531	637	743	849	PAPI PAPI	LT	to 264	
MAP at D5.9 BAQ or FAF to MAP	3.6	3:05	2:24	2:10	1:48	1:33	1:21		347°	

STRAIGHT-IN LANDING RWY 05					CIRCLE-TO-LAND					
MDA(H) 600' (502')										
ALS out										
A	2.7 km					REFER TO PROCEDURES 13-2 (VOR E Rwy 23) OR 13-3 (VOR J Rwy 23)				
B										
C										
D	NA									

CHANGES: Profile altitude.

© JEPESEN, 2012. ALL RIGHTS RESERVED.

SKBQ/BAQ

JEPESEN BARRANQUILLA, COLOMBIA

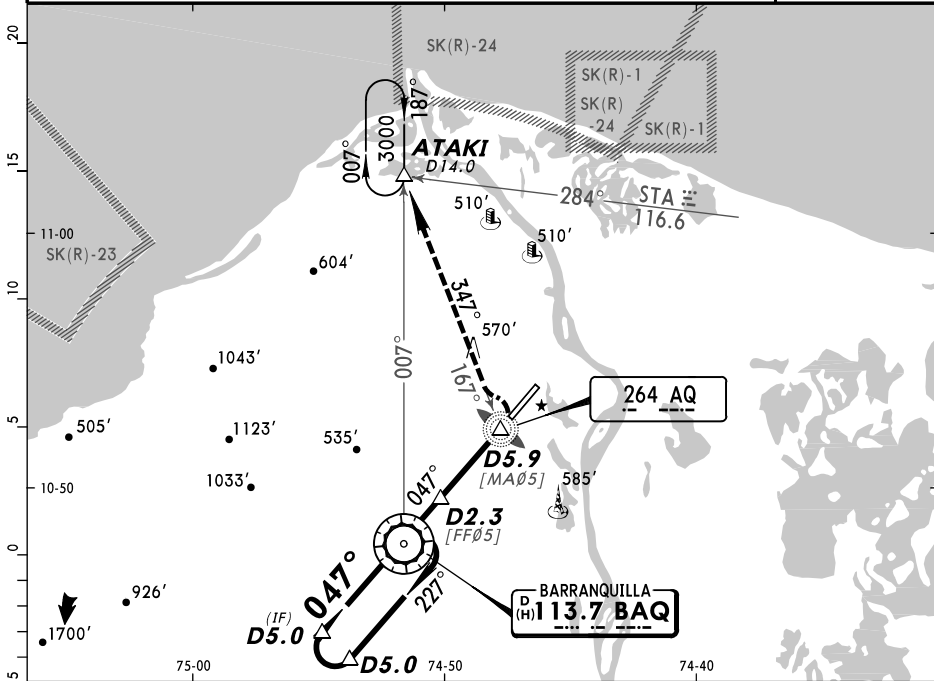
ERNESTO CORTISOZ

26 OCT 12 13-1-1

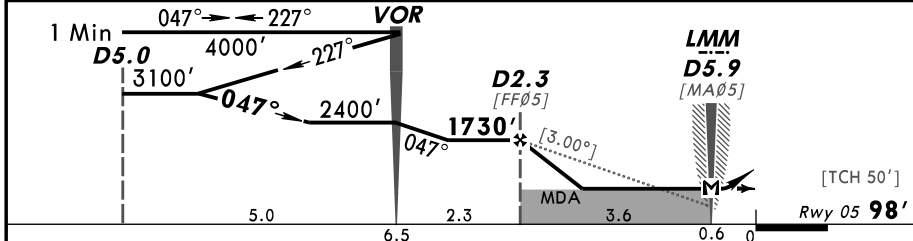
CAT A, B & C

VOR Rwy 05

ATIS 113.7		BARRANQUILLA Approach 119.1		CORTISOZ Tower 118.1		Ground 121.9	
VOR BAQ 113.7		Final Apch Crs 047°		Minimum Alt D2.3 1730' (1632')		MDA(H) 600' (502')	
						Apt Elev 98' Rwy 05 98'	
MISSED APCH: Turn LEFT to intercept 347° bearing from AQ NDB to ATAKI INT holding at 3000'.							2800'
Alt Set: IN (hPa on req) Trans level: FL 190 Trans alt: 18000'							
1. BAQ DME required.							MSA BAQ VOR



BAQ DME	1.0	2.3	3.0	4.0	5.0	5.9
ALTITUDE	1884'	1730'	1508'	1192'	877'	600'



Gnd speed-Kts	70	90	100	120	140	160	ALSF-I	3000'	AQ	ATAKI
Descent Gradient 5.2% or Descent Angle [3.00°]	372	478	531	637	743	849	PAPI PAPI	LT	to 264	347°
MAP at D5.9 or FAF to MAP	3.6	3:05	2:24	2:10	1:48	1:33	1:21			

STRAIGHT-IN LANDING RWY 05						CIRCLE-TO-LAND					
MDA(H) 600' (502')						ALS out					

A	2.7 km						REFER TO PROCEDURES 13-2 (VOR E Rwy 23) OR 13-3 (VOR J Rwy 23)					
B												
C												
D	NA											

CHANGES: Profile altitude.

© JEPESEN, 2012. ALL RIGHTS RESERVED.