



CHARM
ARTIST
COLLECTIVE

A PATREON
EXCLUSIVE
PATTERN



LAS VEGAS HALTER TOP

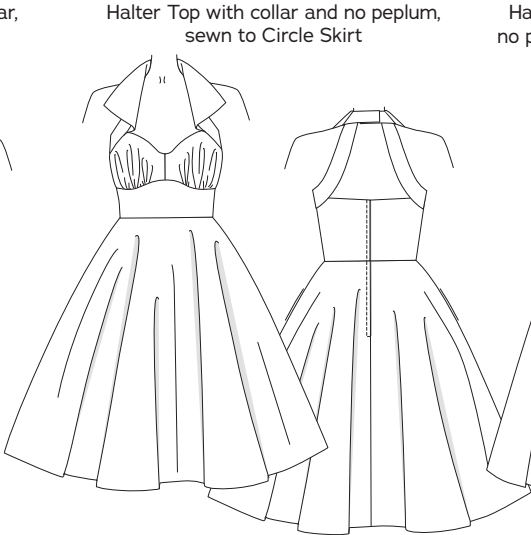
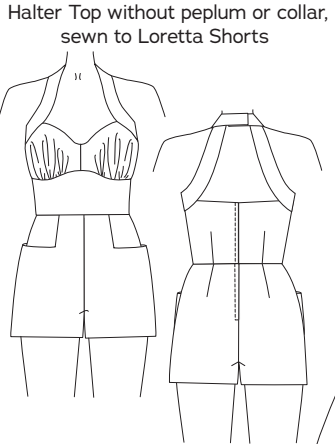
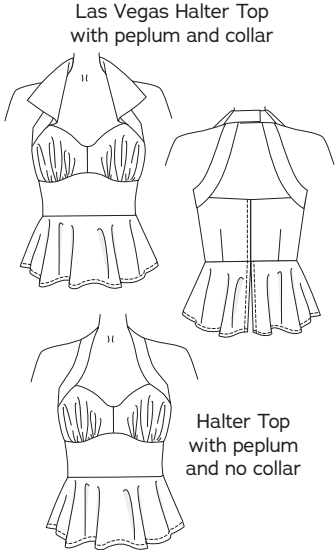


Swing through summer with the flirty and fun Las Vegas Halter top! With a sweetheart neckline, clever halter straps, and a bold collar, this design will have you baring your shoulders to celebrate the hottest time of the year. Make the peplum top for wearing untucked, or add our Circle Skirt or the Loretta Shorts to create an easy-breezy summertime outfit. Don't forget to watch the video to see how it all comes together!

xoxo, *Gertie*



- KEY SKILLS**
- Working with a separating zipper
 - Clean finishing a bodice-and-lining combo around a zipper
 - Sewing a swing tack



SIZE CHART

The Las Vegas Halter Top is sized in women's US 2–20 and 18–34, A–H cup sizes. Please use the chart below to pick your size. The High Bust measurement should be taken above your breasts and the Full Bust measurement should be taken at the fullest part of your bustline. Take the waist measurement at the smallest part of your torso. Note that it is best to choose your size by your bust measurements (and add or remove from the side seams at the waist if needed).

If you're in our Artist, Beat Princess, or Bohemian Princess tiers, make sure to check out our first fit clinic from February to learn more about measuring yourself, choosing a size, and making fit adjustments.

Not sure which size range to choose? Read more about our [new 18-34 size range here!](#)

SIZES 2-20	2	4	6	8	10	12	14	16	18	20
High Bust	29 in 73.7 cm	31 in 78.7 cm	33 in 83.8 cm	35 in 88.9 cm	37 in 94 cm	39 in 99 cm	41 in 104.1 cm	43 in 109.2 cm	45 in 114.3 cm	47 in 119.4 cm
Bust A cup	30.5 in 77.5 cm	32.5 in 82.5 cm	34.5 in 87.6 cm	36.5 in 92.7 cm	38.5 in 97.8 cm	40.5 in 102.9 cm	42.5 in 108 cm	44.5 in 113 cm	46.5 in 118.1 cm	48.5 in 123.2 cm
Bust B/C cup	31 in 78.7 cm	33 in 83.8 cm	35 in 88.9 cm	37 in 94 cm	39 in 99 cm	41 in 104.1 cm	43 in 109.2 cm	45 in 114.3 cm	47 in 119.4 cm	49 in 124.5 cm
Bust D/DD cup	32 in 81.3 cm	34 in 86.4 cm	36 in 91.4 cm	38 in 96.5 cm	40 in 101.6 cm	42 in 106.7 cm	44 in 111.8 cm	46 in 116.8 cm	48 in 121.9 cm	50 in 127 cm
Bust F/G cup	33 in 83.8 cm	35 in 88.9 cm	37 in 94 cm	39 in 99 cm	41 in 104.1 cm	43 in 109.2 cm	45 in 114.3 cm	47 in 119.4 cm	49 in 124.5 cm	51 in 129.5 cm
Bust H cup	34 in 86.4 cm	36 in 91.4 cm	38 in 96.5 cm	40 in 101.6 cm	42 in 106.7 cm	44 in 111.8 cm	46 in 116.8 cm	48 in 121.9 cm	50 in 127 cm	52 in 132.1 cm
Waist	24 in 61 cm	26 in 66 cm	28 in 71.1 cm	30 in 76.2 cm	32 in 81.3 cm	34 in 86.4 cm	36 in 91.4 cm	38 in 96.5 cm	40 in 101.6 cm	42 in 106.7 cm
Hips	36 in 91.4 cm	38 in 96.5 cm	40 in 101.6 cm	42 in 106.7 cm	44 in 111.8 cm	46 in 116.8 cm	48 in 121.9 cm	50 in 127 cm	52 in 132.1 cm	54 in 137.2 cm

SIZES 18-34	18	20	22	24	26	28	30	32	34
High Bust	39.5 in 100.3 cm	41.5 in 105.4 cm	43.5 in 110.5 cm	45.5 in 115.6 cm	47.5 in 120.7 cm	49.5 in 125.7 cm	51.5 in 130.8 cm	53.5 in 135.9 cm	55.5 in 141 cm
Bust A cup	42.5 in 108 cm	44.5 in 113 cm	46.5 in 118.1 cm	48.5 in 123.2 cm	50.5 in 128.3 cm	52.5 in 133.4 cm	54.5 in 138.4 cm	56.5 in 143.5 cm	58.5 in 148.6 cm
Bust B/C cup	43 in 109.2 cm	45 in 114.3 cm	47 in 119.4 cm	49 in 124.5 cm	51 in 129.5 cm	53 in 134.6 cm	55 in 139.7 cm	57 in 144.8 cm	59 in 149.9 cm
Bust D/DD cup	44 in 111.8 cm	46 in 116.8 cm	48 in 121.9 cm	50 in 127 cm	52 in 132.1 cm	54 in 137.2 cm	56 in 142.2 cm	58 in 147.3 cm	60 in 152.4 cm
Bust F/G cup	45 in 114.3 cm	47 in 119.4 cm	49 in 124.5 cm	51 in 129.5 cm	53 in 134.6 cm	55 in 139.7 cm	57 in 144.8 cm	59 in 149.9 cm	61 in 154.9 cm
Bust H cup	46 in 116.8 cm	48 in 121.9 cm	50 in 127 cm	52 in 132.1 cm	54 in 137.2 cm	56 in 142.2 cm	58 in 147.3 cm	60 in 152.4 cm	62 in 157.5 cm
Waist	40 in 101.6 cm	42 in 106.7 cm	44 in 111.8 cm	46 in 116.8 cm	48 in 121.9 cm	50 in 127 cm	52 in 132.1 cm	54 in 137.2 cm	56 in 142.2 cm
Hips	48 in 121.9 cm	50 in 127 cm	52 in 132.1 cm	54 in 137.2 cm	56 in 142.2 cm	58 in 147.3 cm	60 in 152.4 cm	62 in 157.5 cm	64 in 162.6 cm

FABRIC NOTES

We recommend imitation leathers like pleather and light- to medium-weight wovens: cottons like sateen, chambray, shirting, lightweight twill, and broadcloth; and linen and linen blends. Stretch wovens are possible, but knit fabrics are not recommended for this design.

Lining: light- to medium-weight cottons and lining fabrics.

MATERIALS & NOTIONS

- Fabric for top
- Thread to match fabric
- Lining fabric
- Fusible interfacing
- 10-inch (in) separating zipper
- Two hook-and-bar closures

RESOURCES

Here are some of the fabrics and supplies I used for the samples and in the video tutorial. There are lots of places to purchase fabric, so this is solely a guide you can use as a reference:

[Stretch Pleather](#)

(Gertie's Halter Top, paired with Jane Set pants)

[White Stretch Twill](#)

(Gertie's Halter Dress, made with Charm Circle Skirt)

[Rhinestone Iron-on](#)

[Applique Transfer](#)

(used ones similar to these for Gertie's Halter Dress)

[Stretch Cherry Sateen](#)

(Susie's Halter Top, paired with Stanwyck Skirt)

[Strawberry Broadcloth](#)

(Gertie's Romper, made with Loretta Shorts)

[Red Linen Rayon Blend](#)

(Gertie's Romper, contrast halter straps)

FIT NOTES

The Las Vegas Halter Top is a fitted halter top with a flared peplum. The top has 1/2 to 3/2 in (3.8 to 8.9 cm) of ease in the bust and 1/2 to 1 in (1.3 to 2.5 cm) of ease in the waist.

FINISHED MEASUREMENTS

Sizes 2-20	2	4	6	8	10	12	14	16	18	20
Bust A	32 in 81.3 cm	34 in 86.4 cm	36 in 91.4 cm	38 in 96.5 cm	40 in 101.6 cm	42 in 106.7 cm	44 in 111.8 cm	46 in 116.8 cm	48 in 121.9 cm	50 in 127 cm
Bust B/C	32.5 in 82.6 cm	34.5 in 87.6 cm	36.5 in 92.7 cm	38.5 in 97.8 cm	40.5 in 102.9 cm	42.5 in 108 cm	44.5 in 113 cm	46.5 in 118.1 cm	48.5 in 123.2 cm	50.5 in 128.3 cm
Bust D/DD	33.5 in 85.1 cm	35.5 in 90.2 cm	37.5 in 95.3 cm	39.5 in 100.3 cm	41.5 in 105.4 cm	43.5 in 110.5 cm	45.5 in 115.6 cm	47.5 in 120.7 cm	49.5 in 125.7 cm	51.5 in 130.8 cm
Bust F/G	34.5 in 87.6 cm	36.5 in 92.7 cm	38.5 in 97.8 cm	40.5 in 102.9 cm	42.5 in 108 cm	44.5 in 113 cm	46.5 in 118.1 cm	48.5 in 123.2 cm	50.5 in 128.3 cm	52.5 in 133.4 cm
Bust H	35.5 in 90.2 cm	37.5 in 95.3 cm	39.5 in 100.3 cm	41.5 in 105.4 cm	43.5 in 110.5 cm	45.5 in 115.6 cm	47.5 in 120.7 cm	49.5 in 125.7 cm	51.5 in 130.8 cm	53.5 in 135.9 cm
Waist	24.5 in 62.2 cm	26.5 in 67.3 cm	28.5 in 72.4 cm	30.5 in 77.5 cm	32.5 in 82.6 cm	34.5 in 87.6 cm	36.5 in 92.7 cm	38.5 in 97.8 cm	40.5 in 102.9 cm	42.5 in 108 cm
CF Length without peplum	7.88 in 20 cm	8.13 in 20.6 cm	8.38 in 21.3 cm	8.63 in 21.9 cm	8.88 in 22.5 cm	9.13 in 23.2 cm	9.38 in 23.8 cm	9.63 in 24.5 cm	9.88 in 25.1 cm	10.13 in 25.7 cm
CF Length with peplum	14.61 in 37.1 cm	15 in 38.1 cm	15.38 in 39.1 cm	15.75 in 40 cm	16.13 in 41 cm	16.5 in 41.9 cm	16.88 in 42.9 cm	17.25 in 43.8 cm	17.63 in 44.8 cm	18 in 45.7 cm

Sizes 18-34	18	20	22	24	26	28	30	32	34
Bust A/B	46 in 116.8 cm	48 in 121.9 cm	50 in 127 cm	52 in 132.1 cm	54 in 137.2 cm	56 in 142.2 cm	58 in 147.3 cm	60 in 152.4 cm	62 in 157.5 cm
Bust C	46.5 in 118.1 cm	48.5 in 123.2 cm	50.5 in 128.3 cm	52.5 in 133.4 cm	54.5 in 138.4 cm	56.5 in 143.5 cm	58.5 in 148.6 cm	60.5 in 153.7 cm	62.5 in 158.8 cm
Bust D/DD	47.5 in 120.7 cm	49.5 in 125.7 cm	51.5 in 130.8 cm	53.5 in 135.9 cm	55.5 in 141 cm	57.5 in 146.1 cm	59.5 in 151.1 cm	61.5 in 156.2 cm	63.5 in 161.3 cm
Bust F/G	48.5 in 123.2 cm	50.5 in 128.3 cm	52.5 in 133.4 cm	54.5 in 138.4 cm	56.5 in 143.5 cm	58.5 in 148.6 cm	60.5 in 153.7 cm	62.5 in 158.8 cm	64.5 in 163.8 cm
Bust H	49.5 in 125.7 cm	51.5 in 130.8 cm	53.5 in 135.9 cm	55.5 in 141 cm	57.5 in 146.1 cm	59.5 in 151.1 cm	61.5 in 156.2 cm	63.5 in 161.3 cm	65.5 in 166.4 cm
Waist	41 in 104.1 cm	43 in 109.2 cm	45 in 114.3 cm	47 in 119.4 cm	49 in 124.5 cm	51 in 129.5 cm	53 in 134.6 cm	55 in 139.7 cm	57 in 144.8 cm
CF Length without peplum (A/B cup)	9.25 in 23.5 cm	9.5 in 24.1 cm	9.75 in 24.8 cm	10 in 25.4 cm	10.25 in 26 cm	10.5 in 26.7 cm	10.75 in 27.3 cm	11 in 27.9 cm	11.25 in 28.6 cm
CF Length without peplum (C-H cups)	9.75 in 24.8 cm	10 in 25.4 cm	10.25 in 26 cm	10.5 in 26.7 cm	10.75 in 27.3 cm	11 in 27.9 cm	11.25 in 28.6 cm	11.5 in 29.2 cm	11.75 in 29.8 cm
CF Length with peplum (A/B cup)	16.88 in 42.9 cm	17.25 in 43.8 cm	17.63 in 44.8 cm	18 in 45.7 cm	18.38 in 46.7 cm	18.75 in 47.6 cm	19.13 in 48.6 cm	19.5 in 49.5 cm	19.88 in 50.5 cm
CF Length with peplum (C-H cups)	17.38 in 44.1 cm	17.75 in 45.1 cm	18.13 in 46 cm	18.5 in 47 cm	18.88 in 48 cm	19.25 in 48.9 cm	19.63 in 49.9 cm	20 in 50.8 cm	20.38 in 51.8 cm

PATTERN PIECES

1. Bodice Bust Front

Cut 2 fabric, 2 lining



2. Midriff Front

Cut 1 fabric on fold,
1 lining on fold

3. Bodice Back

Cut 2 fabric, 2 lining

4. Peplum Front

Cut 1 fabric on fold

5. Peplum Back

Cut 2 fabric

6. Halter Strap Front

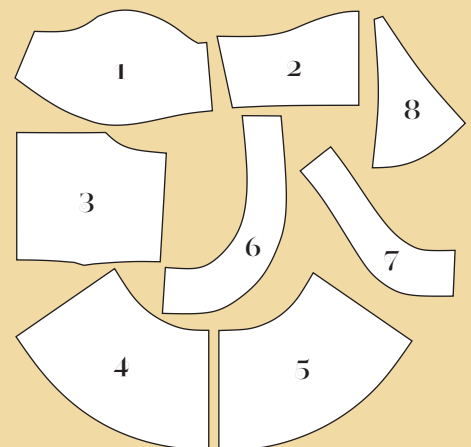
Cut 4 fabric,
2 interfacing

7. Halter Strap Back

Cut 4 fabric,
2 interfacing

8. Collar

Cut 4 fabric,
2 interfacing



REQUIRED YARDAGE & CUTTING LAYOUTS

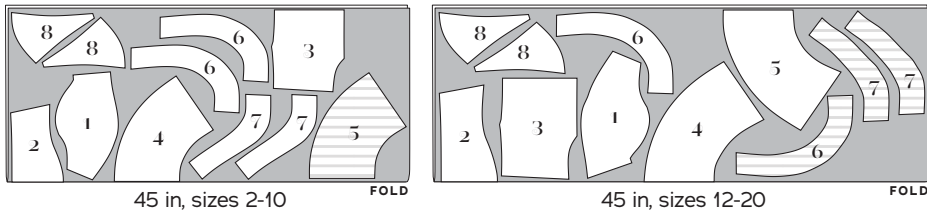
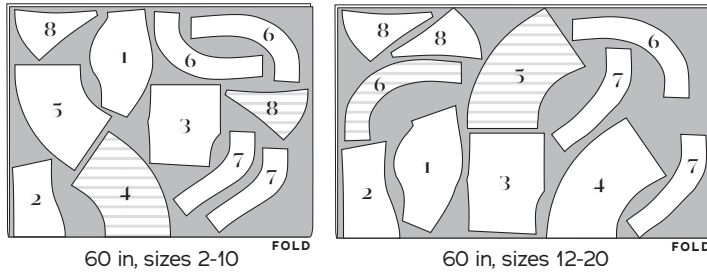
SIZES 2-20

Note: All pattern pieces are shown in a “without nap” layout. You may need additional yardage for directional prints, stripes, plaids, and other prints that need to be matched across seamlines.

Halter with collar and peplum

(1, 2, 3, 4, 5, 6, 7, 8)

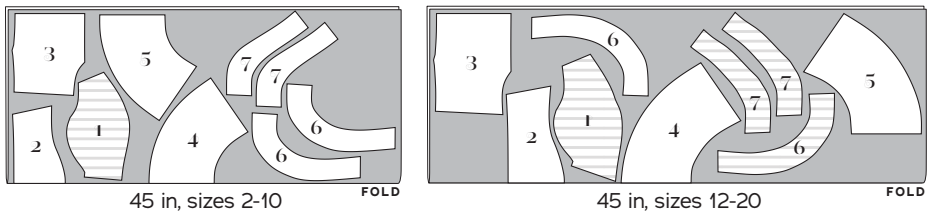
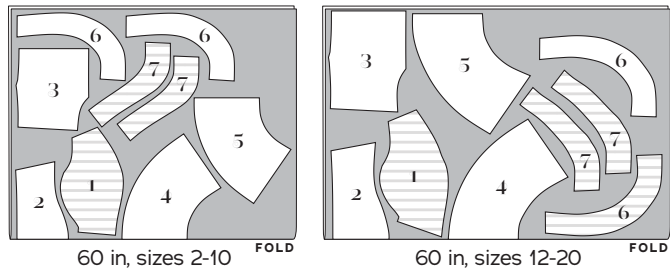
	Sizes 2-10	Sizes 12-20
45 in	1½ yds 1.4 m	1⅞ yds 1.7 m
60 in	1¼ yds 1.1 m	1⅜ yds 1.3 m



Halter with peplum, no collar

(1, 2, 3, 4, 5, 6, 7)

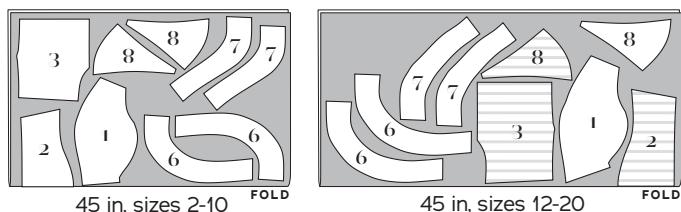
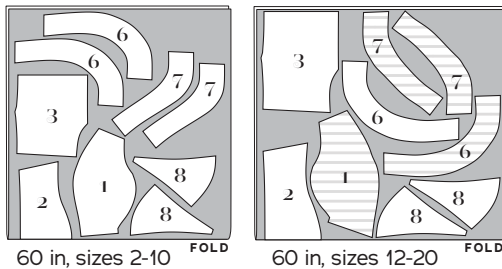
	Sizes 2-10	Sizes 12-20
45 in	1½ yds 1.4 m	1⅞ yds 1.7 m
60 in	1⅞ yds 1 m	1⅜ yds 1.3 m



Halter with collar, no peplum

(1, 2, 3, 6, 7, 8)

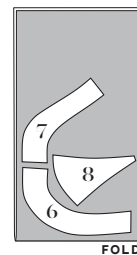
	Sizes 2-10	Sizes 12-20
45 in	1⅞ yds 1 m	1⅜ yds 1.3 m
60 in	⅞ yd .8 m	1 yd .9 m



Interfacing

(6, 7, 8)

	All sizes
60 in	½ yd .5 m



KEY TO LAYOUTS

Right side of pattern piece

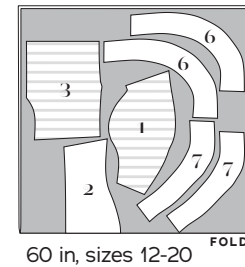
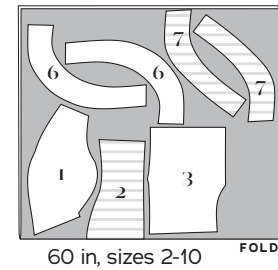
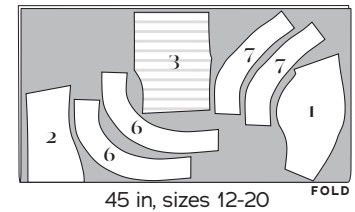
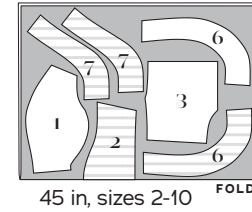
Wrong side of pattern piece

Be sure to note whether the pieces are cut on a double or single layer of fabric. For a double layer, there will be a note indicating FOLD on the layout.

Halter without collar or peplum

(1, 2, 3, 6, 7)

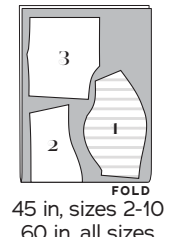
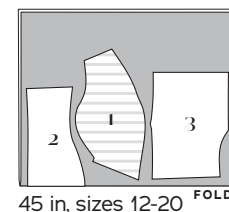
	Sizes 2-10	Sizes 12-20
45 in	⅞ yd .8 m	1¼ yds 1.1 m
60 in	¾ yd .7 m	⅞ yd .8 m



Lining

(1, 2, 3)

	Sizes 2-10	Sizes 12-20
45 in	½ yd .5 m	⅞ yd .8 m
60 in	⅝ yd .6 m	⅝ yd .6 m





REQUIRED YARDAGE & CUTTING LAYOUTS

SIZES 18-34

Note: All pattern pieces are shown in a “without nap” layout. You may need additional yardage for directional prints, stripes, plaids, and other prints that need to be matched across seamlines.

KEY TO LAYOUTS

 Right side of pattern piece

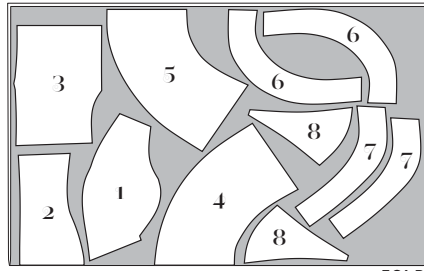
 Wrong side of pattern piece

Be sure to note whether the pieces are cut on a double or single layer of fabric. For a double layer, there will be a note indicating FOLD on the layout.

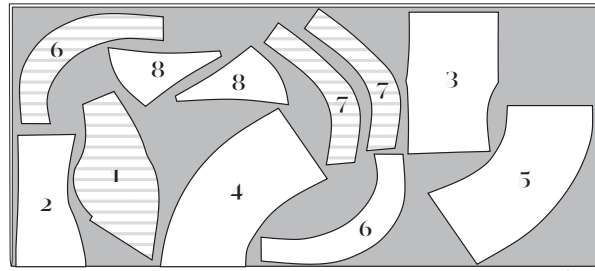
Halter with collar and peplum

(1, 2, 3, 4, 5, 6, 7, 8)

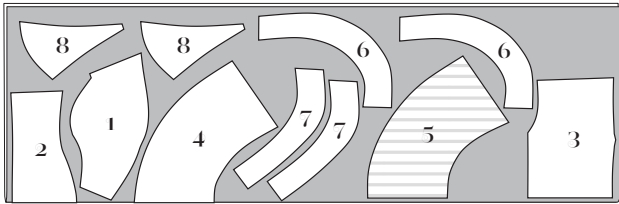
	Sizes 18-24	Sizes 26-34
45 in	2 $\frac{1}{8}$ yds 1.9 m	2 $\frac{1}{2}$ yds 2.3 m
60 in	1 $\frac{3}{8}$ yds 1.3 m	2 yds 1.8 m



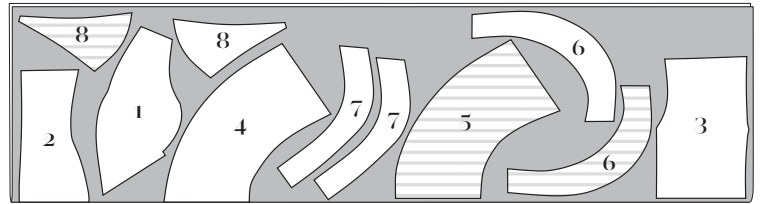
60 in, sizes 18-24



60 in, sizes 26-34



45 in, sizes 18-24

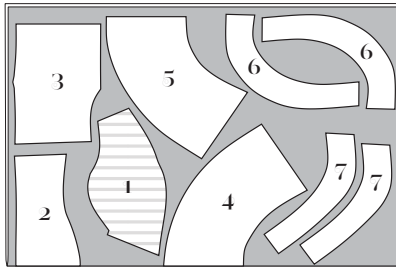


45 in, sizes 26-34

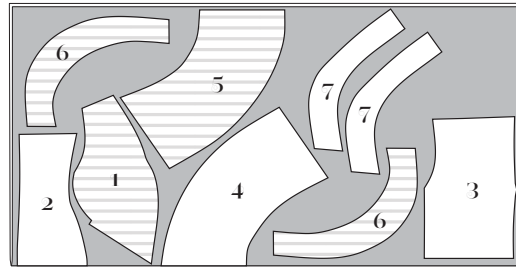
Halter with peplum, no collar

(1, 2, 3, 4, 5, 6, 7)

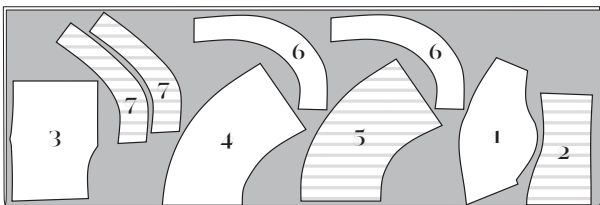
	Sizes 18-24	Sizes 26-34
45 in	2 yds 1.8 m	2 $\frac{3}{8}$ yds 2.2 m
60 in	1 $\frac{3}{8}$ yds 1.3 m	1 $\frac{3}{4}$ yds 1.6 m



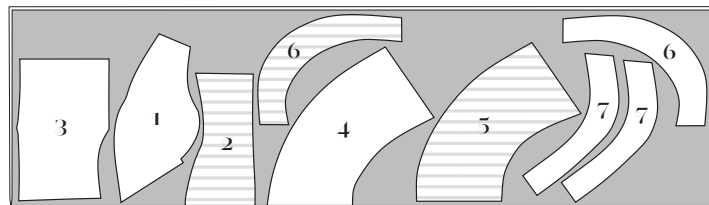
60 in, sizes 18-24



60 in, sizes 26-34



45 in, sizes 18-24

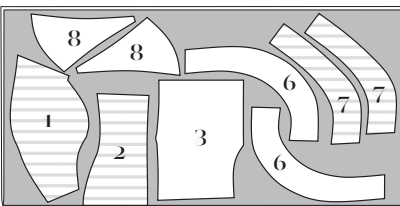


45 in, sizes 26-34

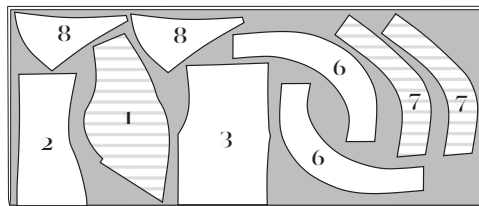
Halter with collar, no peplum

(1, 2, 3, 6, 7, 8)

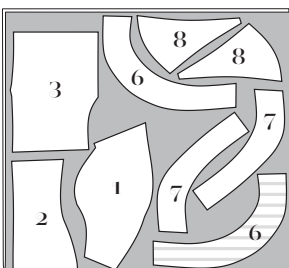
	Sizes 18-24	Sizes 26-34
45 in	1 $\frac{3}{8}$ yds 1.3 m	1 $\frac{5}{8}$ yds 1.5 m
60 in	1 yd .9 m	1 $\frac{1}{8}$ yds 1 m



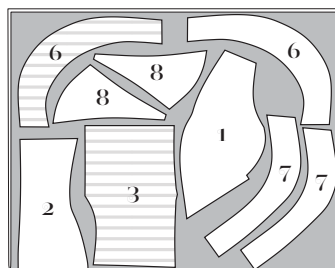
45 in, sizes 18-24



45 in, sizes 26-34



60 in, sizes 18-24

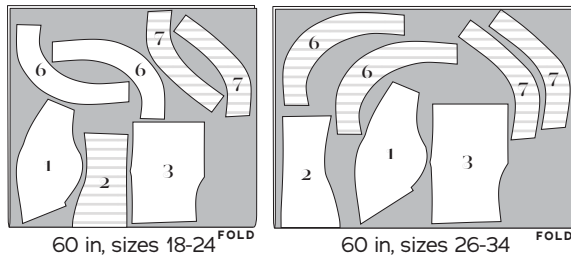


60 in, sizes 26-34

Halter without collar or peplum

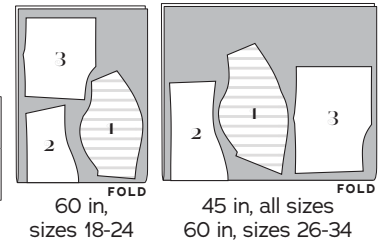
(1, 2, 3, 6, 7)

	Sizes 18-24	Sizes 26-34
45 in	1 ³ / ₈ yds 1.3 m	1 ¹ / ₂ yds 1.4 m
60 in	1 yd .9 m	1 ¹ / ₄ yds 1.1 m



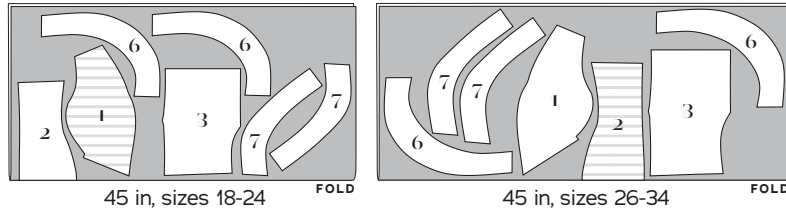
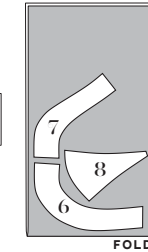
Lining (1, 2, 3)

	Sizes 18-24	Sizes 26-34
45 in	⁷ / ₈ yd .8 m	⁷ / ₈ yd .8 m
60 in	⁵ / ₈ yd .6 m	⁷ / ₈ yd .8 m



Interfacing (6, 7, 8)

	Sizes 18-24	Sizes 26-34
60 in	¹ / ₂ yd .5 m	⁵ / ₈ yd .6 m



SEWING INSTRUCTIONS

BEFORE SEWING

Transferring marks: Use dressmaker's tracing paper and a tracing wheel to transfer all pattern markings to the wrong side (WS) of your fabric. Mark pattern notches by snipping into the seam allowance with the tip of your scissors.

Interfacing: Some of the pattern pieces need to be stabilized with fusible interfacing prior to sewing. Follow the interfacing cutting instructions on the pattern pieces. Apply fusible interfacing to the WS of the fabric, using a press cloth and steam. Do not rub your iron back and forth; lift it up and press it down for several seconds at a time until interfacing is fully adhered.

Seam Finishing: All bodice raw edges are fully enclosed by the lining, so there is no need for seam finishing. If finishing seams with a serger, serge the following seam allowances (without trimming the edges) before construction.

- Sides and hem of Peplum Front and Back

NOTES

- ⁵/₈-in (1.5 cm) seam allowances are included on all pattern pieces, except where otherwise noted.
- If you don't have a serger, consider using a zigzag or overlock stitch on your sewing machine.
- If you find it difficult to see notches after serging, you may wish to mark them with chalk, thread tacks, or another marking tool.

- Press to set your stitching after every step, even when not specifically stated in the instructions. You do not need to press basted or gathered stitches.

TIPS

- Halter styles require close attention to fitting, so be sure to make a muslin of the bodice. Because everyone's neck and shoulder shape is unique, double check the comfort and appearance of the back halter strap. You may need to adjust the back strap's placement at the neck to fit your shoulder shape.
- Consider cutting the collar and/or halter straps in a contrasting fabric to play around with a retro look and to frame your face. Or omit the peplum and attach at the waist to the Loretta Shorts for a fun romper or the Charm Circle Skirt for a swishy halter dress.
- If sewing in pleather, consider removing the hem allowance and leaving the peplum lower edge raw. Use a lower heat on your iron, and use a press cloth when applying interfacing and pressing seams. We also topstitched the pleather collar for a sleeker look.
- If using a stretch fabric, we recommend sizing down or taking in the side seams to get a fitted look. You can also choose a non-stretch lining for stability in the bodice.
- If you need to shorten a separating zipper, you will need to shorten it from the top. Match your zipper length to the finished length of your bodice center back, and mark the correct length with chalk. Using a 1.5-mm-wide zigzag stitch at a length just above zero, sew over the teeth to create a new top zipper stop on each side of the separating zipper. Cut your zipper

5/8 in (1.5 cm) above the new zipper stop. When you sew the zipper into your bodice, make sure to tuck this upper seam allowance in between the lining and bodice fabric. Optionally, you can use pliers to remove the teeth above the newly created zipper stop.

SEW THE TOP

Bodice

1. Gather Bodice Bust Front (1): using a 4-mm- to 5-mm-long straight stitch, sew two lines of gathering stitches within the seam allowance between the notches on each lower edge of bodice bust front. Sew the first line of gathering stitches 1/2 in (1.3 cm) from the raw edge and the second line 1/4 in (6 mm) from the raw edge. Pull up bobbin threads to gather. Gathers will be concentrated between notches.

2. Sew bodice bust center front: pin bodice bust center fronts together, right sides (RS) together, matching notches. Stitch. Press seam allowances open.

3. Sew bodice front: pin bodice bust unit to Midriff Front (2), RS together, matching notches and being careful to align center front seam of bodice bust unit to center front of midriff. (TIP: It can be useful to draw in your seam allowances and put a pin on the midriff piece at center front). Distribute gathers evenly between notches. Stitch. Grade seam allowances. Press seam allowances toward bodice bust unit.

4. Stabilize center back zipper opening: apply 1 1/4-in-wide (3 cm) strips of fusible interfacing to the WS of each Bodice Back (3) piece at center back.

5. Sew darts: on bodice back, match the dart legs, RS together, then stitch from the dart base to the dart point. Backstitch at the beginning but not at the point, leaving a few inches of thread tails at the point. Tie off the tails and trim. Press the darts toward center back.

6. Sew bodice side seams: pin front and back bodice side seams, RS together, matching back notch to front midriff seam. Stitch. Press seam allowances open.

Peplum

1. Assemble peplum: pin Peplum Front (4) and Peplum Back (5) at side seams, RS together and matching notches. Stitch. Press seam allowances open.

2. Sew peplum to bodice: pin bodice to peplum at waistline, RS together, matching side seams and notches. Stitch. Grade seam allowances so the bodice's is narrower and the peplum's is wider. Clip into curves every 1/2 in (1.3 cm) around the curviest part of the waist seam. Press seam allowances toward bodice.

3. Hem peplum: fold and press the peplum lower hem's raw edge under 5/8 in (1.5 cm). Topstitch 1/2 in (1.3 cm) from fold.

Lining

1. Assemble bodice lining: repeat Bodice steps 1 through 6 for the bodice lining. Staystitch the lining waist using a 5/8 in (1.5 cm) seam allowance, clip into waistline curves as needed, and press the lining waist seam allowance to WS, rolling the staystitching just to the WS of the lining.

2. Prepare lining and bodice: pin lining to bodice around neckline, RS together. At zipper opening's top edge, working with bodice back facing up, fold seam allowances as follows: on right half of opening (the underlap), fold both seam allowances to lining WS 1/2 in (1.3 cm). The lining seam allowance is nested inside the outer fabric seam allowance. On opening's left half (the overlap), fold lining seam allowance to WS 7/8 in (2.2 cm). Fold outer fabric seam allowance to WS 5/8 in (1.5 cm). Seam allowances nest together, with lining seam allowance 1/4 in (6 mm) wider. Folding seam allowances this way ensures lining is finished neatly around the lapped zipper. You can see these steps in action in the companion video.

3. Sew lining to bodice upper edge: stitch front neckline, pivoting at center front sweetheart point. Stitch each back neckline. The underarm is left unsewn between the front and back bodice circle marks. Clip to circles as far as possible without cutting through stitching, and leave seam allowances between circles untrimmed. Grade remaining seam allowances so that those on the outer bodice are the widest and those on the lining are narrower. Notch into curves every 1/2 in (1.3 cm) and trim seam allowances from sweetheart point and center back corners.

4. Understitch upper bodice: from RS, with lining opened out from bodice and seam allowances underneath, stitch $\frac{1}{8}$ in (3 mm) from seamline, catching seam allowances in stitching. Turn lining to bodice WS and press upper bodice edge, rolling seamline just to WS. Between circles, press seam allowances flat with WS together. Machine baste seam allowances between circles.

Zipper

Follow the zipper instructions below for a halter top.

For a dress or romper, follow the steps in the Liz, Lamour, Circle Skirt, or Loretta Shorts instructions to attach the skirt (or shorts) of your choice and install the zipper. For extra help, see [the free Lamour Dress class on YouTube](#).

1. Prepare the zipper: trim away the tape above and below the top zipper stop and bottom retainer box/insertion pin.

2. Sew underlap half of zipper: with the bodice RS out and lining opened out of the way, pin closed zipper (face up) under right back folded edge, placing top zipper stop and bottom pin near the upper and lower seam allowances, with zipper teeth just to the left of the fabric fold. Baste. Open zipper. Using a zipper foot, stitch from bottom to top next to zipper teeth, just on the fold.

3. Sew overlap half of zipper: with zipper closed, position left back fabric overlap over zipper teeth so fabric fold just covers stitching on underlap. Pin overlap to zipper tape. Baste. Open zipper completely and topstitch overlap $\frac{3}{8}$ in (1 cm) from fold, closing zipper when you reach the pull; finish stitching to base, stitching as close to bottom retainer box as possible. Pivot the work and stitch across base of zipper.

4. Finish peplum center back: fold and press each peplum center back raw edge under $\frac{5}{8}$ in (1.5 cm) to WS. Topstitch $\frac{1}{2}$ in (1.3 cm) from fold.

5. Finish the lining at the zipper and waistline: pin bodice lining to the waistline seam and WS of zipper tape, leaving teeth free. Slipstitch by hand.

Halter Strap

1. Assemble halter straps: pin interfaced Halter Strap Front (6) to interfaced Halter Strap Back (7) at short bottom ends, RS together, matching notches. Stitch. Press seam allowances open. Repeat for uninterfaced pieces.

2. Prepare halter straps: staystitch each halter strap unit outer curve, $\frac{5}{8}$ in (1.5 cm) from raw edge. Notch every $\frac{1}{2}$ -1 in (1.3 cm) around outer curve. Press $\frac{5}{8}$ in to WS along the entire outer curve.

3. Sew inner curve: pin interfaced halter strap unit to uninterfaced halter strap unit, RS together. Starting at back halter strap inner corner, stitch the straps together along the inner curve. Stop at front's lower circle mark and restart stitching at top circle mark, pivoting at front halter strap inner corner to stitch along short end of strap. The front strap's inner curve remains open between circle markings. Trim seam allowances and front inner corner, and clip every $\frac{1}{2}$ in (1.3 cm) along inner curve. Turn RS out and press.

Proceed to next section for Collar, otherwise continue to Attach Halter Strap to Bodice.

Collar (optional)

1. Construct Collar (8) pieces: apply fusible interfacing to WS of one set of collar pieces. Pin each interfaced collar piece to an uninterfaced collar piece, RS together. Stitch along two unnotched sides of collar, leaving notched edge open, pivoting at the corner. Trim points close to stitching and grade seam allowances so the interfaced seam allowance is slightly wider than the uninterfaced seam allowance. Turn collar RS out, making sure corners are crisp by using a knitting needle or pin to gently poke or pull them out. Press flat and baste raw edges together. Optional: edgestitch closed sides of collar, if desired.

2. Attach collar to halter strap: sandwich and pin one collar inside the halter strap front piece along the outer curve, with the upper point of the collar at the halter strap front outer corner, and the lower end of the collar at the halter strap's circle marking, and matching notches. Hand baste all layers with a long running stitch at $\frac{1}{2}$ in (1.3 cm).

Attach Halter Strap to Bodice

1. Sew halter straps to bodice: sandwich and pin unsewn underarm section of bodice between the strap layers, matching circles. Pin the remaining unsewn outer curved edge of the halter strap, WS together. If you are attaching the collar, the bottom of the collar will line up immediately next to the bodice front. Edgestitch entire outer curve of the halter strap unit, $\frac{1}{8}$ in (3 mm) from the edge.

2. Place halter back into halter front: slip the short end of the halter strap back into the inner curve opening in the halter strap front at neck and pin. With the top on, adjust the strap length as needed.

3. Edgestitch inner curve: edgestitch the short end of the top strap and entire inner curve of the halter strap $\frac{1}{8}$ in (3 mm) from edge, being sure to sandwich the halter strap back piece into place. Press.

4. Add neck closure: sew two hook-and-bar closures to the halter neck back, in a position that is comfortable for you. Sew hooks to WS of right halter strap (as worn), and bars to the RS of left halter strap (as worn).

5. Finish collar (optional): with top on, adjust collar to suit and pin. Sew a hidden swing tack at mark from the WS of the collar to the RS of the front halter strap to hold it into place.

Enjoy your swanky new Las Vegas Halter Top!

PATTERN PIECE LOCATION GUIDE

Here is a list to help you locate the pattern pieces on the letter-size tiled pages and A0 pattern sheets. The tiled pieces and A0 sheets are included as separate pdf files as part of this digital pattern.

SIZES 2-20

PC#	Piece Name	Tiled	A0
1	Bodice Bust Front, A cup	8-10	1
1	Bodice Bust Front, B/C cup	10-12	1
1	Bodice Bust Front, D/DD cup	12-14	1
1	Bodice Bust Front, F/G cup	15-17	1
1	Bodice Bust Front, H cup	17-19	1
2	Midriff Front	1-2	1
3	Bodice Back	22-23, 28-29	2
4	Peplum Front	24-25, 30-31	2
5	Peplum Back	26-27, 32-33	2
6	Halter Strap Front	3-5	2
7	Halter Strap Back	5-7	2
8	Collar	20-21	2

SIZES 18-34

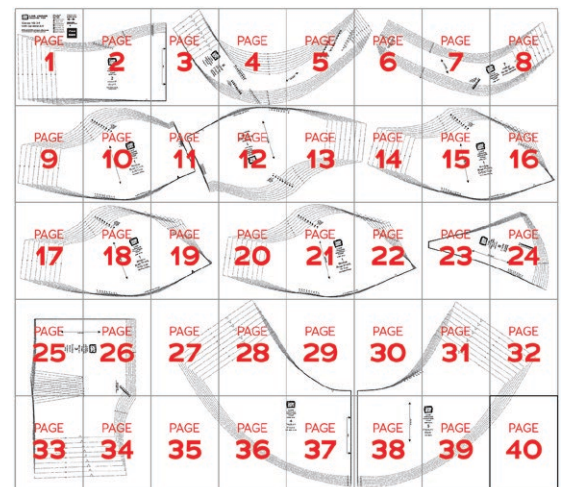
PC#	Piece Name	Tiled	A0
1	Bodice Bust Front, A/B cup	9-11	1
1	Bodice Bust Front, C cup	11-14	1
1	Bodice Bust Front, D/DD cup	14-16	1
1	Bodice Bust Front, F/G cup	17-19	1
1	Bodice Bust Front, H cup	20-22	1
2	Midriff Front	1-3	1
3	Bodice Back	25-26, 33-34	2
4	Peplum Front	27-29, 35-37	2
5	Peplum Back	30-32, 38-40	2
6	Halter Strap Front	3-6	2
7	Halter Strap Back	6-8	2
8	Collar	23-24	1

TILING MAPS

SIZES 2-20



SIZES 18-34



HOW TO USE THIS PATTERN

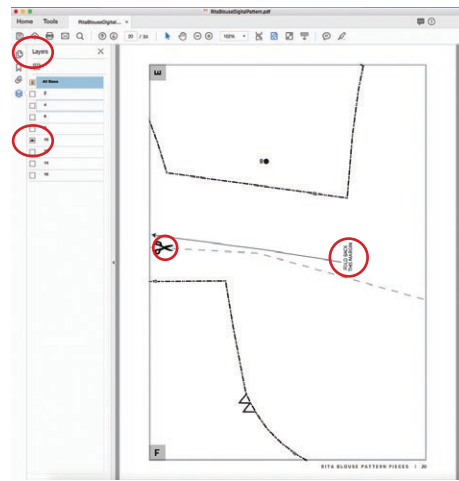
The pattern pieces are tiled so you can print them on Letter (8 1/2" x 11") or A4 size paper. You can also send the A0 pattern sheet PDF to a local or online printer (like www.pdfplotting.com) to print on large sheets (36" x 48" for U.S. or A0 for international).

This pattern includes size layers. To get the best results, open either the Tiled or A0 pattern pieces PDF in Acrobat Reader.

Open the Layers Palette (View> Show/Hide>Navigation Panes>Layers) and hide all of the layer(s) except for the ones you want to print by clicking

on the eye icon.

The All Sizes layer has general pattern information and will always print.



WORKING WITH THE TILED PIECES

Go to File>Print and change the page range to the pages you need for the pieces you've chosen (see Pattern Pieces Printing Index). Make sure the Page Sizing settings to 100% or Actual Size. Test this after printing by measuring the 1" test box on the first page of the bodice pattern pieces.

Cut apart any pattern pieces that share a page by cutting on the gray long dashed lines. Then fold back the page margins on each page as directed.

Tape the pages together, butting up the folded page edges with the gray margin lines, matching up the letters in gray boxes.

MORE FROM GERTIE

On Instagram: Stay in the loop and get inspired.

On YouTube: Learn beginner and advanced sewing skills and techniques through my tutorials, watch episodes of my Gertie's World series, and join regular live streams.

On Patreon: Access monthly patterns and tutorial videos.

At CharmPatterns.com: Shop my sewing patterns and accessories.

