

TRADING POST



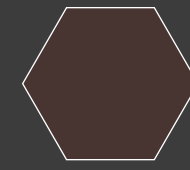
In this tutorial we'll be painting the tile we built in part 1 of this series.

When I decided to build a whole board, I wanted to find a way to paint it relatively quick but still to a level that would make me happy. Here is what I came up with.

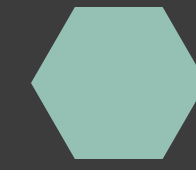
For colors, I am going for a pretty dirty looking beige for the sand/ash to create a unfriendly, slightly toxic looking ground. This is achieved by using beige and brown tones that have a slight green tint.

I am using an airbrush for this one, but you can achieve great results with a brush by wet blending the different ground tones and drybrushing afterwards.

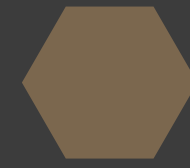
Have fun painting!



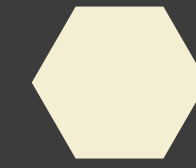
VALLEJO PANZER SERIES
GER. C. BLACK BROWN



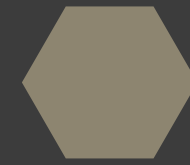
VALLEJO MODEL COLOR
LIGHT BLUE GREEN



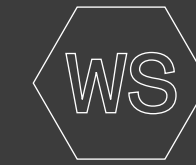
VALLEJO MODEL COLOR
US FIELD DRAB



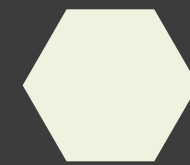
AMMO MIG ENAMEL
DRY EARTH



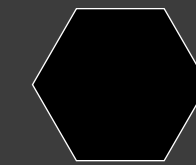
VALLEJO MODEL COLOR
GER. C. BEIGE WWII



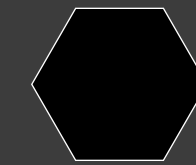
WS
WINSOR & NEWTON
WHITE SPIRITS



VALLEJO MODEL COLOR
DECK TAN



VALLEJO
SURFACE PRIMER BLACK



GESSO PRIMER
BLACK

COLORS

↘
DRYBRUSH
GREEN STUFF WORLD
SIZE 6

↘
SMALLER BRUSH
WHATEVER YOU HAVE
SIZE 1 - 2

↘
BIG FLAT BRUSH
WHATEVER YOU HAVE
FOR THE TILE RIM

↘
AIR BRUSH

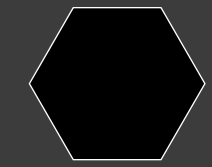
↘
BASECOAT MIX
WATER 50/50 PAINT

↘
LAYER MIX
WATER 60/40 PAINT

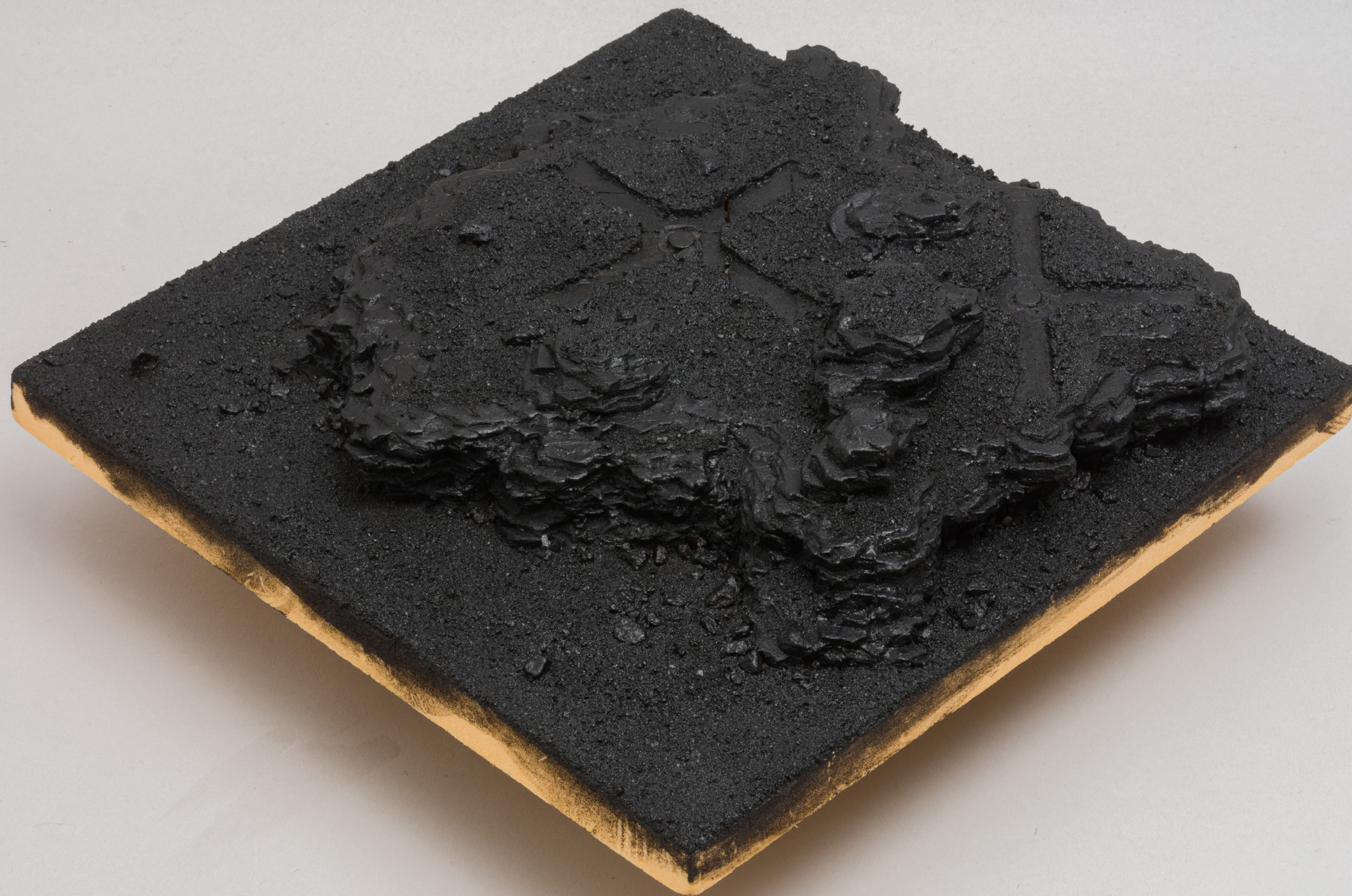
↘
GLAZE MIX
WATER 80/20 PAINT

BRUSHES & TOOLS

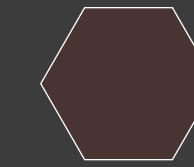
PAINT MIXES



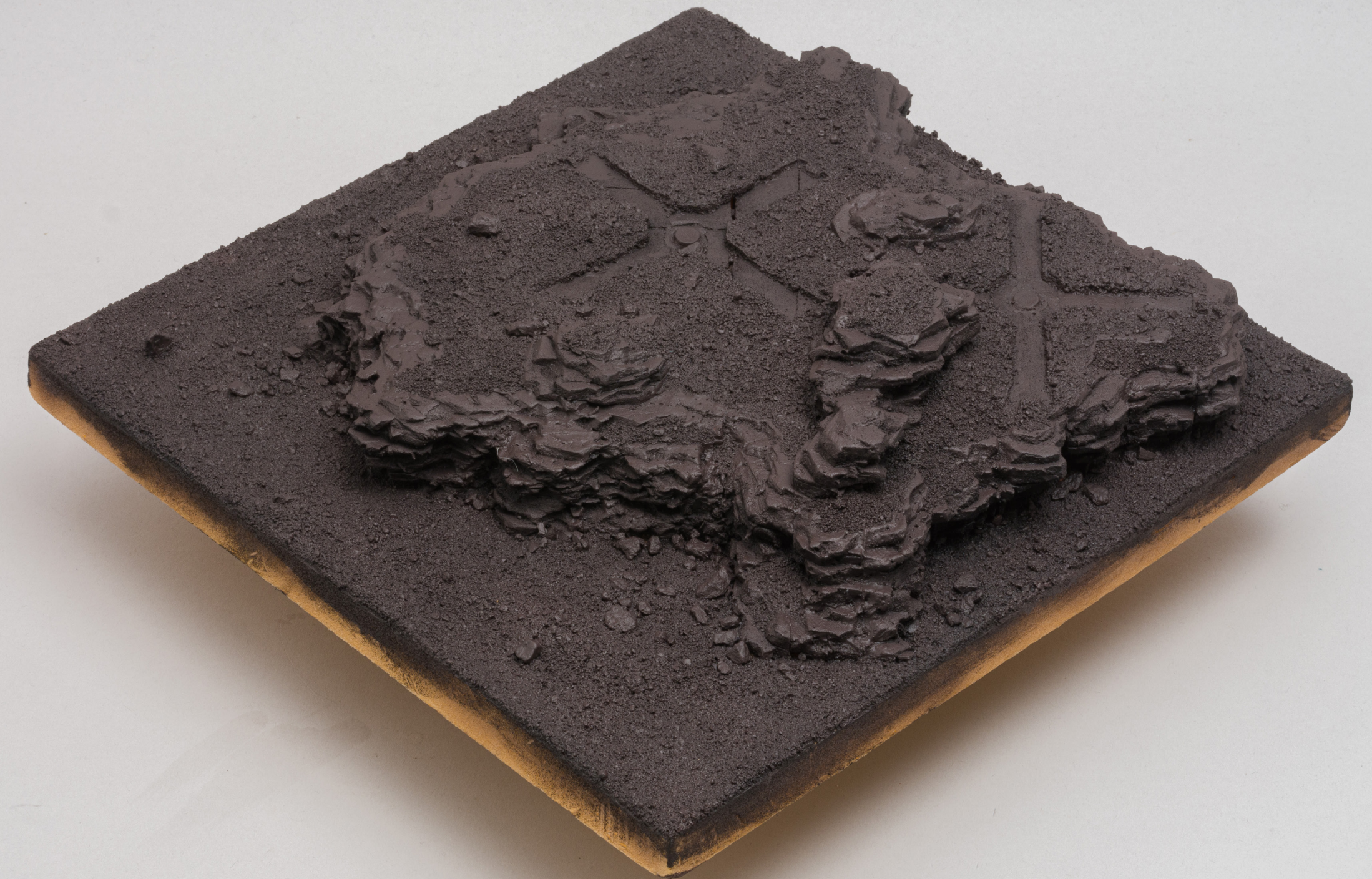
VALLEJO SURFACE PRIMER BLACK



Prime the whole tile black. I used a big brush and diluted the vallejo surface primer with a little bit of water so it runs better in all the recesses.
WARNING! DON'T USE PRIMER FROM A RATTLE CAN!
The solvents in the can will eat the foam and destroy the tile.



VALLEJO PANZER SERIES GER. C. BLACK BROWN



Apply Ger. C. Black Brown with the airbrush from the top leaving the deepest shadows of the rocks black.
I'm mixing the paint with water to a milky consistency spraying with 30 PSI.
You might need two thin layers for good coverage.

VALLEJO MODEL COLOR
GER. C. BEIGE WWII



Apply Ger. C. Beige WWII with the airbrush again like a zenithal highlight from above leaving the the rocks and bigger stones brown. A little overspray is welcome here, since it gives everything a dusty look. By spraying from above, we are creating some fake shadows in the sand and rocks where the brown shines through.

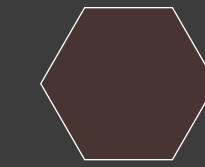
VALLEJO MODEL COLOR
US FIELD DRAB



Spray on a few spots with Us Field Drab, to give the ground some variation in tones.



GER. C. BEIGE WWII
+ DECK TAN

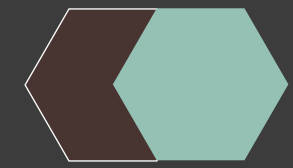


VALLEJO PANZER SERIES
GER. C. BLACK BROWN

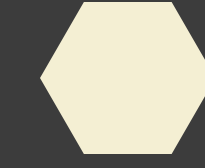


Mix 50/50 and spray in a few, raised areas for some highlights.
If you would like some more definition in the sand, I would recommend to apply a dark brown oil wash like "Shadow Brown" from Abteilung 502.
But since I'm going for a dust covered look here, I'm fine with not having too many details on the ground texture.

Use a brush and pick out a few rocks all over the tile with Ger. C. Black Brown.



GER. C. BLACK BROWN
+ LIGHT BLUE GREEN

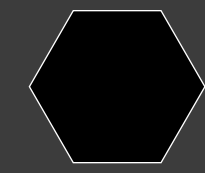


AMMO MIG ENAMEL
DRY EARTH



Mix 50/50 and do a quick drybrush of all the rocks to fuse everything together.

Mix 50/50 with White Spirits and add a few spots of Dry Earth for some dust or very fine ash/sand. Focus on adding a few larger spots instead of many small ones. Be careful here, since the white spirits can also eat away the foam. That's why we covered everything with Gesso in the building step to be safe.



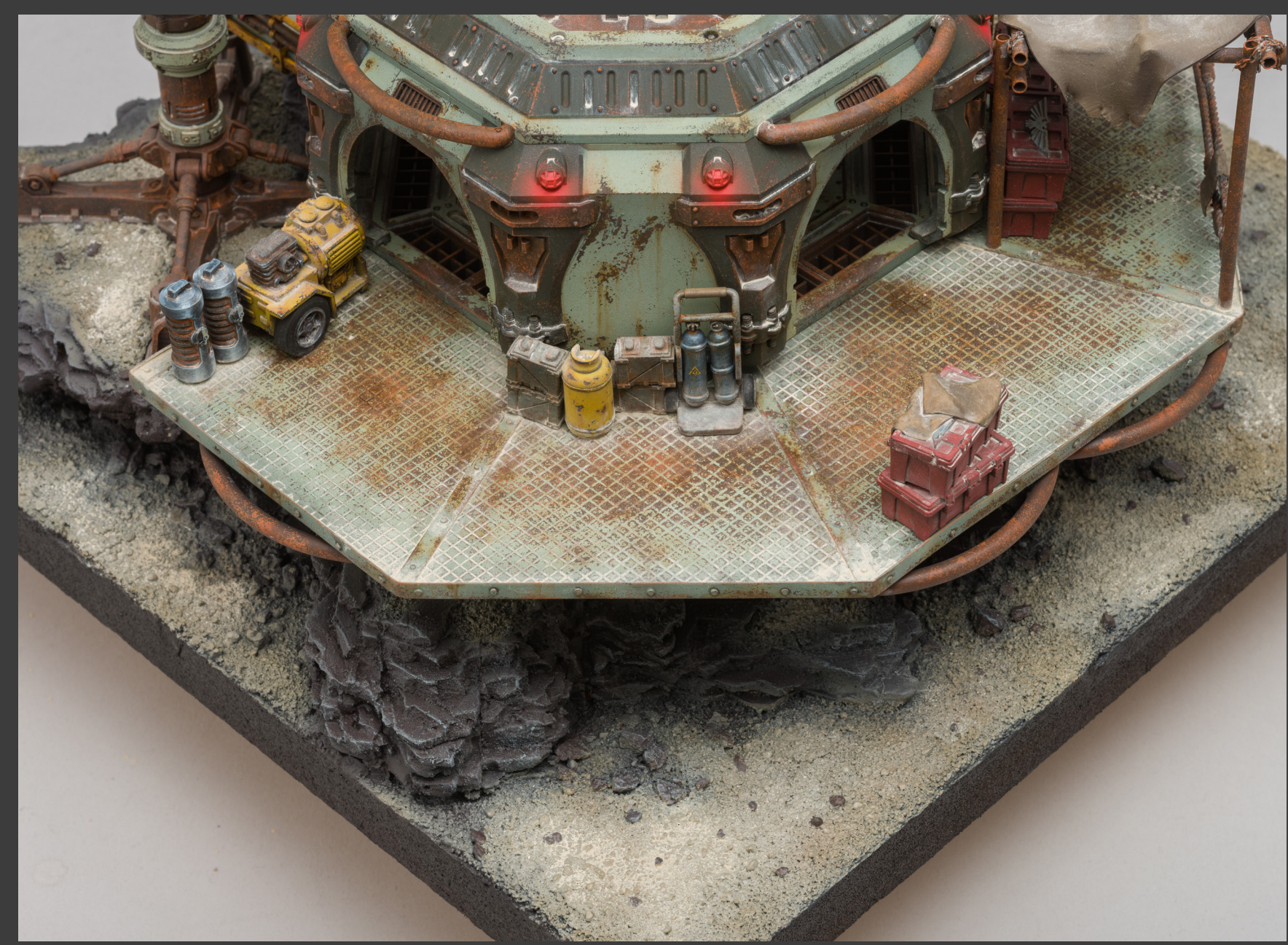
GESSO PRIMER BLACK



Paint the tile rim with black Gesso (or primer) and you are done :-)



The tile with buildings in place.



Some details

THIS IS THE END.
I HOPE YOU FIND THIS
TUTORIAL HELPFUL.
HAPPY BUILDING!